

N 1,616,000
E 669,000

N 1,616,000

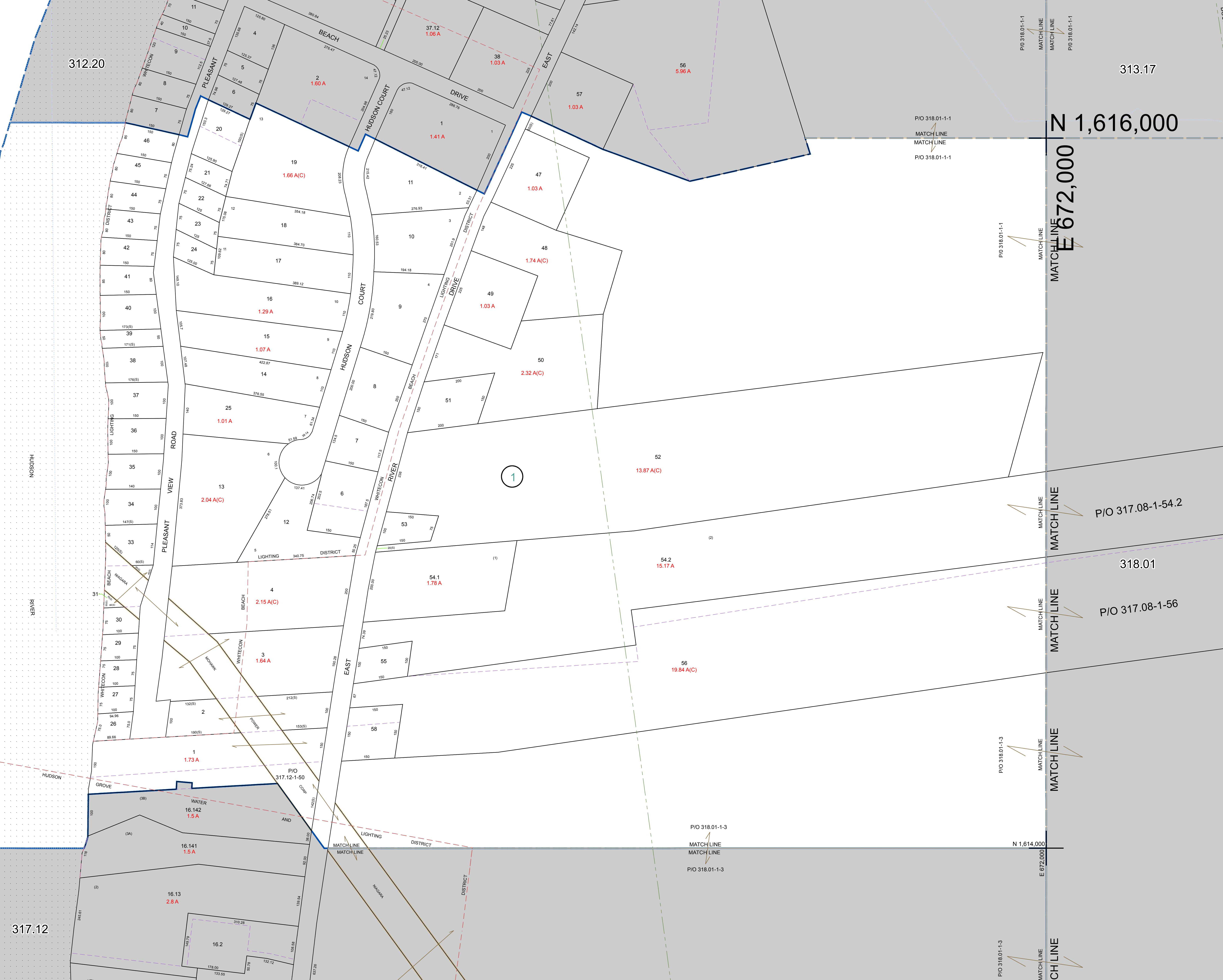
E 672,000

TOWN OF CORINTH

SARATOGA COUNTY

N 1,614,000
E 669,000

N 1,614,000
E 672,000



WARREN COUNTY REAL PROPERTY SERVICES
LAKE GEORGE, NEW YORK

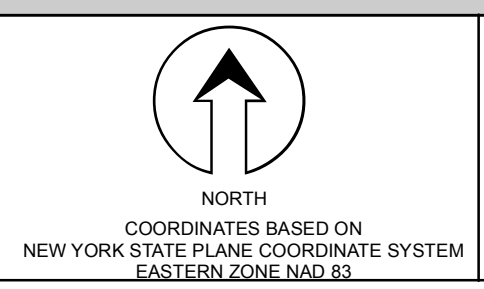
PREPARED BY:

DATE	MADE BY	CHANGES OR ADDITIONS
7/22/2008	R. DIXON	PARCEL 317.08-1-54 ONLY (BY SUB. MAP FOR PROVISION) NOW 317.08-1-54.1 PARCEL 317.08-1-54.2 CREATED
7/22/2008	R. DIXON	PARCELS 317.08-1-54 AND 317.08-1-56 REVISED BY BOUNDARY LINE AGREEMENT DEED BOOK 3555 PAGE 92

SPECIAL DISTRICTS
PROPERTY LINE
ORIGINAL LOT LINE
RAILROAD
STREAM OR DITCH
ROAD OR RAILWAY BNDY
COUNTY LINE

LEGEND
TOWN LINE
VILLAGE LINE
BLOCK LIMIT
GREAT LOT LINE
SCHOOL DISTRICT LINE
FIRE DISTRICT LINE
DENOTES COMMON OWNER
TAX MAP BLOCK NUMBER
TAX MAP PARCEL NUMBER
FILED PLAN LOT NUMBER

TAX MAP
GREAT LOT NUMBER
CALCULATED ACREAGE
DEED ACREAGE
GREAT LOT LINE
SCHOOL DISTRICT LINE
DEED DIMENSION



SHEET INDEX
317.08
317.17
318.01
317.12
318.01

TAX MAP
TOWN OF LAKE LUZERNE
WARREN COUNTY, NEW YORK

317.08

SCALE: 1 inch = 100 feet

DATE PRINTED: Apr 11, 2011

THIS DOCUMENT PREPARED FOR TAX PURPOSES ONLY