

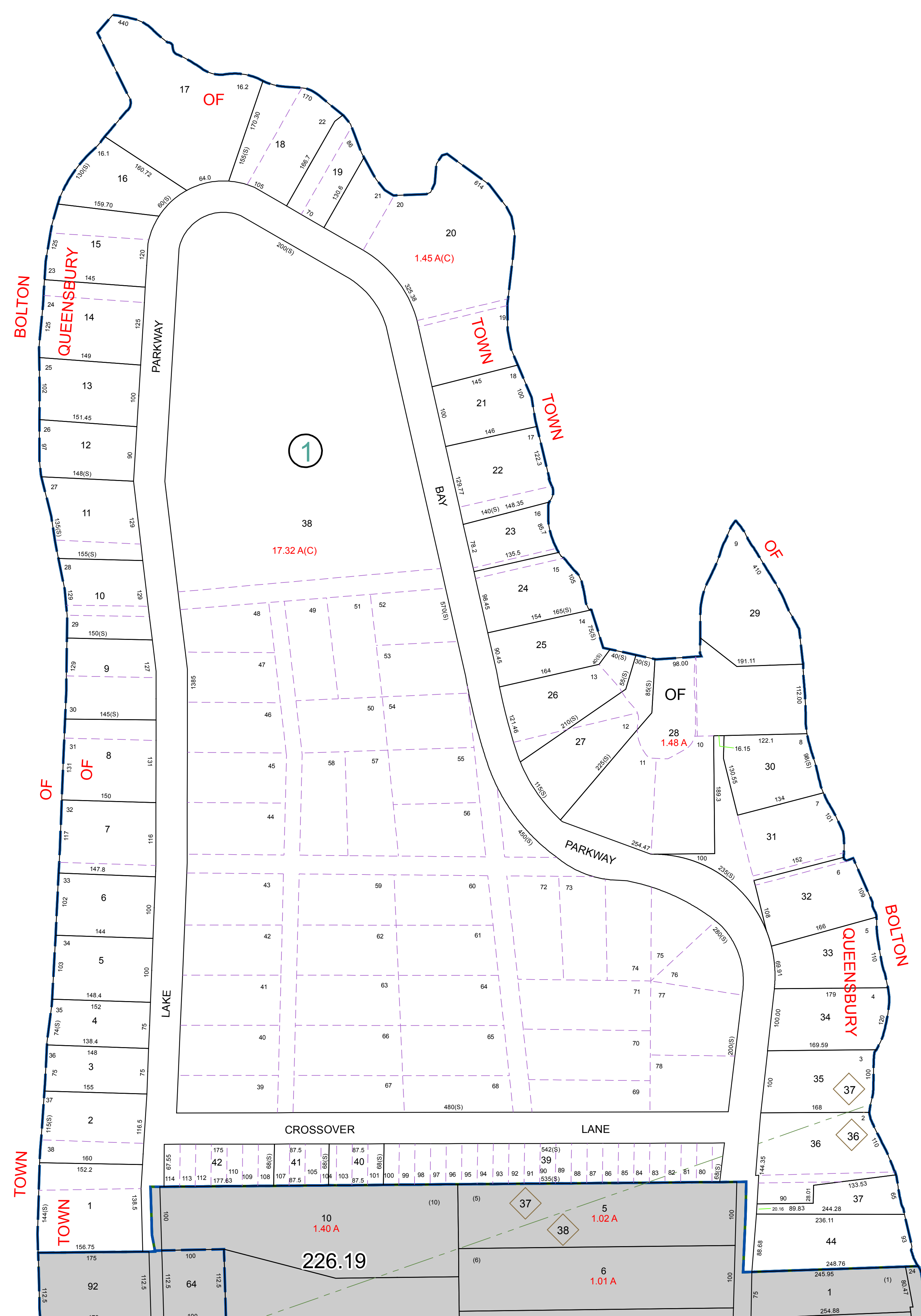
N 1,692,000
E 714,000

N 1,692,000
E 717,000

LAKE

N 1,690,000
E 714,000

N 1,690,000
E 717,000



WARREN COUNTY REAL PROPERTY SERVICES
LAKE GEORGE, NEW YORK

REVISION TABLE		
DATE	MADE BY	CHANGES OR ADDITIONS
10/21/2009	P. DIXON	PARCEL 226.19-1-11 CHANGED TO PARCEL 226.19-1-14
8/24/2009	P. DIXON	226.19-1-4 MERGED INTO 226.19-1-11. BY ORDER REQUEST DATED 7/14/09 AND DELETED FROM TAX MAP.
8/2/2009	P. DIXON	PARCEL 226.19-1-11 REVISION BY DEED BOOK 3071 PAGE 240

SPECIAL DISTRICTS	
PROPERTY LINE	---
ORIGINAL LOT LINE	---
RAILROAD	---
STREAM OR DITCH	---
ROAD OR RAILWAY BNDY	---
COUNTY LINE	---

LEGEND	
TOWN LINE	---
VILLAGE LINE	---
BLOCK LIMIT	---
GREAT LOT LINE	---
SCHOOL DISTRICT LINE	---
FIRE DISTRICT LINE	---
DENOTES COMMON OWNER	---
TAX MAP BLOCK NUMBER	---
TAX MAP PARCEL NUMBER	---
FILED PLAN LOT NUMBER	---

GREAT LOT NUMBER	1
CALCULATED ACREAGE	76.00-1.11
DEED ACREAGE	(14)
SCALED DIMENSION	76.00-1.11
DEED DIMENSION	(14)

NORTH
COORDINATES BASED ON
NEW YORK STATE PLANE COORDINATE SYSTEM
EASTERN ZONE NAD 83

SHEET INDEX	
226.12	226.13
226.14	226.15
226.16	226.17

TAX MAP
WARREN COUNTY, NEW YORK