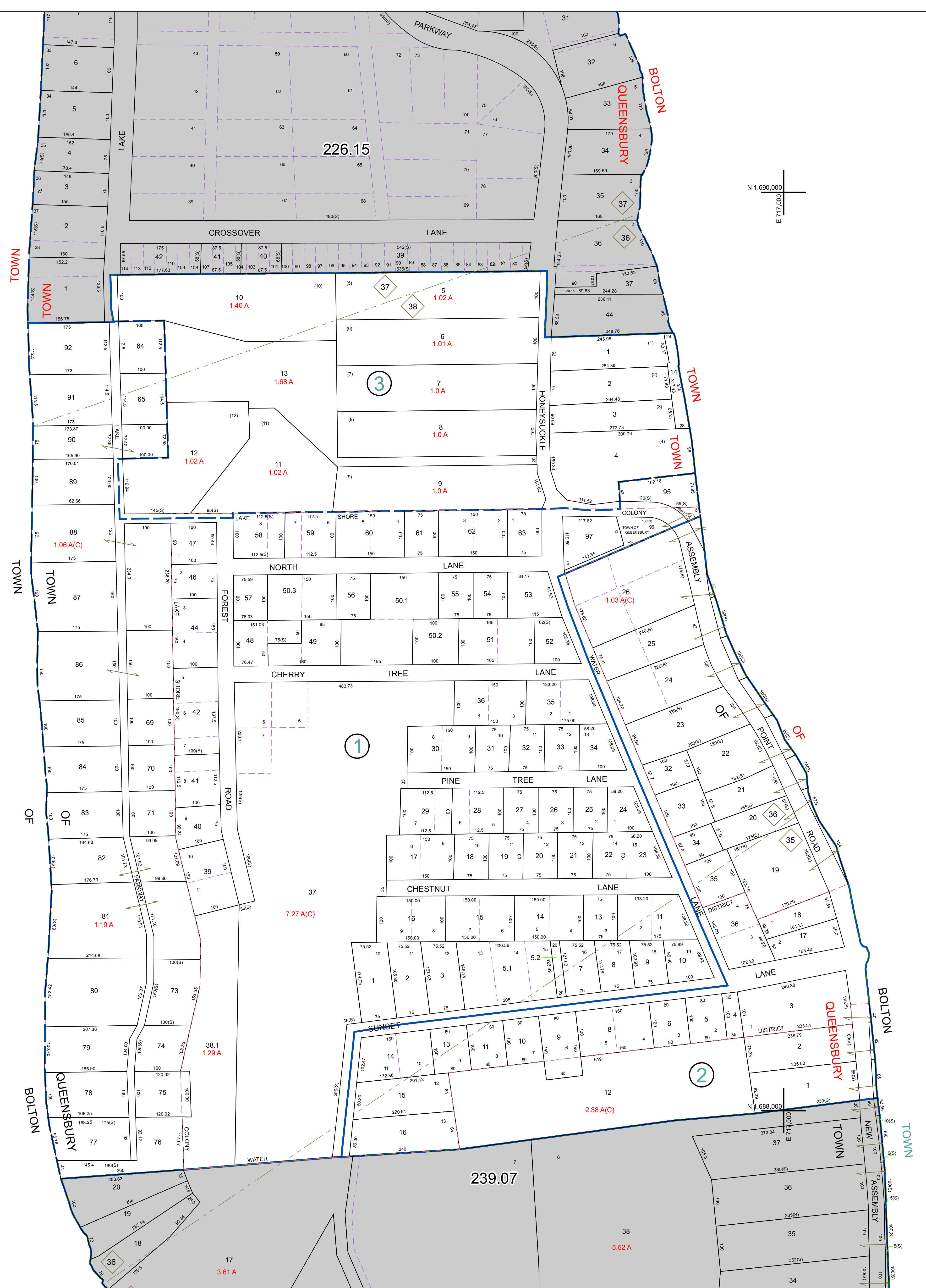


N 1,690,000
E 714,000

N 1,690,000
E 717,000

N 1,688,000
E 714,000



TOWN OF BOLTON

TOWN

TOWN

OF

BOLTON

BOLTON

QUEENSBURY

TOWN

TOWN

ASSEMBLY

OF


POINT

ROAD

BOLTON

TOWN

ASSEMBLY

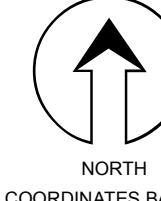

WARREN COUNTY REAL PROPERTY SERVICES
 LAKE GEORGE, NEW YORK
 PREPARED BY:

REVISION TABLE		
DATE	MADE BY	CHANGES OR ADDITIONS
1/27/2010	B. DIXON	226.15-1-12 DELETED INTO 226.19-1-17. (BY OWNER REQUEST DATED 1/27/10) AND DELETED FROM TAX MAP.
2/27/2010	B. DIXON	PARCELS 226.19-1-18 BLT OF DEED BOOK 397 PAGE 288 NOW 226.19-1-18-1 PARCELS 226.19-1-18-2 CREATED.
10/1/2009	B. DIXON	226.19-1-84 SP12 (BLENDED PARK SUBDIVISION) NOW 226.19-1-84 PARCELS 226.19-1-84-1 THROUGH 14 CREATED.
10/1/2009	B. DIXON	PARCELS 226.19-1-14 DELETED BY DEED BOOK 342 PAGE 44.
9/9/2008	B. DIXON	PARCELS 226.19-1-19 REVISED BY DEED BOOK 342 PAGE 129.
9/9/2008	B. DIXON	PARCELS 226.19-1-14 REVISED BY DEED BOOK 342 PAGE 129.
9/9/2008	B. DIXON	PARCELS 226.19-1-73 REVISED BY DEED BOOK 342 PAGE 134.
9/16/2008	B. DIXON	226.19-1-48 REVISED INTO 226.19-1-48-1 BY OWNER REQUEST DATED 7/23/08 AND DELETED FROM TAX MAP.

SPECIAL DISTRICTS	
PROPERTY LINE	--- (Dashed line)
ORIGINAL LOT LINE	- - - - (Long dashed line)
RAILROAD	==== (Solid line with cross-ticks)
STREAM OR DITCH	~~~~ (Wavy line)
ROAD OR RAILWAY BNDY	== (Double solid line)
COUNTY LINE	--- (Dotted line)

LEGEND	
TOWN LINE	--- (Dashed line)
VILLAGE LINE	- - - - (Long dashed line)
BLOCK LIMIT	==== (Solid line)
GREAT LOT NUMBER	76.00-1-11
DEED ACRESAGE	(14)
DEED DIMENSION	76.00
DEED DIMENSION	173.2

LEGEND	
FIRE DISTRICT LINE	--- (Dashed line)
DENOTES COMMON OWNER	--- (Dashed line)
TAX MAP BLOCK NUMBER	76.00-1-11
TAX MAP PARCEL NUMBER	(14)
FILED PLAN LOT NUMBER	(14)


 NORTH
 COORDINATES BASED ON
 NEW YORK STATE PLANE COORDINATE SYSTEM
 EASTERN ZONE NAD 83

TAX MAP
TOWN OF QUEENSBURY
 WARREN COUNTY, NEW YORK
 SCALE: 1 inch = 100 feet
 SHEET INDEX