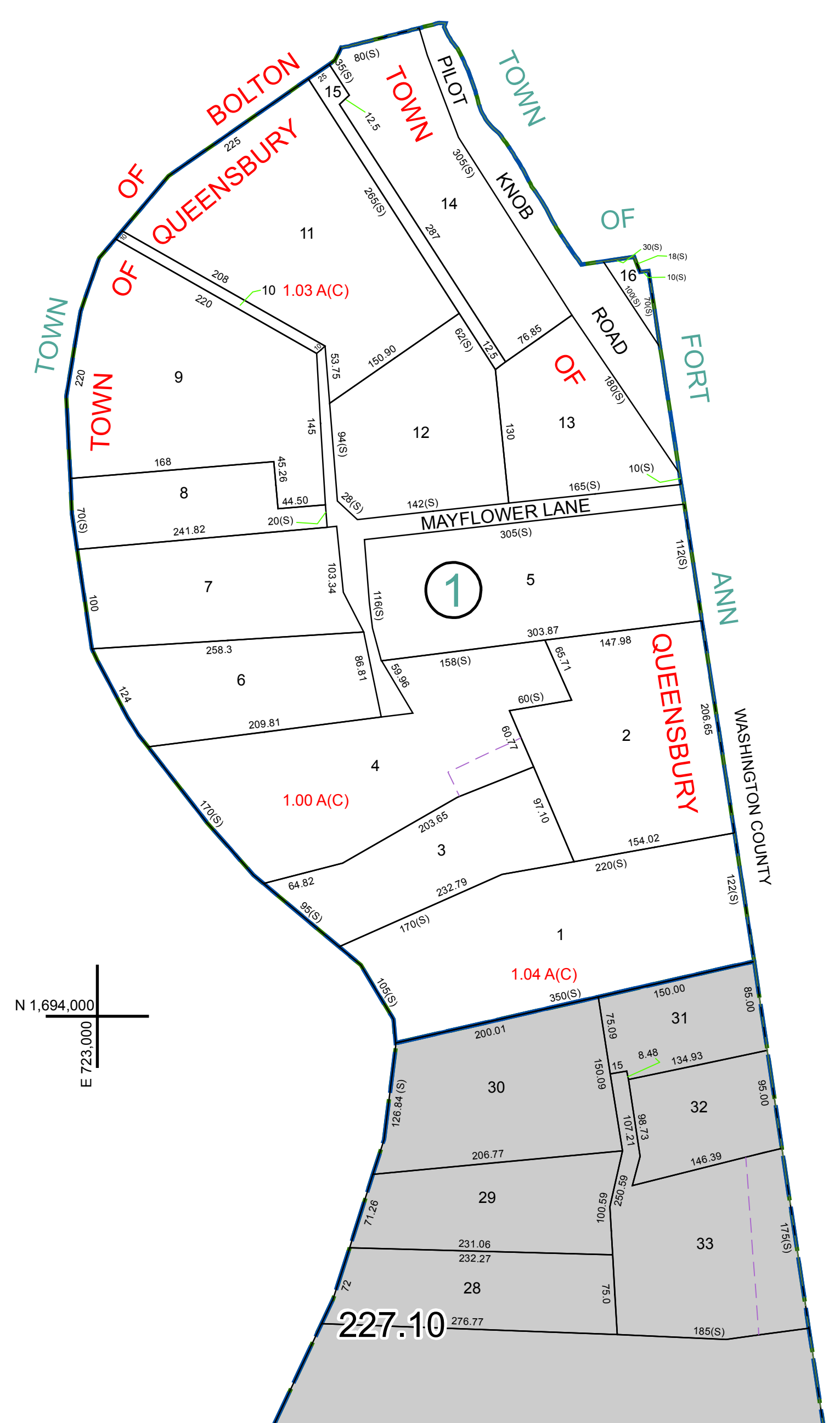



N 1,696,000  
E 723,000

N 1,696,000  
E 726,000



N 1,694,000  
E 723,000

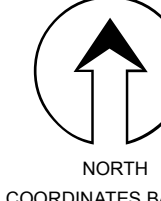
N 1,694,000  
E 726,000


 PREPARED BY:  
**WARREN COUNTY REAL PROPERTY SERVICES**  
 LAKE GEORGE, NEW YORK

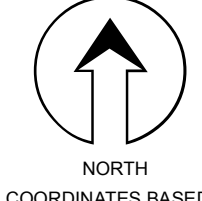
REVISION TABLE			
DATE	MADE BY	CHANGES OR ADDITIONS	

SPECIAL DISTRICTS	

LEGEND	
PROPERTY LINE	—
ORIGINAL LOT LINE	- - - - -
RAILROAD	—+—+—+—
STREAM OR DITCH	~~~~~
ROAD OR RAILWAY BNDY	—+—+—+—
COUNTY LINE	—+—+—+—
TOWN LINE	—+—+—+—
VILLAGE LINE	—+—+—+—
BLOCK LIMIT	—+—+—+—
GREAT LOT LINE	—+—+—+—
SCHOOL DISTRICT LINE	—+—+—+—
FIRE DISTRICT LINE	—+—+—+—
DENOTES COMMON OWNER	—+—+—+—
TAX MAP BLOCK NUMBER	7
TAX MAP PARCEL NUMBER	76.00-1-11
FILED PLAN LOT NUMBER	(14)
GREAT LOT NUMBER	76 (C)
CALCULATED ACREAGE	178 A
DEED ACREAGE	228 (B)
SCALED DIMENSION	173.2
DEED DIMENSION	173.2


 NORTH  
 COORDINATES BASED ON  
 NEW YORK STATE PLANE COORDINATE SYSTEM  
 EASTERN ZONE NAD 83

SHEET INDEX	
227-09	227-10

TAX MAP  
**TOWN OF QUEENSBURY**  
 WARREN COUNTY, NEW YORK  

 SCALE: 1 inch = 100 feet

THIS DOCUMENT PREPARED FOR TAX PURPOSES ONLY