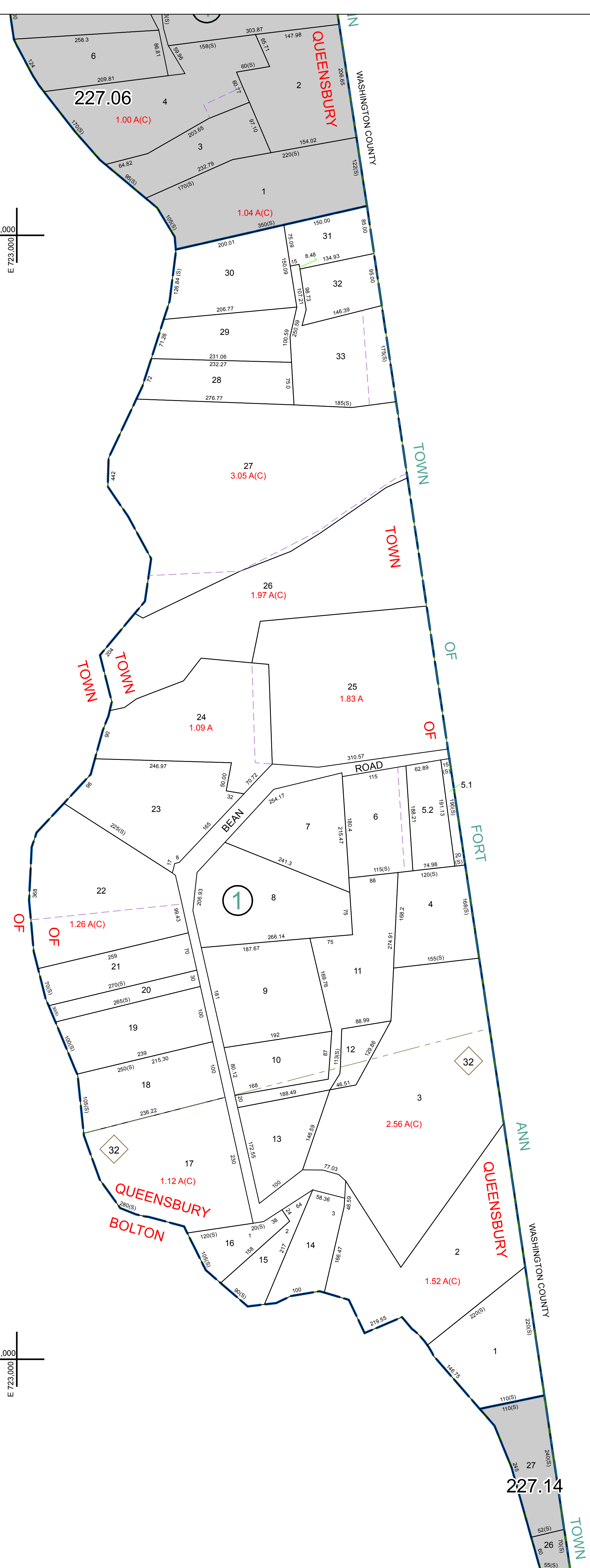


N 1,694,000  
E 723,000

N 1,694,000  
E 726,000

N 1,692,000  
E 723,000

N 1,692,000  
E 726,000



PREPARED BY:  
**WARREN COUNTY REAL PROPERTY SERVICES**  
LAKE GEORGE, NEW YORK

REVISION TABLE		
DATE	MADE BY	CHANGES OR ADDITIONS
12/15/2010	R. SIZON	PARCEL 227.14-1-11 REVISOR BY A RECENTLY FILED SURVEY FOR JENNIFER M. WANDLER.
7/15/2008	R. SIZON	PARCELS 227.10-1-27 AND 227.10-1-33 REVISED BY BOUNDARY LINE AGREEMENT (BOOK 3500 PAGE 54)
7/15/2008	R. SIZON	PARCELS 227.10-1-14 AND 227.10-1-27 REVISED BY BOUNDARY LINE AGREEMENT (BOOK 3500 PAGE 44)

**SPECIAL DISTRICTS**

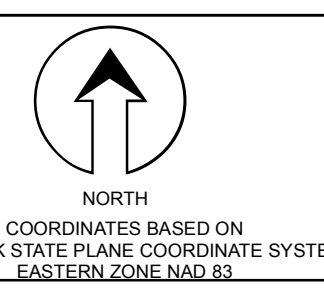
PROPERTY LINE	---
ORIGINAL LOT LINE	---
RAILROAD	---
STREAM OR DITCH	---
ROAD OR RAILWAY BNDY	---
COUNTY LINE	---

TOWN LINE	---
VILLAGE LINE	---
BLOCK LIMIT	---
GREAT LOT LINE	---
SCHOOL DISTRICT LINE	---

**LEGEND**

FIRE DISTRICT LINE	---
DNOTES COMMON OWNER	---
TAX MAP BLOCK NUMBER	---
TAX MAP PARCEL NUMBER	76.00-1-11
FILED PLAN LOT NUMBER	(14)

GREAT LOT NUMBER	76 (C)
CALCULATED ACREAGE	176 A
DEED ACREAGE	226 (B)
SCALED DIMENSION	173.2
DEED DIMENSION	173.2



227.08	227.09	227.10	227.11
227.12	227.13	227.14	227.15

SHEET INDEX

TAX MAP  
**TOWN OF QUEENSBURY**  
WARREN COUNTY, NEW YORK  
SCALE: 1 inch = 100 feet

**227.10**

DATE PRINTED: Apr 11, 2011