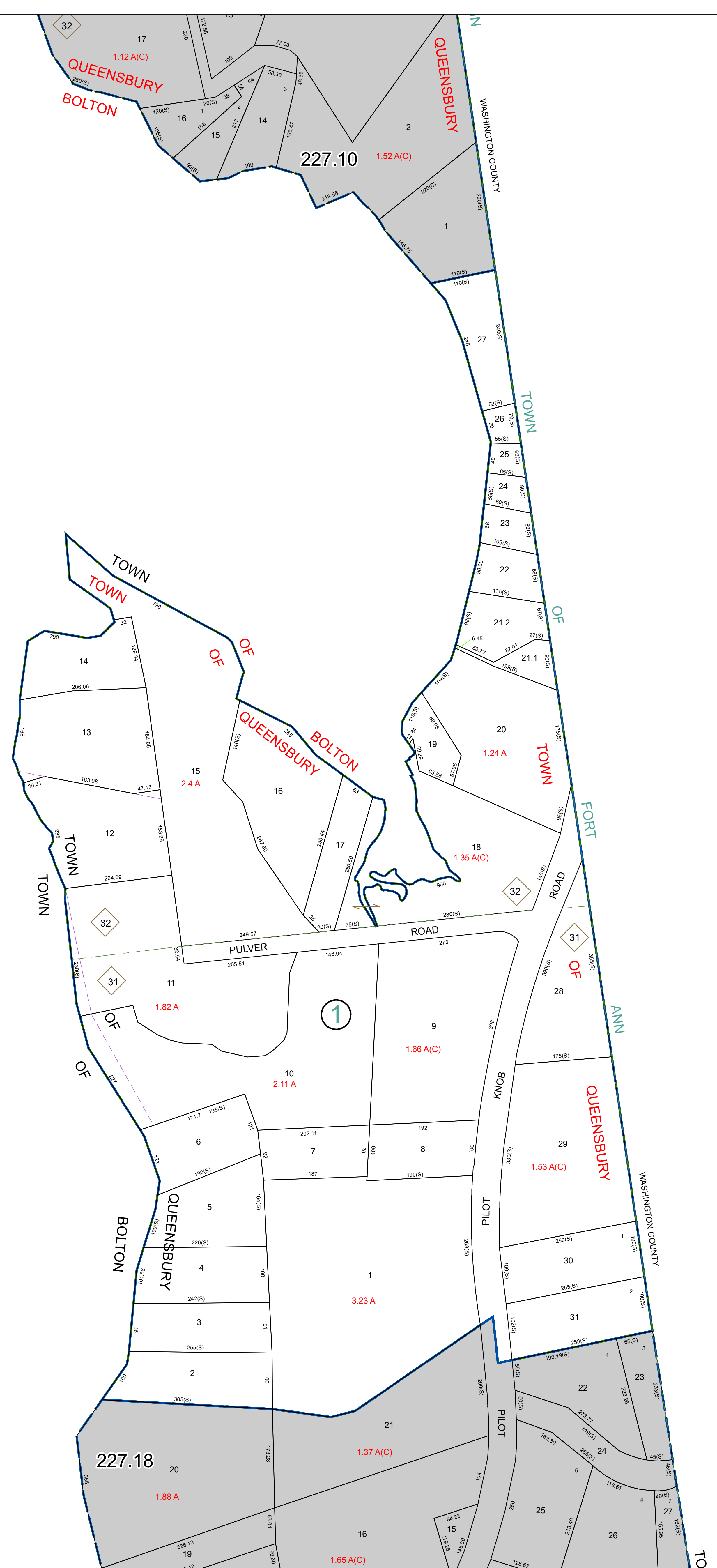


N 1,692,000  
E 729,000

N 1,692,000  
E 729,000

N 1,690,000  
E 729,000

N 1,690,000  
E 729,000



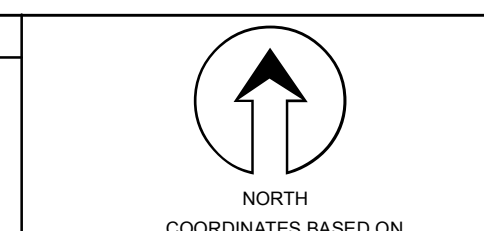
PREPARED BY:  
**WARREN COUNTY REAL PROPERTY SERVICES**  
LAKE GEORGE, NEW YORK

REVISION TABLE		
DATE	MADE BY	CHANGES OR ADDITIONS
2/7/2011	P. DIXON	PARCEL 227.14-1-14 REVISED BY DEED BOOK 4187 PAGE 143
8/17/2009	P. DIXON	PARCEL 227.14-1-13 REVISED BY DEED BOOK 3597 PAGE 83

SPECIAL DISTRICTS	
1	(Symbol: Circle with number 1)

LEGEND	
PROPERTY LINE	(Symbol: Solid line)
ORIGINAL LOT LINE	(Symbol: Dashed line)
RAILROAD	(Symbol: Line with cross-ticks)
STREAM OR DITCH	(Symbol: Wavy line)
ROAD OR RAILWAY ENDY	(Symbol: Dashed line with dots)
COUNTY LINE	(Symbol: Long dashed line)
TOWN LINE	(Symbol: Dotted line)
VILLAGE LINE	(Symbol: Dash-dot line)
BLOCK LIMIT	(Symbol: Dashed line with dots)
GREAT LOT LINE	(Symbol: Dotted line)
SCHOOL DISTRICT LINE	(Symbol: Long dashed line)
FIRE DISTRICT LINE	(Symbol: Dotted line)
DENOTES COMMON OWNER	(Symbol: Circle with 'C')
TAX MAP BLOCK NUMBER	(Symbol: Circle with '7')
TAX MAP PARCEL NUMBER	(Symbol: Circle with '76.00-1-11')
FILED PLAN LOT NUMBER	(Symbol: Circle with '14')

GREAT LOT NUMBER	
227.09	227.10
227.13	227.14
227.17	227.18



SHEET INDEX	
227.09	227.10
227.13	227.14
227.17	227.18

TAX MAP  
**TOWN OF QUEENSBURY**  
WARREN COUNTY, NEW YORK  
SCALE: 1 inch = 100 feet

**227.14**  
DATE PRINTED: Apr 11, 2011