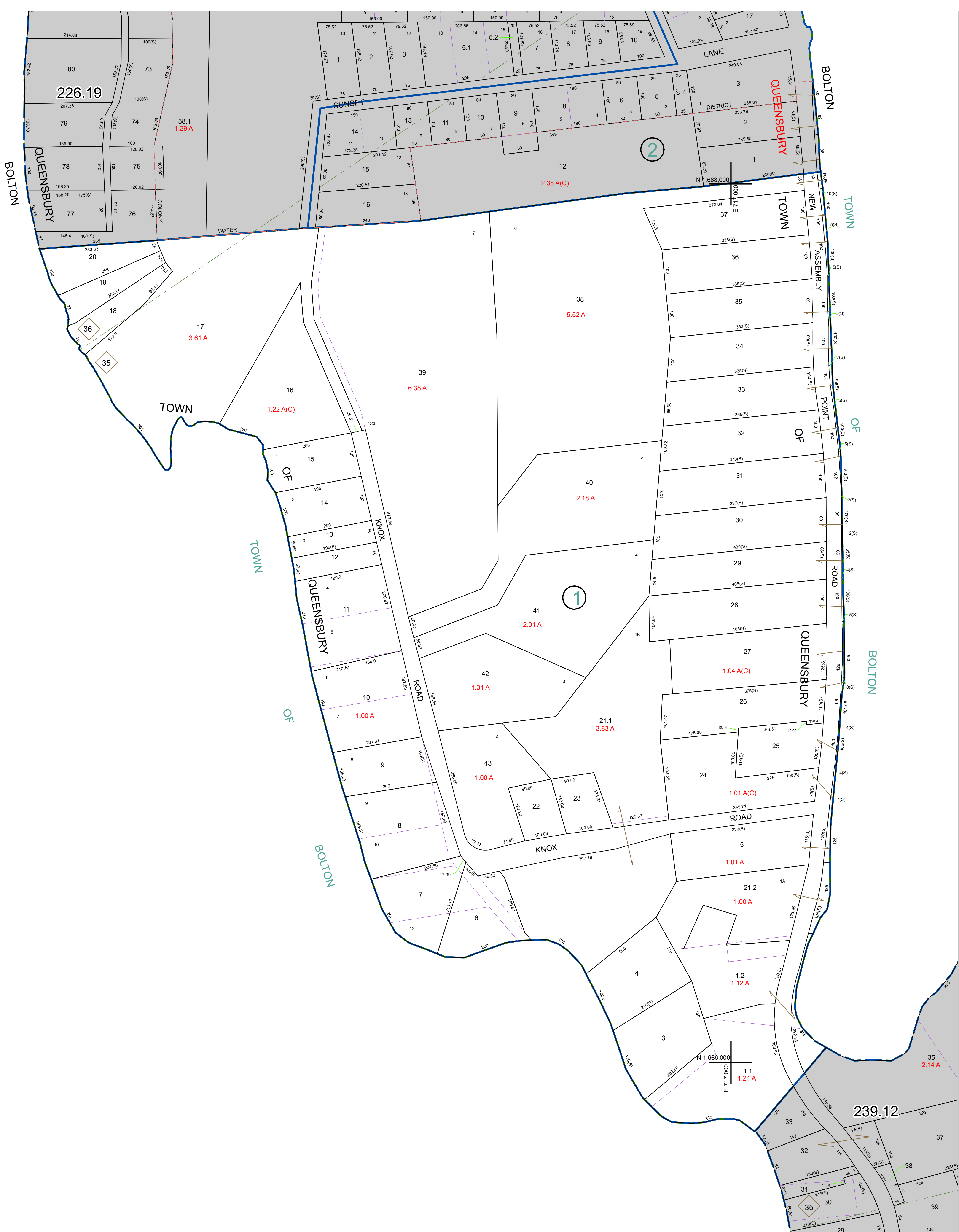


N 1,686,000  
E 714,000

N 1,686,000  
E 714,000



PREPARED BY:  
**WARREN COUNTY REAL PROPERTY SERVICES**  
LAKE GEORGE, NEW YORK

REVISION TABLE			
DATE	MADE BY	CHANGES OR ADDITIONS	
2/27/2011	R. DIBSON	PARCEL 239.07-1-1-1-1-1 REVISED BY A RECENTLY FILED SURVEY FOR BROWN AND STEINER.	
7/21/2010	R. DIBSON	PARCEL 239.07-1-1-1-1-1 REVISED BY DEED BOOK 4389 PAGE 134.	
6/27/2010	R. DIBSON	PARCEL 239.07-1-1-1-1-1 REVISED BY DEED BOOK 4389 PAGE 134.	
3/27/2009	R. DIBSON	PARCEL 239.07-1-1-2 MERGED INTO PARCEL 239.07-1-1 (BY OWNER REQUEST) AND DELETED FROM TAX MAP.	

SPECIAL DISTRICTS	
PROPERTY LINE	---
ORIGINAL LOT LINE	---
RAILROAD	---
STREAM OR DITCH	---
ROAD OR RAILWAY BNDY	---
COUNTY LINE	---

LEGEND	
TOWN LINE	---
VILLAGE LINE	---
BLOCK LIMIT	---
GREAT LOT LINE	---
SCHOOL DISTRICT LINE	---
FIRE DISTRICT LINE	---
DENOTES COMMON OWNER	---
TAX MAP BLOCK NUMBER	---
TAX MAP PARCEL NUMBER	---
FILED PLAN LOT NUMBER	---

GREAT LOT NUMBER	226.19
CALCULATED ACREAGE	78 (C)
DEED ACREAGE	178 A
SCALED DIMENSION	226 (B)
DEED DIMENSION	173.2

NORTH  
COORDINATES BASED ON  
NEW YORK STATE PLANE COORDINATE SYSTEM  
EASTERN ZONE NAD 83

SHEET INDEX	
226.19	239.08
239.07	239.12

TAX MAP  
**TOWN OF QUEENSBURY**  
WARREN COUNTY, NEW YORK  
SCALE: 1 inch = 100 feet  
DATE PRINTED: Apr 11, 2011