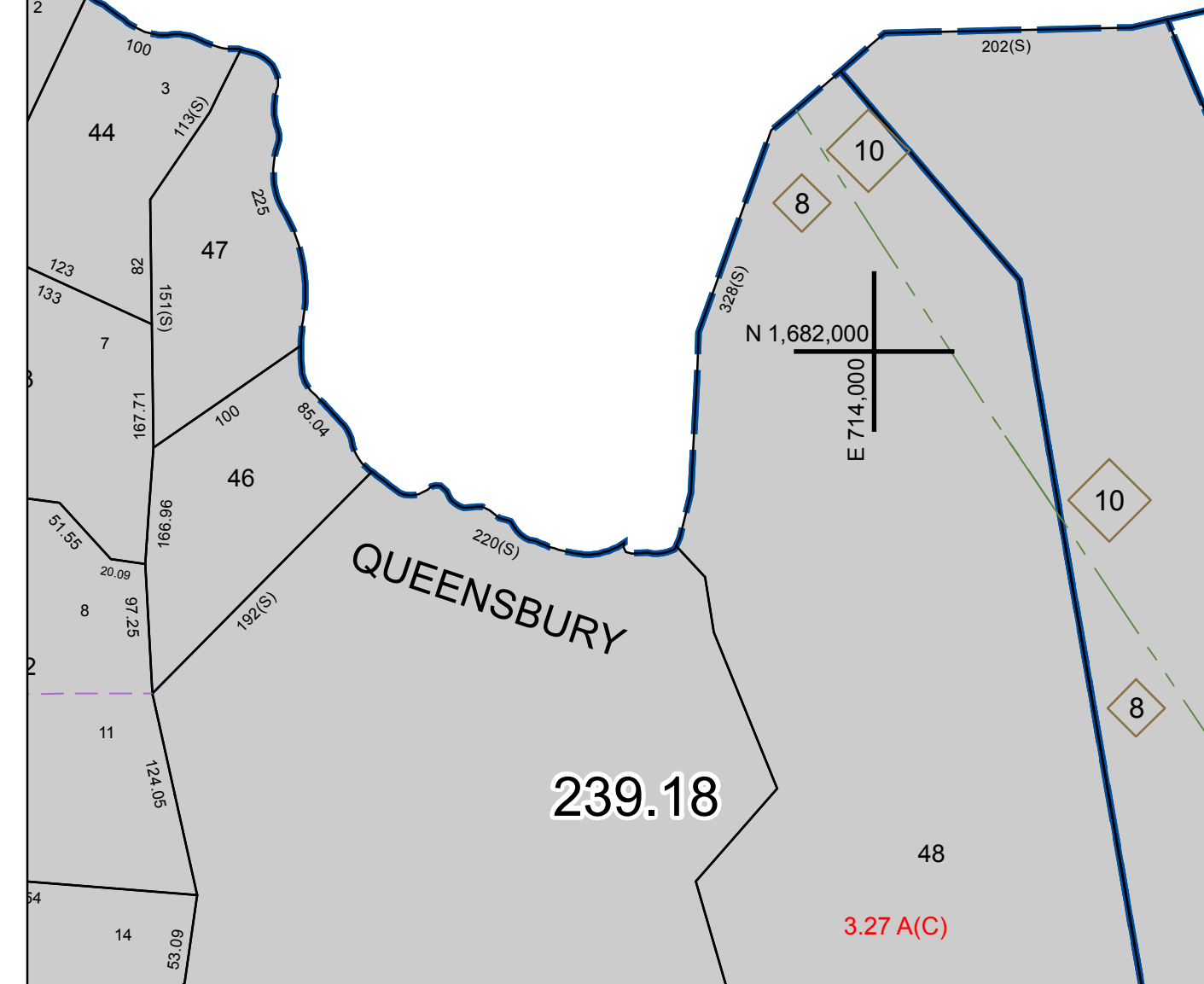
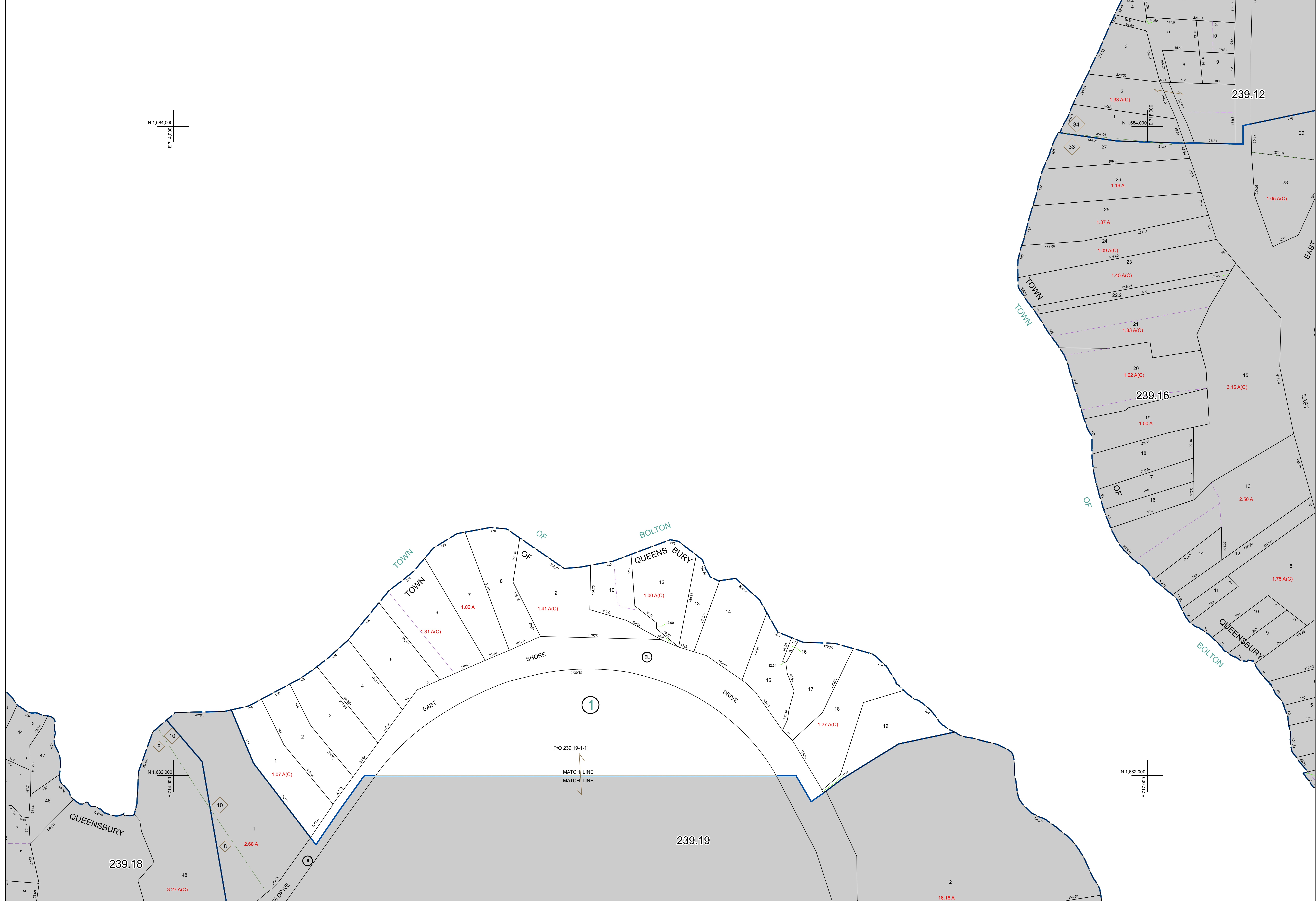


N 1,684,000  
E 714,000



N 1,682,000  
E 717,000

PREPARED BY:  
**WARREN COUNTY REAL PROPERTY SERVICES**  
LAKE GEORGE, NEW YORK

REVISION TABLE			
DATE	MADE BY	CHANGES OR ADDITIONS	

SPECIAL DISTRICTS	

LEGEND	
PROPERTY LINE	SOLID LINE
ORIGINAL LOT LINE	DASHED LINE
RAILROAD	WAVE LINE
STREAM OR DITCH	WAVE LINE WITH DOTS
ROAD OR RAILWAY BNDY	DASHED LINE WITH DOTS
COUNTY LINE	DASHED LINE WITH LONG DASHES
TOWN LINE	DASHED LINE WITH SHORT DASHES
VILLAGE LINE	DASHED LINE WITH LONG DASHES AND SHORT DASHES
BLOCK LIMIT	DASHED LINE WITH SHORT DASHES AND LONG DASHES
GREAT LOT LINE	DASHED LINE WITH LONG DASHES AND SHORT DASHES
SCHOOL DISTRICT LINE	DASHED LINE WITH LONG DASHES AND SHORT DASHES
FIRE DISTRICT LINE	DASHED LINE WITH LONG DASHES AND SHORT DASHES
DENOTES COMMON OWNER	DASHED LINE WITH SHORT DASHES
TAX MAP BLOCK NUMBER	7
TAX MAP PARCEL NUMBER	76.00-1-11
FILED PLAN LOT NUMBER	(14)

GREAT LOT NUMBER	76 (C)
CALCULATED ACREAGE	78 (C)
DEED ACREAGE	176 (A)
SCALED DIMENSION	226 (B)
DEED DIMENSION	173.2

NORTH  
COORDINATES BASED ON  
NEW YORK STATE PLANE COORDINATE SYSTEM  
EASTERN ZONE NAD 83

SHEET INDEX			
239.14	239.12	239.10	239.08
239.18	239.16	239.14	239.12
239.22	239.20	239.18	239.16

TAX MAP  
**TOWN OF QUEENSBURY**  
WARREN COUNTY, NEW YORK  
SCALE: 1 inch = 100 feet  
DATE PRINTED: Apr 11, 2011

239.15