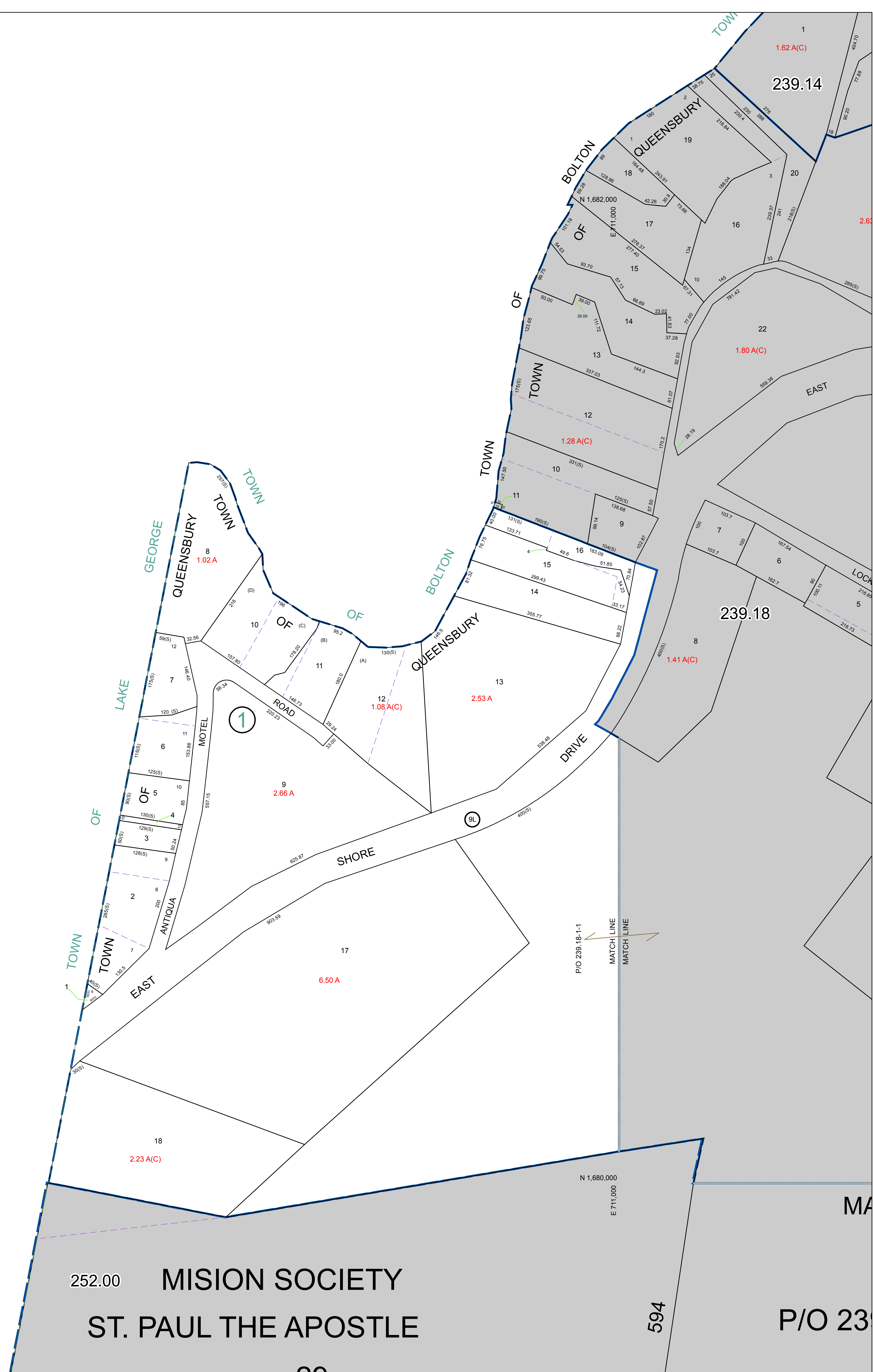


N 1,682,000  
E 708,000

N 1,680,000  
E 708,000



WARREN COUNTY REAL PROPERTY SERVICES  
LAKE GEORGE, NEW YORK

PREPARED BY:

REVISION TABLE		
DATE	MADE BY	CHANGES OR ADDITIONS

SPECIAL DISTRICTS	

LEGEND	
PROPERTY LINE	—
ORIGINAL LOT LINE	- - -
RAILROAD	—+—
STREAM OR DITCH	~~~~~
ROAD OR RAILWAY BNDY	—+—
COUNTY LINE	—+—
TOWN LINE	—+—
VILLAGE LINE	—+—
BLOCK LIMIT	—+—
GREAT LOT LINE	—+—
SCHOOL DISTRICT LINE	—+—
FIRE DISTRICT LINE	—+—
DENOTES COMMON OWNER	—+—
TAX MAP BLOCK NUMBER	7
TAX MAP PARCEL NUMBER	76.00-1-11
FILED PLAN LOT NUMBER	(14)
GREAT LOT NUMBER	76 (C)
CALCULATED ACREAGE	178 A
DEED ACREAGE	228 (B)
SCALED DIMENSION	173.2
DEED DIMENSION	173.2

COORDINATES BASED ON  
NEW YORK STATE PLANE COORDINATE SYSTEM  
EASTERN ZONE NAD 83

NORTH

SCALE: 1 inch = 100 feet

SHEET INDEX	
239.14	239.18
239.18	239.19

TAX MAP  
TOWN OF QUEENSBURY  
WARREN COUNTY, NEW YORK

239.17

SCALE: 1 inch = 100 feet

DATE PRINTED: Apr 11, 2011

THIS DOCUMENT PREPARED FOR TAX PURPOSES ONLY