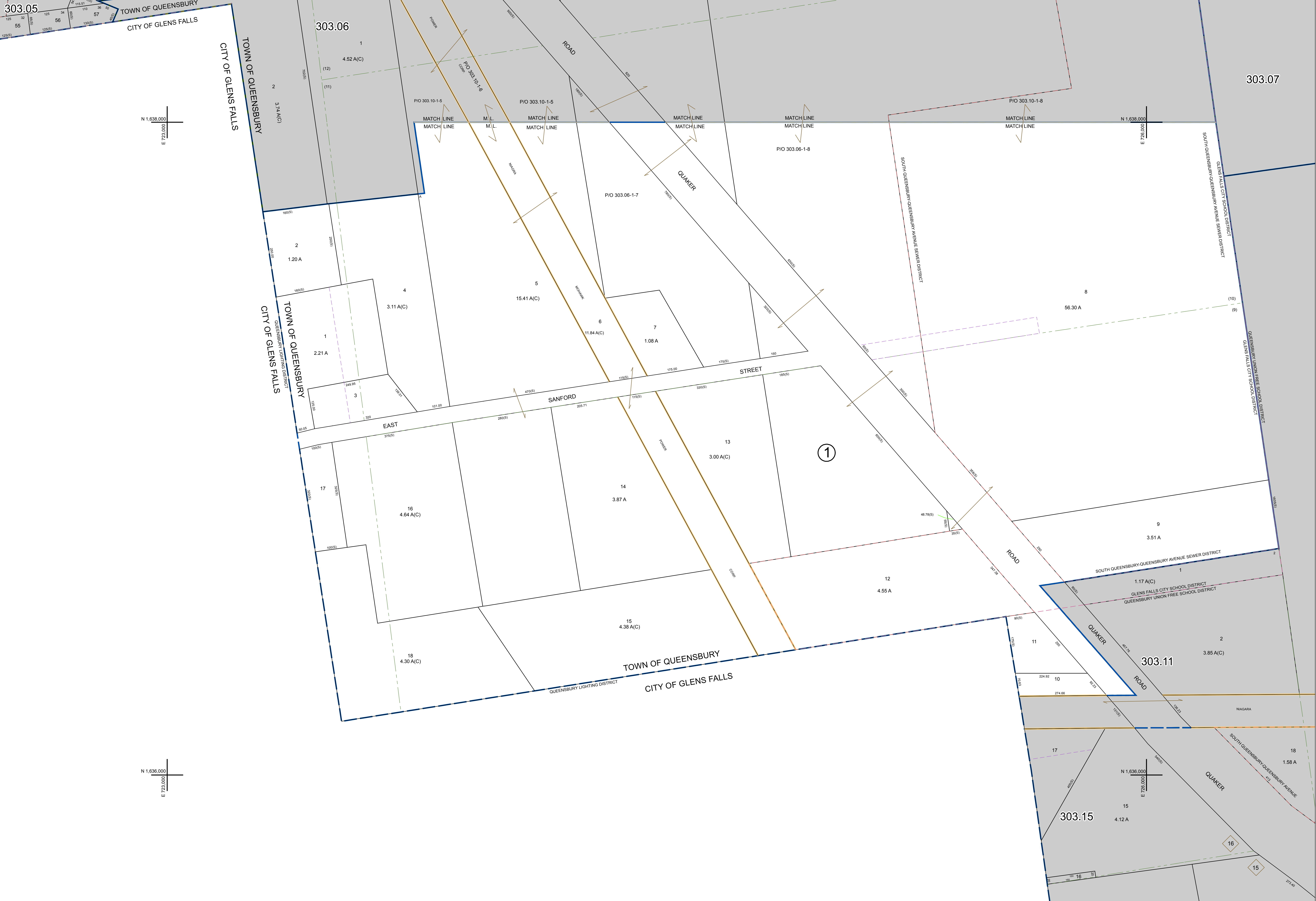


N 1,638,000
E 726,000

N 1,638,000
E 726,000

N 1,638,000
E 726,000

N 1,638,000
E 726,000



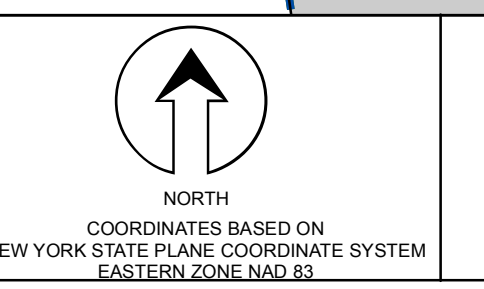
PREPARED BY:
WARREN COUNTY REAL PROPERTY SERVICES
LAKE GEORGE, NEW YORK

REVISION TABLE		
DATE	MADE BY	CHANGES OR ADDITIONS
11/12/2008	P. DIXON	PARCEL 303.10-1-18 REVISED BY DEED BOOK 1637 PAGE 143.
11/12/2008	P. DIXON	PARCEL 303.10-1-18 REVISED TO CORRECT THE CHANGING SIDES OF RECORD (BOOK 1377 PAGE 463).
11/12/2008	P. DIXON	MUTUAL BOUNDARY OF PARCELS 303.10-1-16 REVISED BY AN UNFILED SURVEY FOR BINDER.
11/12/2008	P. DIXON	PARCEL 303.10-1-15 REVISED BY DEED RESEARCH AND REVIEW OF AN UNFILED SURVEY FOR BINDER.

SPECIAL DISTRICTS	
PROPERTY LINE	---
ORIGINAL LOT LINE	---
RAILROAD	---
STREAM OR DITCH	---
ROAD OR RAILWAY BNDY	---
COUNTY LINE	---

LEGEND	
TOWN LINE	---
VILLAGE LINE	---
BLOCK LIMIT	---
GREAT LOT LINE	---
SCHOOL DISTRICT LINE	---
FIRE DISTRICT LINE	---
DNOTES COMMON OWNER	---
TAX MAP BLOCK NUMBER	---
TAX MAP PARCEL NUMBER	---
FILED PLAN LOT NUMBER	---

GREAT LOT NUMBER	78 (C)
CALCULATED ACREAGE	178 A
DEED ACREAGE	228 (B)
SCALED DIMENSION	173.2
DEED DIMENSION	



SHEET INDEX		
303.05	303.06	303.07
	X	

TAX MAP
TOWN OF QUEENSBURY
WARREN COUNTY, NEW YORK
SCALE: 1 inch = 100 feet
DATE PRINTED: Apr 11, 2011