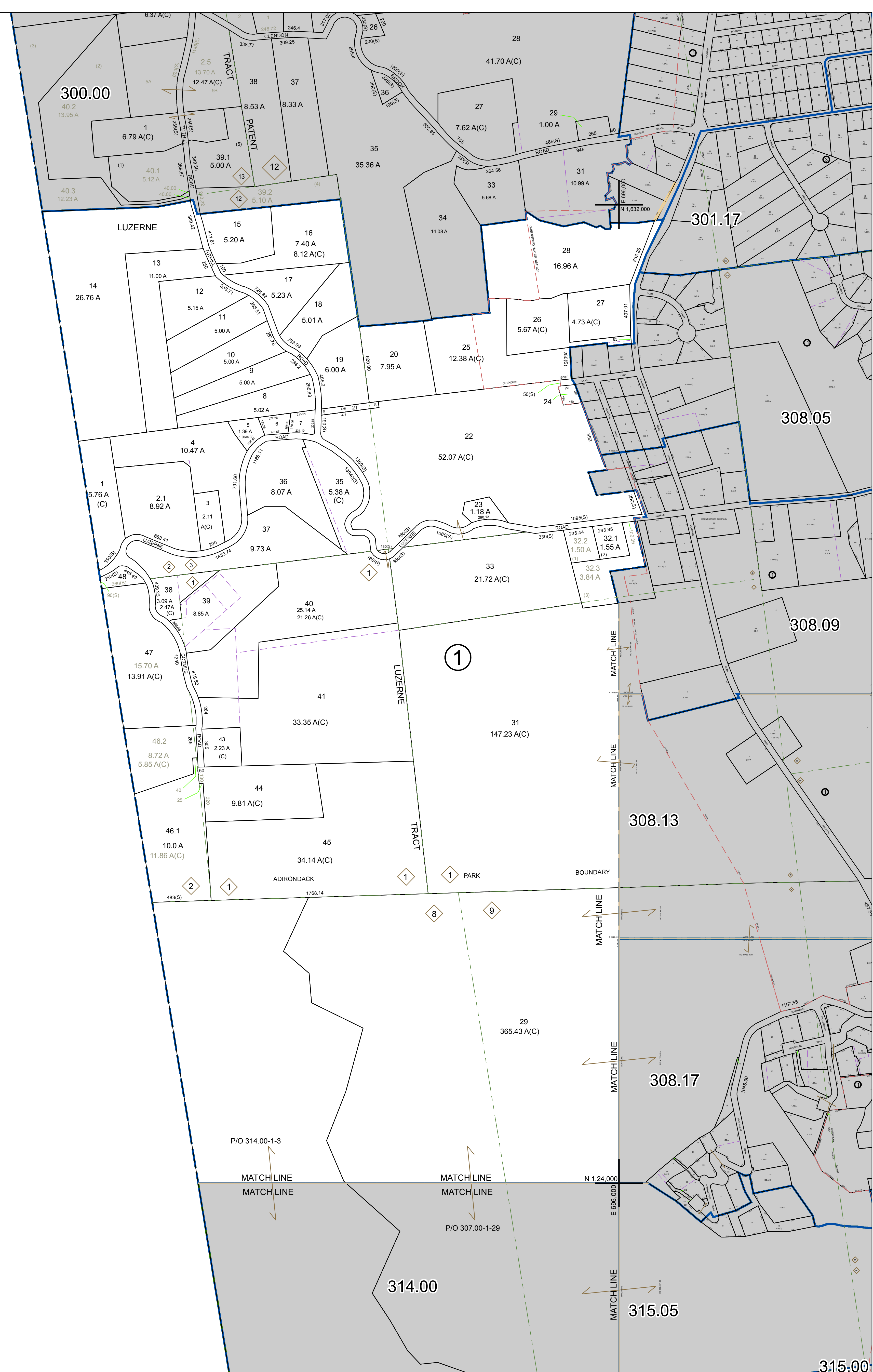



N 1,832,000
E 684,000

N 1,824,000
E 684,000



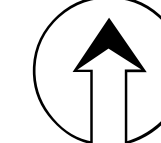

WARREN COUNTY REAL PROPERTY SERVICES
 LAKE GEORGE, NEW YORK

REVISION TABLE		
DATE	MADE BY	CHANGES OR ADDITIONS
8/27/2010	P. DIXON	PARCEL 307.00-1-10 REVISED BY DEED BOOK 4067 PAGE 63
4/22/2010	P. DIXON	307.00-1-32.4 MERGED INTO 309.09-1-7 (BY OWNER REQUEST DATED 3/13/10) AND DELETED FROM TAX MAP.

SPECIAL DISTRICTS	
PROPERTY LINE	---
ORIGINAL LOT LINE	---
RAILROAD	---
STREAM OR DITCH	---
ROAD OR RAILWAY BNDY	---
COUNTY LINE	---

LEGEND	
TOWN LINE	---
VILLAGE LINE	---
BLOCK LIMIT	---
GREAT LOT LINE	---
SCHOOL DISTRICT LINE	---
FIRE DISTRICT LINE	---
DEEDS COMMON OWNER	---
TAX MAP BLOCK NUMBER	---
TAX MAP PARCEL NUMBER	---
FILED PLAN LOT NUMBER	---

GREAT LOT NUMBER	314.00
CALCULATED ACREAGE	76 (C)
DEED ACREAGE	77A
SCALED DIMENSION	228 (B)
DEED DIMENSION	173.2


 NORTH
 COORDINATES BASED ON
 NEW YORK STATE PLANE COORDINATE SYSTEM
 EASTERN ZONE NAD 83

SHEET INDEX	
300.00	310.00
314.00	315.00

TAX MAP
TOWN OF QUEENSBURY
 WARREN COUNTY, NEW YORK
 SCALE: 1 inch = 400 feet
 DATE PRINTED: Apr 11, 2011