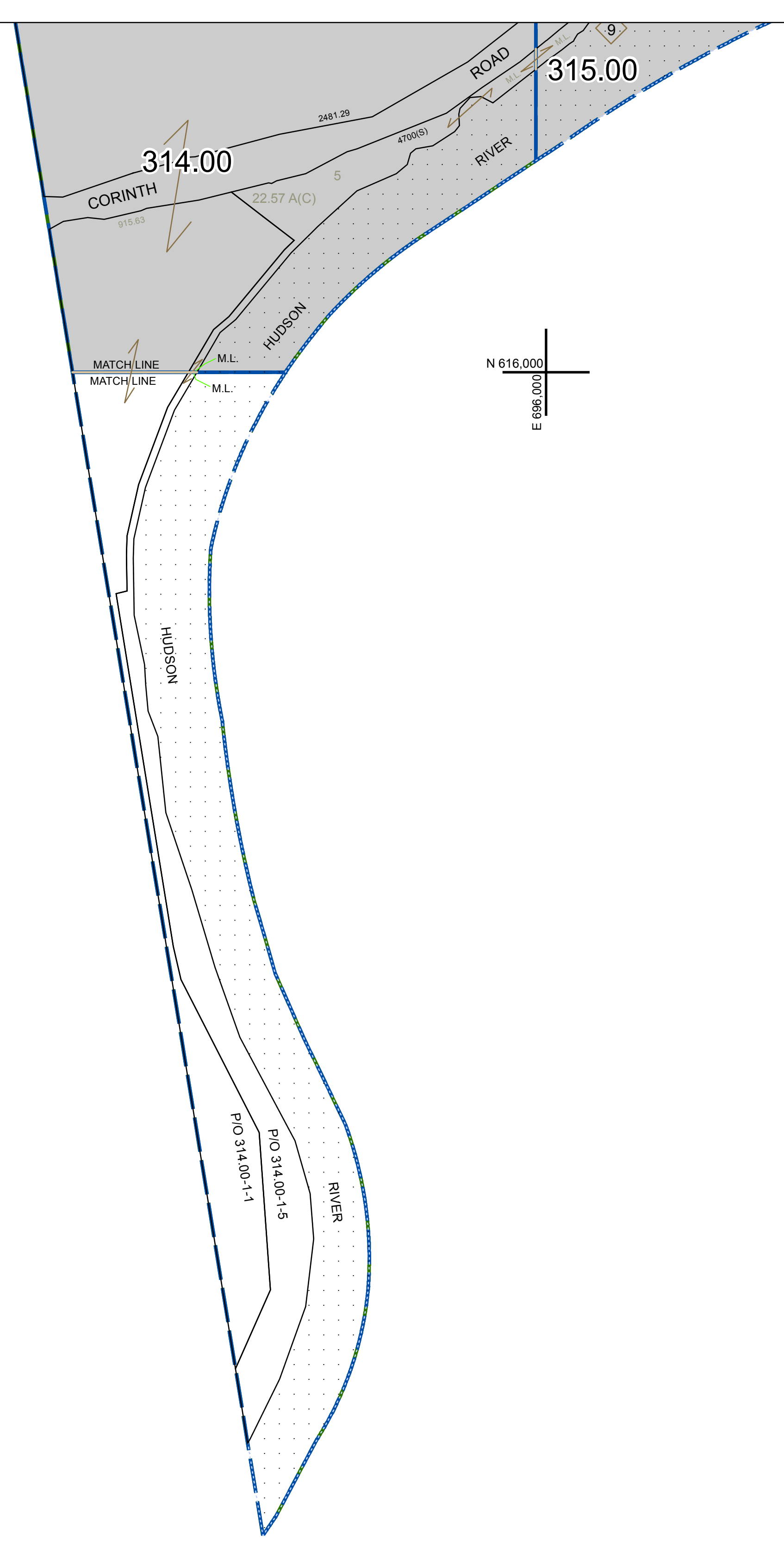


N 1,616,000  
E 684,000

N 616,000  
E 696,000

N 1,608,000  
E 684,000

N 1,608,000  
E 696,000



PREPARED BY:  
**WARREN COUNTY REAL PROPERTY SERVICES**  
LAKE GEORGE, NEW YORK

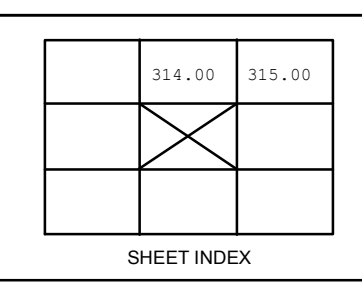
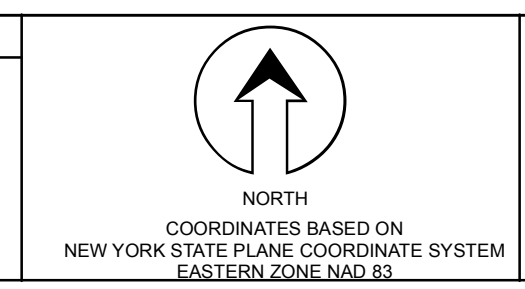
REVISION TABLE		
DATE	MADE BY	CHANGES OR ADDITIONS

SPECIAL DISTRICTS	
PROPERTY LINE	---
ORIGINAL LOT LINE	---
RAILROAD	---
STREAM OR DITCH	---
ROAD OR RAILWAY BNDY	---
COUNTY LINE	---

TOWN LINE	---	VILLAGE LINE	---
BLOCK LIMIT	---	GREAT LOT LINE	---
SCHOOL DISTRICT LINE	---		

LEGEND	
FIRE DISTRICT LINE	---
DENOTES COMMON OWNER	---
TAX MAP BLOCK NUMBER	---
TAX MAP PARCEL NUMBER	---
FILED PLAN LOT NUMBER	---

GREAT LOT NUMBER	78 (C)
CALCULATED ACREAGE	178 A
DEED ACREAGE	228 (B)
DEED DIMENSION	173.2



TAX MAP  
**TOWN OF QUEENSBURY**  
WARREN COUNTY, NEW YORK  
SCALE: 1 inch = 400 feet

**319.00**  
DATE PRINTED: Apr 11, 2011