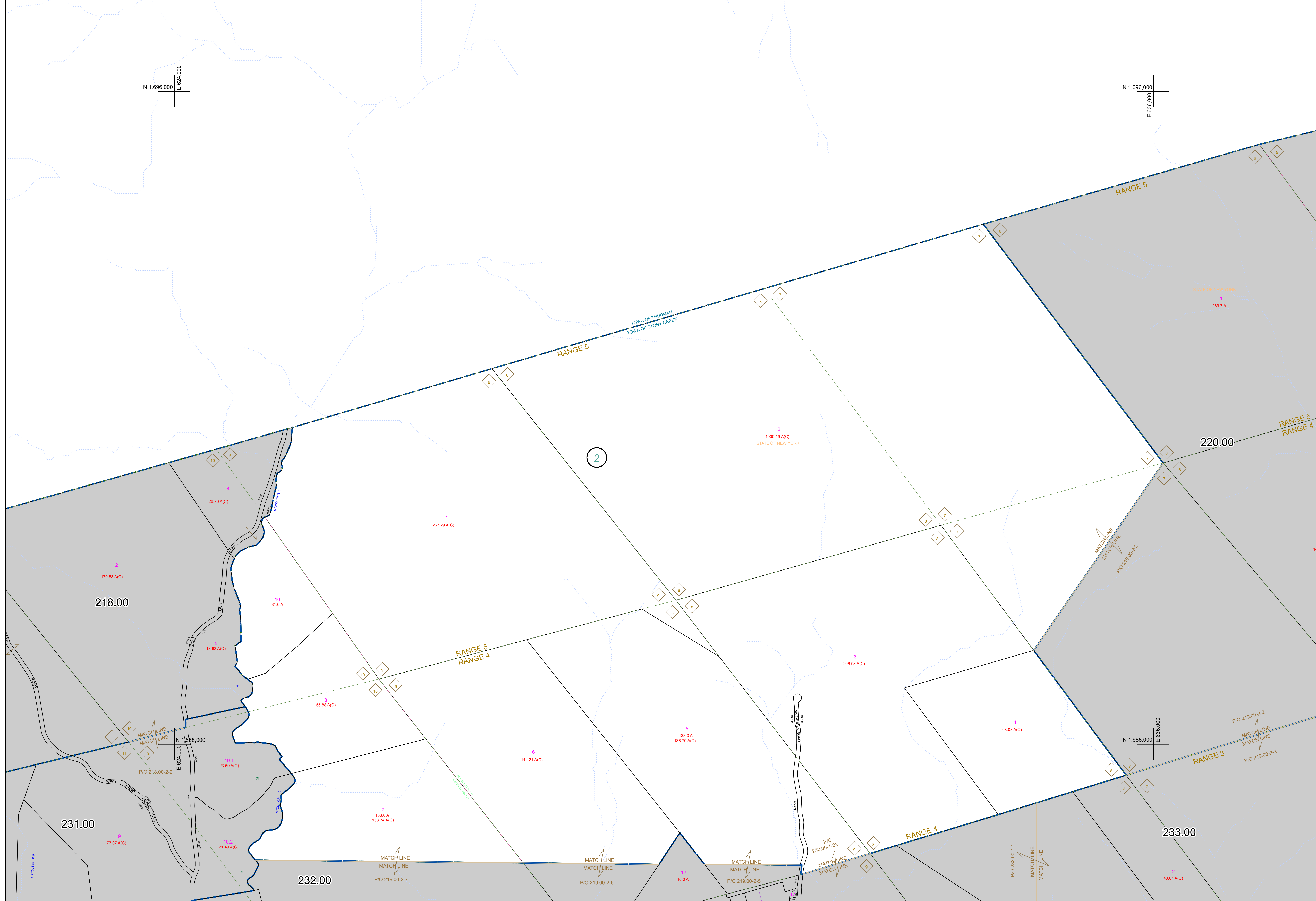



N 1,696,000
E 624,000

N 1,696,000
E 636,000





WARREN COUNTY REAL PROPERTY SERVICES
 LAKE GEORGE, NEW YORK
 PREPARED BY:

REVISION TABLE	
DATE	MADE BY
12/17/2019	B. DIXON
CHANGES OR ADDITIONS	
RANGES 219.00-1-1 TO 219.00-2-7 REVISED BY A RECENTLY FILED SUBSTITUTION MAP FOR RELIEF.	

SPECIAL DISTRICTS	
PROPERTY LINE	---
ORIGINAL LOT LINE	---
RAILROAD	---
STREAM OR DITCH	---
ROAD OR RAILWAY BNDY	---
COUNTY LINE	---

LEGEND	
TOWN LINE	---
VILLAGE LINE	---
BLOCK LIMIT	---
GREAT LOT LINE	---
SCHOOL DISTRICT LINE	---
FIRE DISTRICT LINE	---
DIAGONALS COMMON OWNER	---
TAX MAP BLOCK NUMBER	---
TAX MAP PARCEL NUMBER	---
FILED PLAN LOT NUMBER	---

GREAT LOT NUMBER	219.00
CALCULATED ACREAGE	78 (C)
DEED ACREAGE	178 A
SCALED DIMENSION	225 (B)
DEED DIMENSION	173.2


 NORTH
 COORDINATES BASED ON
 NEW YORK STATE PLANE COORDINATE SYSTEM
 EASTERN ZONE NAD 83

SHEET INDEX	
218.00	220.00
219.00	221.00
220.00	222.00
221.00	223.00

TAX MAP
TOWN OF STONY CREEK
 WARREN COUNTY, NEW YORK
219.00
 SCALE: 1 inch = 400 feet
 DATE PRINTED: Apr 11, 2011

THIS DOCUMENT PREPARED FOR TAX PURPOSES ONLY