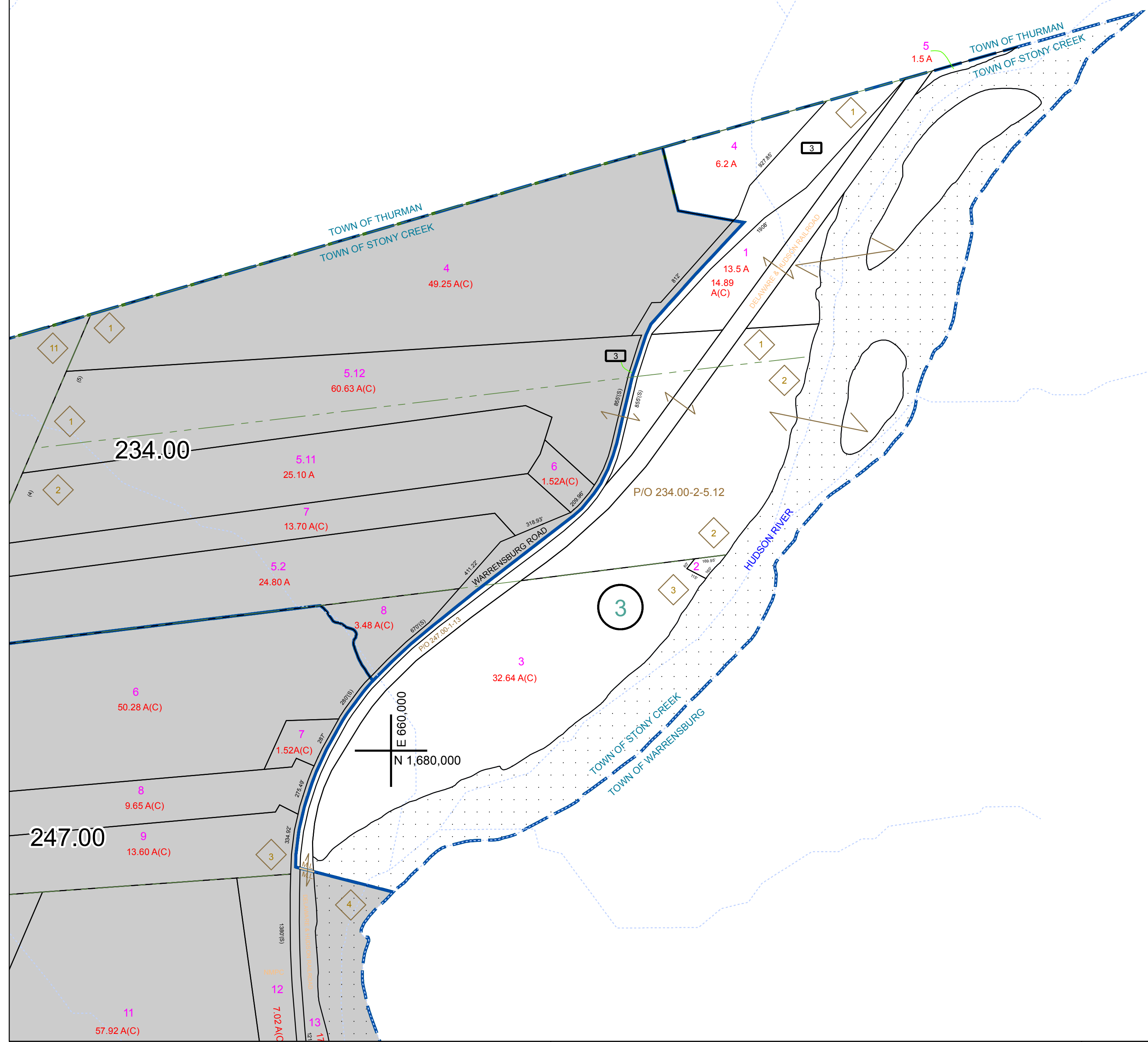


N 1,688,000
E 662,000

N 1,688,000
E 672,000



N 1,680,000
E 672,000

PREPARED BY:
WARREN COUNTY REAL PROPERTY SERVICES
LAKE GEORGE, NEW YORK

REVISION TABLE		
DATE	MADE BY	CHANGES OR ADDITIONS

SPECIAL DISTRICTS	

LEGEND	
PROPERTY LINE	---
ORIGINAL LOT LINE	- - - - -
RAILROAD	—+—+—+—
STREAM OR DITCH	~~~~~
ROAD OR RAILWAY BNDY	—+—+—+—
COUNTY LINE	—+—+—+—
TOWN LINE	---
VILLAGE LINE	- - - - -
BLOCK LIMIT	---
GREAT LOT LINE	---
SCHOOL DISTRICT LINE	---
FIRE DISTRICT LINE	---
DENOTES COMMON OWNER	---
TAX MAP BLOCK NUMBER	7
TAX MAP PARCEL NUMBER	76.00-1-11
FILED PLAN LOT NUMBER	(14)

GREAT LOT NUMBER	76 (C)
CALCULATED ACREAGE	178 A
DEED ACREAGE	228 (B)
DEED DIMENSION	173.2



SHEET INDEX	
234.00	235.00

TAX MAP
TOWN OF STONY CREEK
WARREN COUNTY, NEW YORK

235.00
SCALE: 1 inch = 400 feet
DATE PRINTED: Apr 11, 2011

THIS DOCUMENT PREPARED FOR TAX PURPOSES ONLY