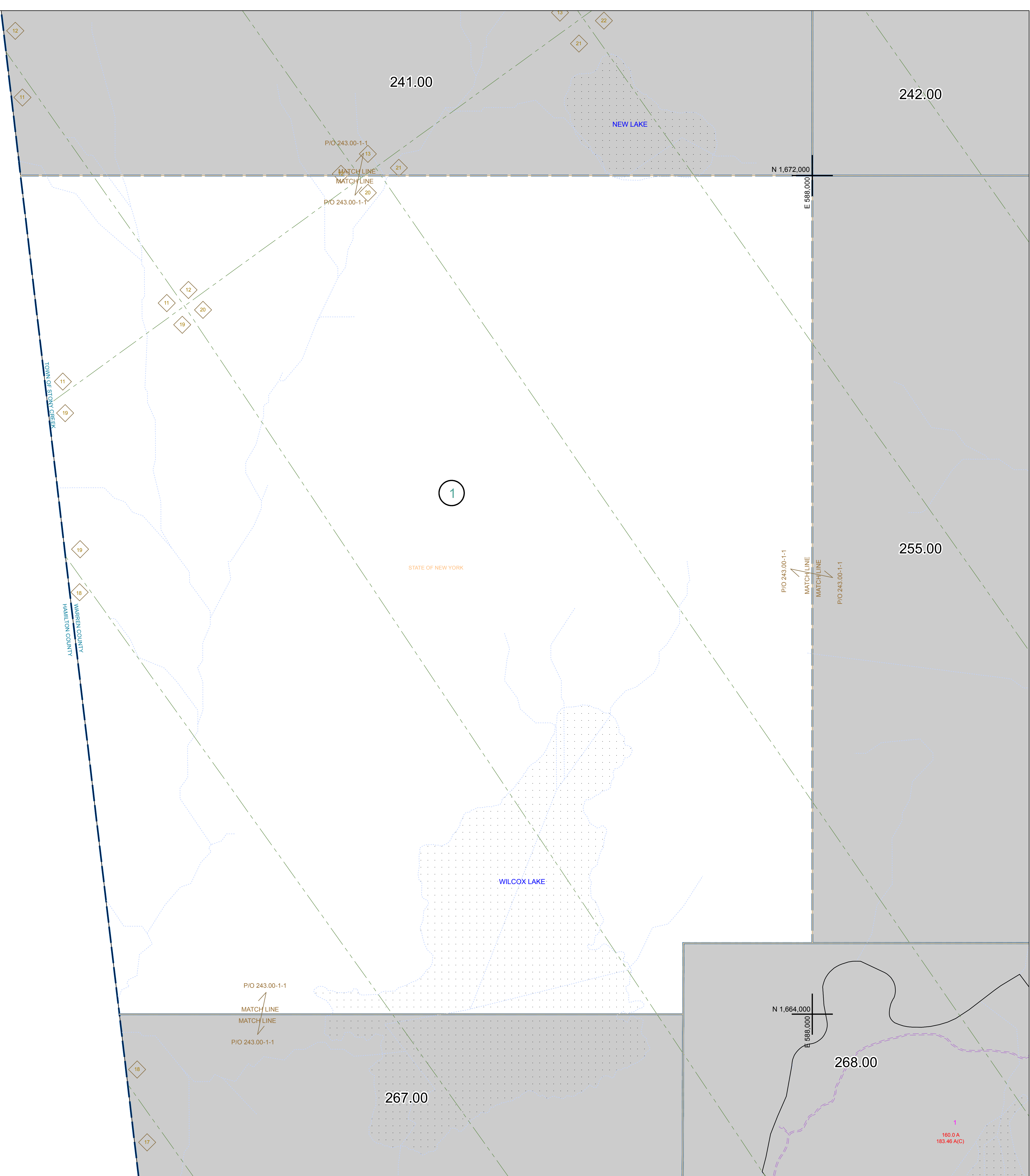


N 1,672,000
E 576,000

N 1,664,000
E 576,000



N 1,664,000
E 588,000



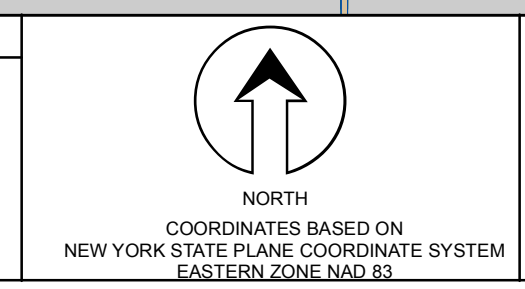
PREPARED BY:
WARREN COUNTY REAL PROPERTY SERVICES
LAKE GEORGE, NEW YORK

REVISION TABLE		
DATE	MADE BY	CHANGES OR ADDITIONS

SPECIAL DISTRICTS	
PROPERTY LINE	---
ORIGINAL LOT LINE	---
RAILROAD	---
STREAM OR DITCH	---
ROAD OR RAILWAY BNDY	---
COUNTY LINE	---

LEGEND	
TOWN LINE	---
VILLAGE LINE	---
BLOCK LIMIT	---
GREAT LOT LINE	---
SCHOOL DISTRICT LINE	---
FIRE DISTRICT LINE	---
DNOTES COMMON OWNER	---
TAX MAP BLOCK NUMBER	---
TAX MAP PARCEL NUMBER	---
FILED PLAN LOT NUMBER	---

GREAT LOT NUMBER	78 (C)
CALCULATED ACREAGE	176 A
DEED ACREAGE	226 (B)
SCALED DIMENSION	173.2
DEED DIMENSION	173.2



SHEET INDEX	
241.00	242.00
247.00	248.00

TAX MAP
TOWN OF STONY CREEK
WARREN COUNTY, NEW YORK

254.00
180.0 A
183.46 A(C)
SCALE: 1 inch = 400 feet
DATE PRINTED: Apr 11, 2011

THIS DOCUMENT PREPARED FOR TAX PURPOSES ONLY