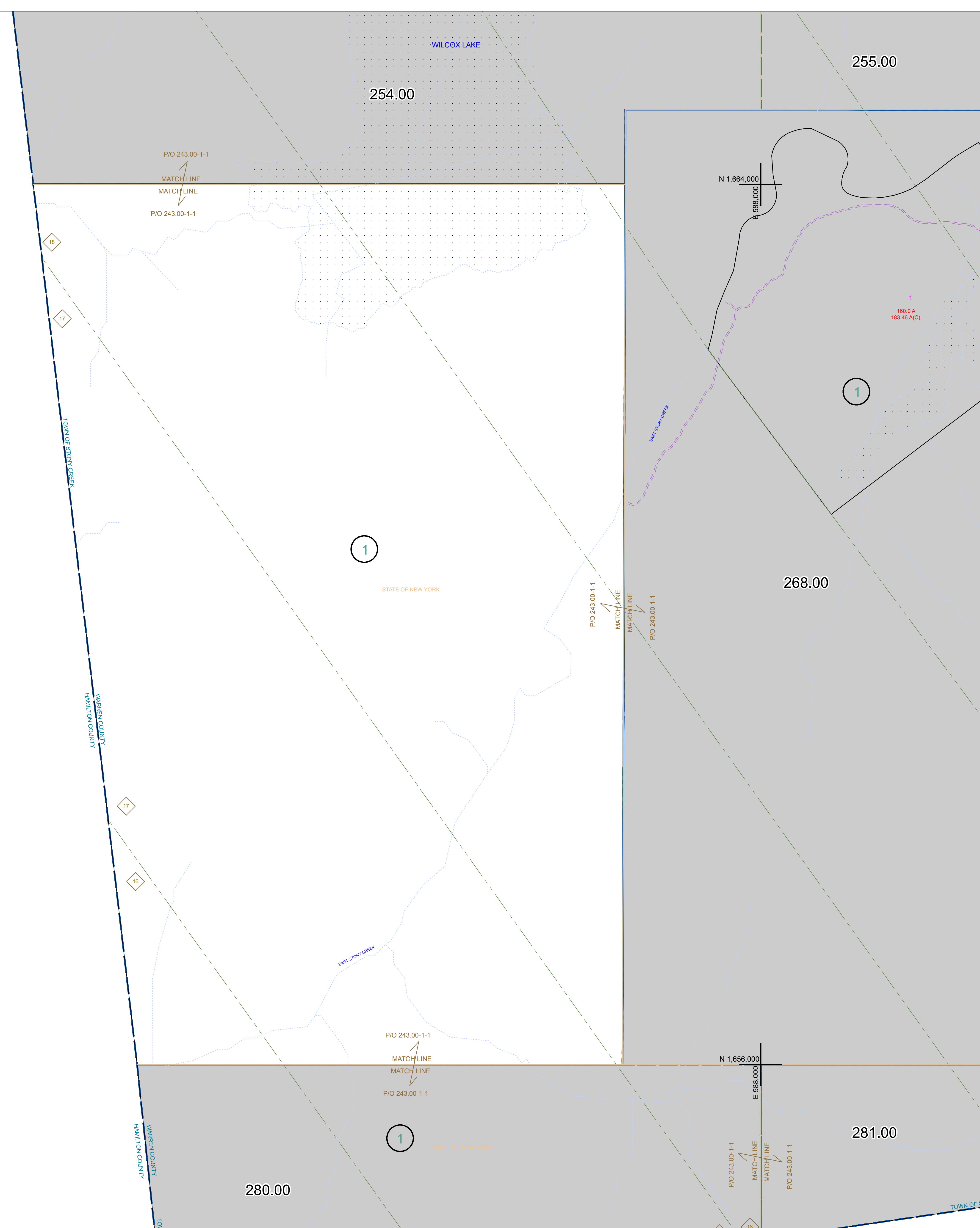



N 1,664,000
E 576,000

N 1,656,000
E 576,000




 PREPARED BY:
WARREN COUNTY REAL PROPERTY SERVICES
 LAKE GEORGE, NEW YORK

REVISION TABLE		
DATE	MADE BY	CHANGES OR ADDITIONS

SPECIAL DISTRICTS	

LEGEND	
PROPERTY LINE	---
ORIGINAL LOT LINE	---
RAILROAD	---
STREAM OR DITCH	---
ROAD OR RAILWAY ENDY	---
COUNTY LINE	---
TOWN LINE	---
VILLAGE LINE	---
BLOCK LIMIT	---
GREAT LOT LINE	---
SCHOOL DISTRICT LINE	---
FIRE DISTRICT LINE	---
DNOTES COMMON OWNER	---
TAX MAP BLOCK NUMBER	---
TAX MAP PARCEL NUMBER	---
FILED PLAN LOT NUMBER	---
GREAT LOT NUMBER	---
CALCULATED ACREAGE	---
DEED ACREAGE	---
SCALED DIMENSION	---
DEED DIMENSION	---

NORTH
 COORDINATES BASED ON
 NEW YORK STATE PLANE COORDINATE SYSTEM
 EASTERN ZONE NAD 83

SHEET INDEX	
254.00	255.00
264.00	265.00
280.00	281.00

TAX MAP
TOWN OF STONY CREEK
 WARREN COUNTY, NEW YORK
 SCALE: 1 inch = 400 feet
 DATE PRINTED: Apr 11, 2011

THIS DOCUMENT PREPARED FOR TAX PURPOSES ONLY