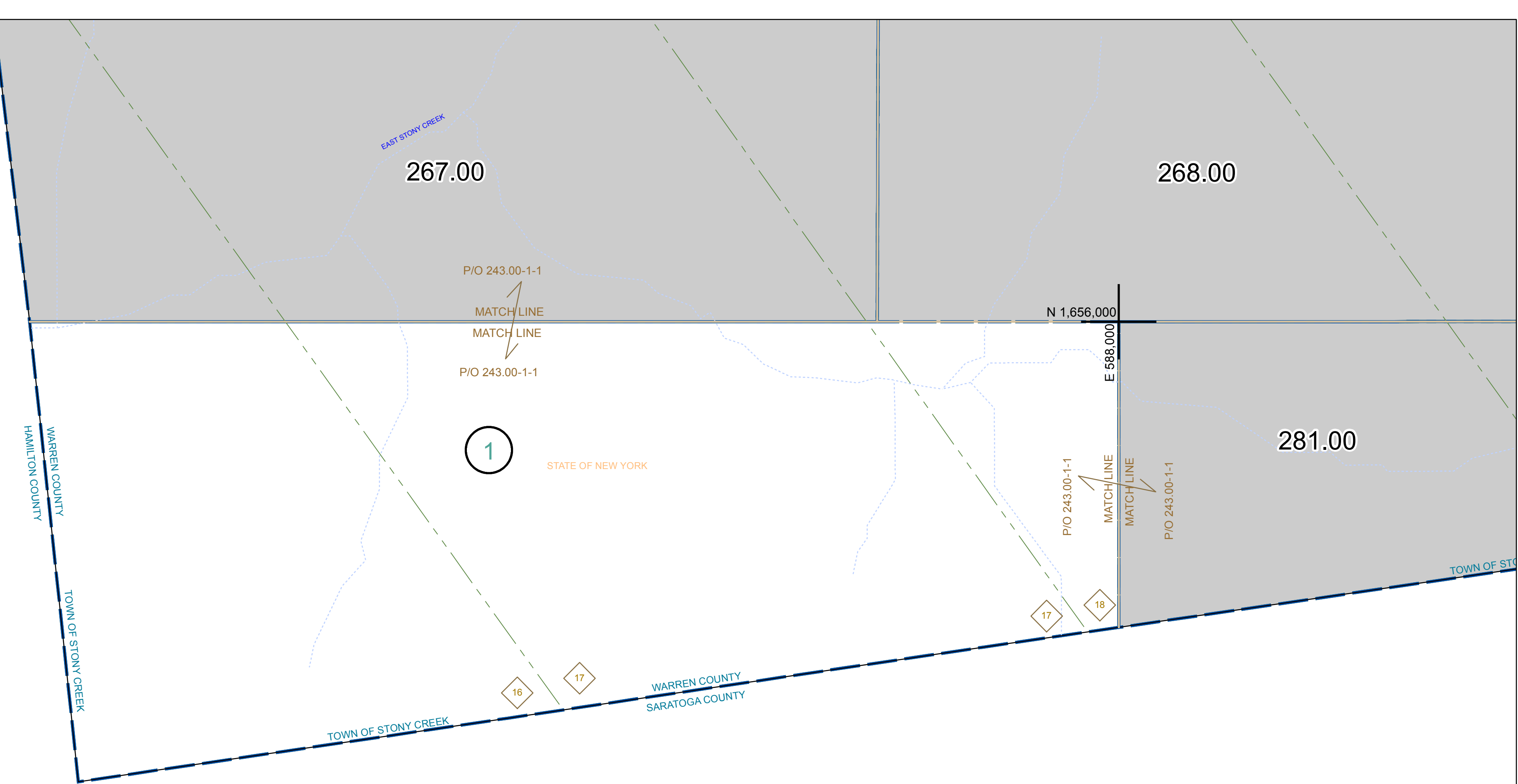


N 1,656,000
E 576,000



N 1,648,000
E 576,000

N 1,648,000
E 588,000

PREPARED BY:
WARREN COUNTY REAL PROPERTY SERVICES
LAKE GEORGE, NEW YORK

REVISION TABLE		
DATE	MADE BY	CHANGES OR ADDITIONS

SPECIAL DISTRICTS	

LEGEND	
PROPERTY LINE	—
ORIGINAL LOT LINE	- - - - -
RAILROAD	—+—+—+—
STREAM OR DITCH	~~~~~
ROAD OR RAILWAY ENDY	—+—+—+—
COUNTY LINE	- - - - -
TOWN LINE	- - - - -
VILLAGE LINE	- - - - -
BLOCK LIMIT	- - - - -
GREAT LOT LINE	- - - - -
SCHOOL DISTRICT LINE	- - - - -
FIRE DISTRICT LINE	- - - - -
DENOTES COMMON OWNER	—
TAX MAP BLOCK NUMBER	7
TAX MAP PARCEL NUMBER	76.00-1-11
FILED PLAN LOT NUMBER	(14)
GREAT LOT NUMBER	76 (C)
CALCULATED ACREAGE	178 A
DEED ACREAGE	228 (B)
SCALED DIMENSION	173.2
DEED DIMENSION	173.2

NORTH
COORDINATES BASED ON
NEW YORK STATE PLANE COORDINATE SYSTEM
EASTERN ZONE NAD 83

267.00	268.00
281.00	

SHEET INDEX

TAX MAP
TOWN OF STONY CREEK
WARREN COUNTY, NEW YORK
280.00
SCALE: 1 inch = 400 feet
DATE PRINTED: Apr 11, 2011