


N 1,728,000
E 648,000

N 1,728,000
E 660,000

N 1,720,000
E 648,000

N 1,720,000
E 660,000



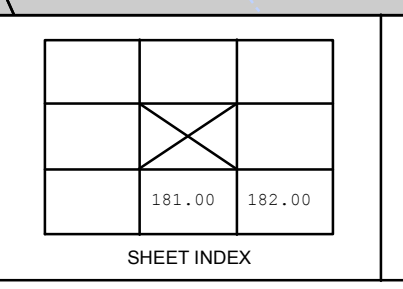

 PREPARED BY:
WARREN COUNTY REAL PROPERTY SERVICES
 LAKE GEORGE, NEW YORK

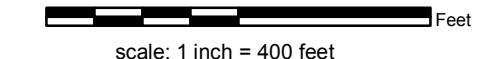
REVISION TABLE		
DATE	MADE BY	CHANGES OR ADDITIONS

SPECIAL DISTRICTS	

LEGEND	
PROPERTY LINE	—
ORIGINAL LOT LINE	- - -
RAILROAD	—+—+—+—
STREAM OR DITCH	~~~~~
ROAD OR RAILWAY BNDY	—+—+—+—
COUNTY LINE	—+—+—+—
TOWN LINE	—+—+—+—
VILLAGE LINE	—+—+—+—
BLOCK LIMIT	—+—+—+—
GREAT LOT LINE	—+—+—+—
SCHOOL DISTRICT LINE	—+—+—+—
FIRE DISTRICT LINE	—+—+—+—
DENOTES COMMON OWNER	
TAX MAP BLOCK NUMBER	7
TAX MAP PARCEL NUMBER	76.00-1-11
FILED PLAN LOT NUMBER	(14)

GREAT LOT NUMBER	76 (C)
CALCULATED ACREAGE	176 A
DEED ACREAGE	226 (B)
SCALED DIMENSION	173.2
DEED DIMENSION	173.2



TAX MAP
TOWN OF THURMAN
 WARREN COUNTY, NEW YORK

 DATE PRINTED: Apr 11, 2011

THIS DOCUMENT PREPARED FOR TAX PURPOSES ONLY