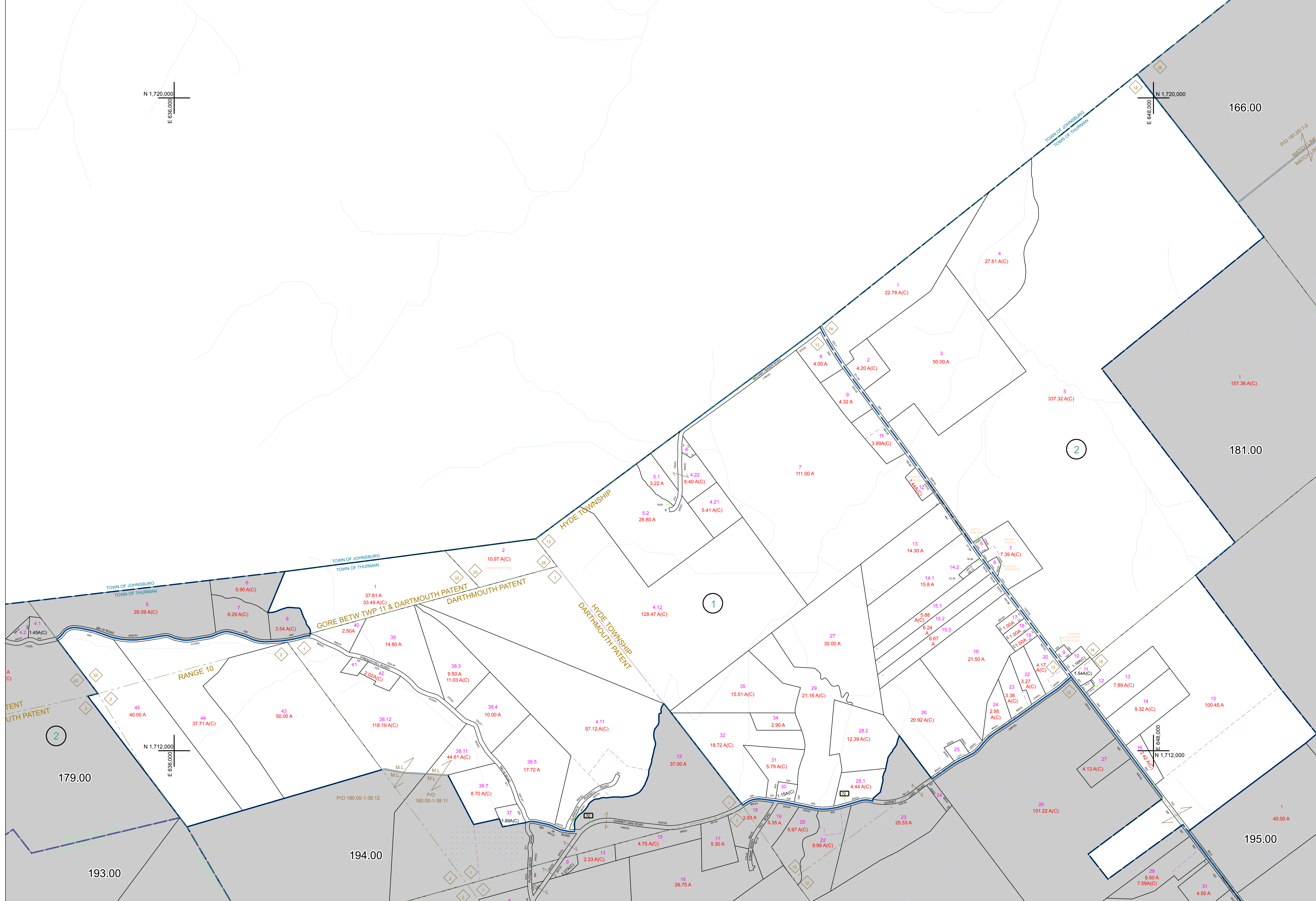


N 1,720,000
E 638,000

N 1,720,000
E 648,000

N 1,712,000
E 638,000

N 1,712,000
E 648,000



WARREN COUNTY REAL PROPERTY SERVICES
LAKE GEORGE, NEW YORK

REVISION TABLE	
DATE	MADE BY / CHANGES OR ADDITIONS
11/17/2009	B. DUBOIS
05/21/2008	EASTERN BLOCKS/ PARCEL 180.00-1-28.1 REVISED BY A RECENTLY FILED SURVEY FOR BELLER (194.00-1-23)

SPECIAL DISTRICTS	
PROPERTY LINE	---
ORIGINAL LOT LINE	---
RAILROAD	---
STREAM OR DITCH	---
ROAD OR RAILWAY BNDY	---
COUNTY LINE	---

LEGEND	
TOWN LINE	---
VILLAGE LINE	---
BLOCK LIMIT	---
GREAT LOT LINE	---
SCHOOL DISTRICT LINE	---
FIRE DISTRICT LINE	---
DNOTES COMMON OWNER	---
TAX MAP BLOCK NUMBER	---
TAX MAP PARCEL NUMBER	---
FILED PLAN LOT NUMBER	---

LEGEND	
GREAT LOT NUMBER	76 (C)
CALCULATED ACREAGE	76 A
DEED ACREAGE	226 (B)
SCALED DIMENSION	173.2
DEED DIMENSION	173.2

NORTH
COORDINATES BASED ON
NEW YORK STATE PLANE COORDINATE SYSTEM
EASTERN ZONE NAD 83

SHEET INDEX	
179.00	181.00
179.00	181.00
194.00	195.00

TAX MAP
WARREN COUNTY, NEW YORK
SCALE: 1 inch = 400 feet
DATE PRINTED: Apr 11, 2011