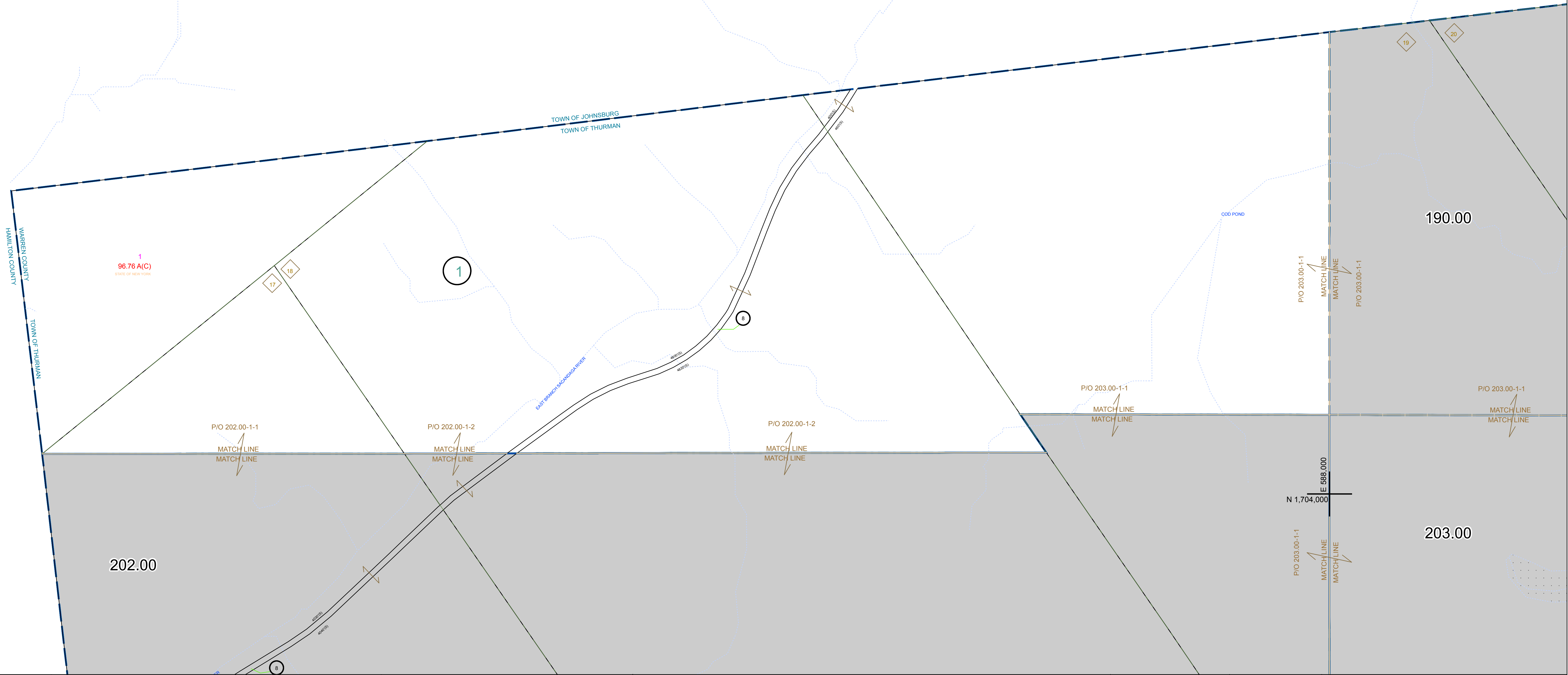


N 1,712,000
E 576,000

N 1,712,000
E 588,000

N 1,704,000
E 576,000

N 1,704,000
E 588,000



PREPARED BY:
WARREN COUNTY REAL PROPERTY SERVICES
LAKE GEORGE, NEW YORK

REVISION TABLE		
DATE	MADE BY	CHANGES OR ADDITIONS

SPECIAL DISTRICTS	

PROPERTY LINE	
ORIGINAL LOT LINE	---
RAILROAD	—+—+—+—
STREAM OR DITCH	~~~~~
ROAD OR RAILWAY BNDY	—+—+—+—
COUNTY LINE	—+—+—+—

TOWN LINE	
VILLAGE LINE	---
BLOCK LIMIT	---
GREAT LOT LINE	---
SCHOOL DISTRICT LINE	---

LEGEND	
FIRE DISTRICT LINE	---
DENOTES COMMON OWNER	---
TAX MAP BLOCK NUMBER	---
TAX MAP PARCEL NUMBER	---
FILED PLAN LOT NUMBER	---

GREAT LOT NUMBER	
CALCULATED ACREAGE	76 (C)
DEED ACREAGE	176 A
SCALED DIMENSION	226 (B)
DEED DIMENSION	173.2

COORDINATES BASED ON	
NEW YORK STATE PLANE	COORDINATE SYSTEM
EASTERN ZONE	NAD 83

SHEET INDEX	
190.00	195.00
200.00	205.00
210.00	215.00

TAX MAP	
TOWN OF THURMAN	189.00
WARREN COUNTY, NEW YORK	
SCALE: 1 inch = 400 feet	
DATE PRINTED: Apr 11, 2011	