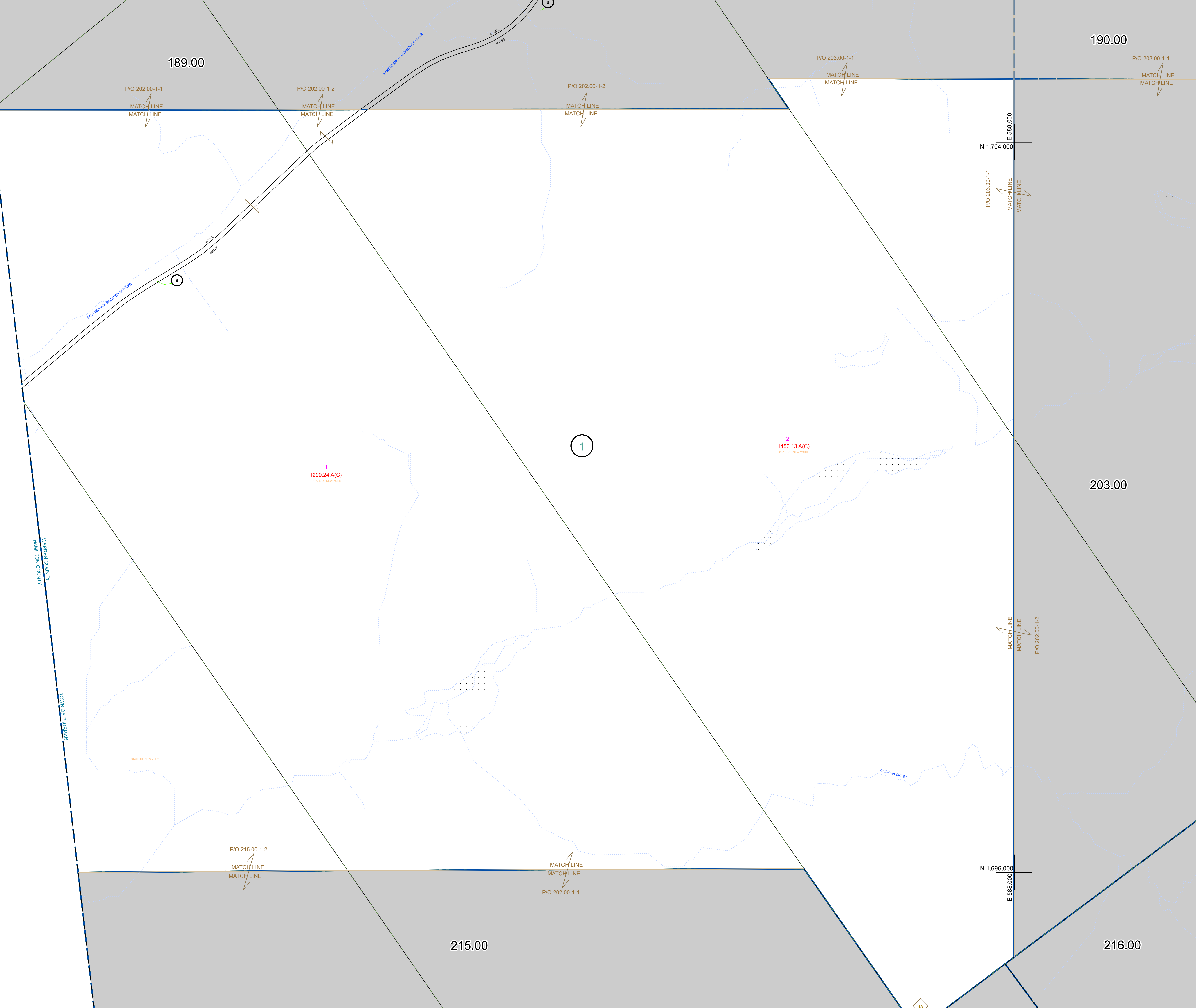



N 1,704,000
E 576,000

N 1,696,000
E 576,000





 PREPARED BY:
WARREN COUNTY REAL PROPERTY SERVICES
 LAKE GEORGE, NEW YORK

REVISION TABLE		
DATE	MADE BY	CHANGES OR ADDITIONS

SPECIAL DISTRICTS	

PROPERTY LINE		TOWN LINE		FIRE DISTRICT LINE	
ORIGINAL LOT LINE	--- ---	VILLAGE LINE	--- ---	DENOTES COMMON OWNER	---
RAILROAD	--- ---	BLOCK LIMIT	---	TAX MAP BLOCK NUMBER	7
STREAM OR DITCH	~ ~	GREAT LOT LINE	---	TAX MAP PARCEL NUMBER	76.00-1-11
ROAD OR RAILWAY BNDY	--- ---	SCHOOL DISTRICT LINE	---	FILED PLAN LOT NUMBER	(14)
COUNTY LINE	--- ---				

LEGEND	
GREAT LOT NUMBER	76 (C)
CALCULATED ACREAGE	176 A
DEED ACREAGE	226 (B)
SCALED DIMENSION	173.2
DEED DIMENSION	


 NORTH
 COORDINATES BASED ON
 NEW YORK STATE PLANE COORDINATE SYSTEM
 EASTERN ZONE NAD 83

SHEET INDEX	
189.00	190.00
203.00	202.00
215.00	216.00

TAX MAP
TOWN OF THURMAN
 WARREN COUNTY, NEW YORK
 SCALE: 1 inch = 400 feet
 DATE PRINTED: Apr 11, 2011

THIS DOCUMENT PREPARED FOR TAX PURPOSES ONLY