

N 1,696,000
E 576,000

N 1,688,000
E 576,000



PREPARED BY:
WARREN COUNTY REAL PROPERTY SERVICES
LAKE GEORGE, NEW YORK

REVISION TABLE		
DATE	MADE BY	CHANGES OR ADDITIONS

SPECIAL DISTRICTS	
PROPERTY LINE	---
ORIGINAL LOT LINE	---
RAILROAD	---
STREAM OR DITCH	---
ROAD OR RAILWAY BNDY	---
COUNTY LINE	---

LEGEND	
TOWN LINE	---
VILLAGE LINE	---
BLOCK LIMIT	---
GREAT LOT LINE	---
SCHOOL DISTRICT LINE	---
FIRE DISTRICT LINE	---
DENOTES COMMON OWNER	---
TAX MAP BLOCK NUMBER	---
TAX MAP PARCEL NUMBER	---
FILED PLAN LOT NUMBER	---

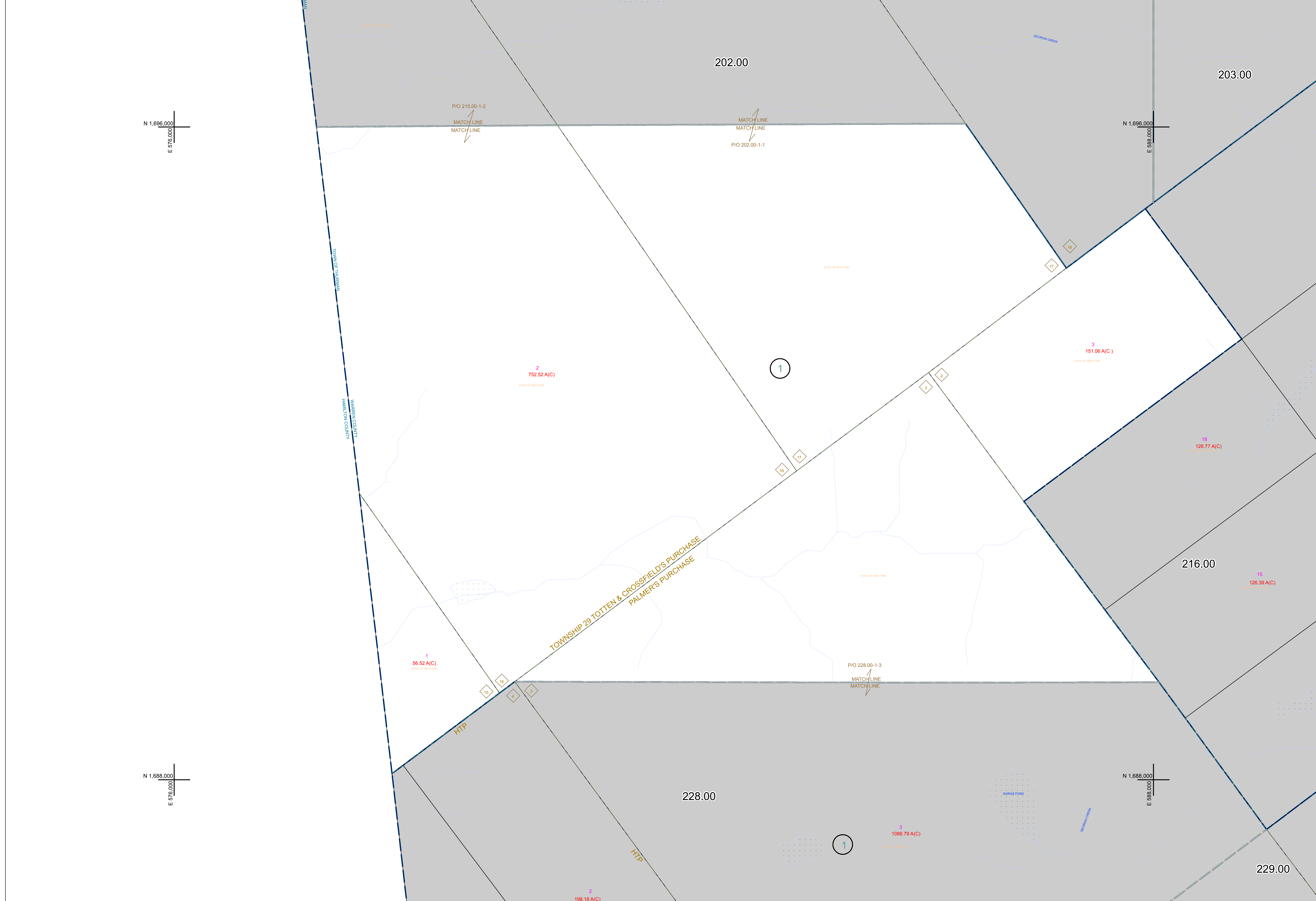
GREAT LOT NUMBER	202.00
CALCULATED ACREAGE	76 (C)
DEED ACREAGE	176 A
SCALED DIMENSION	226 (B)
DEED DIMENSION	173.2

NORTH
COORDINATES BASED ON
NEW YORK STATE PLANE COORDINATE SYSTEM
EASTERN ZONE NAD 83

SHEET INDEX	
202.00	203.00
214.00	215.00
228.00	229.00

TAX MAP
TOWN OF THURMAN
WARREN COUNTY, NEW YORK
SCALE: 1 inch = 400 feet

215.00
DATE PRINTED: Apr 11, 2011



THIS DOCUMENT PREPARED FOR TAX PURPOSES ONLY