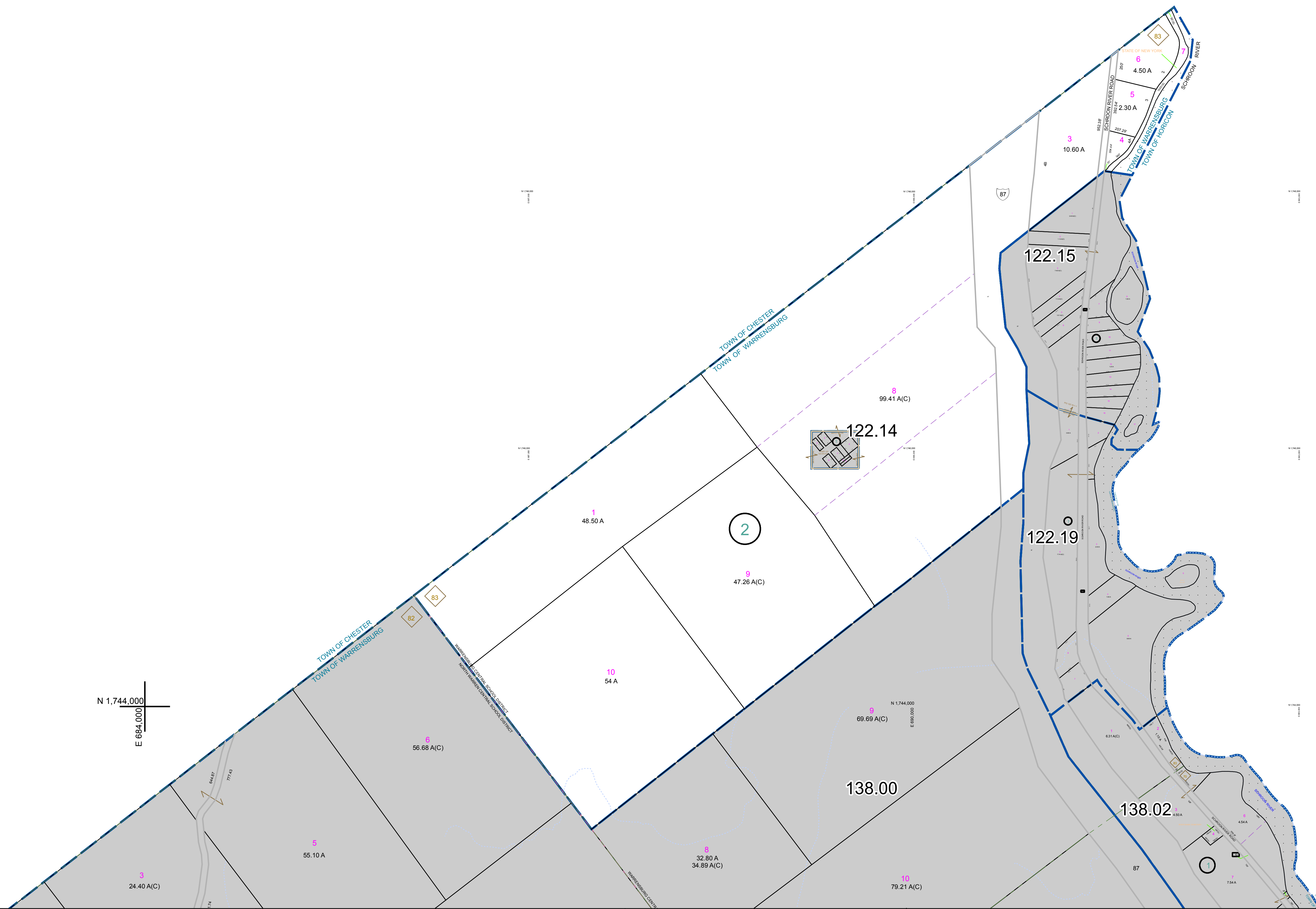


N 1,752,000  
E 684,000

N 1,752,000  
E 686,000

N 1,744,000  
E 684,000

N 1,744,000  
E 686,000



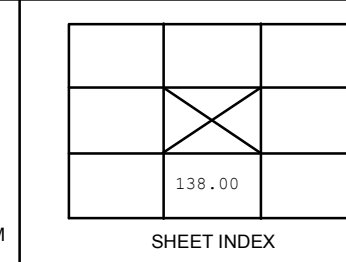
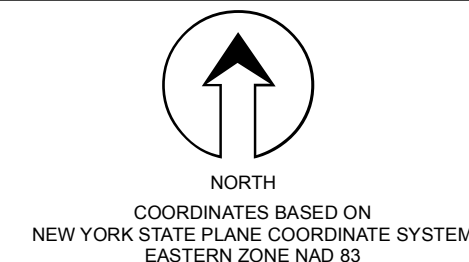
PREPARED BY:  
**WARREN COUNTY REAL PROPERTY SERVICES**  
LAKE GEORGE, NEW YORK

REVISION TABLE			
DATE	MADE BY	CHANGES OR ADDITIONS	
7/27/2010	B. BILSON	122.00-2-2 AND 122.19-1-1 MERGED INTO 122.00-2-8 (BY OWNER REQUEST) AND DELETED FROM TAX MAP.	

SPECIAL DISTRICTS	
1	48.50 A
2	47.26 A(C)
3	24.40 A(C)
4	55.10 A
5	56.68 A(C)
6	32.80 A 34.89 A(C)
7	79.21 A(C)
8	69.69 A(C)
9	90.41 A(C)
10	54 A

LEGEND	
PROPERTY LINE	SOLID LINE
ORIGINAL LOT LINE	DASHED LINE
RAILROAD	LINE WITH CROSS-TICKS
STREAM OR DITCH	WAVE LINE
ROAD OR RAILWAY BNDY	DASHED LINE WITH CROSS-TICKS
COUNTY LINE	DASHED LINE WITH CROSS-TICKS
TOWN LINE	SOLID LINE
VILLAGE LINE	DASHED LINE
BLOCK LIMIT	DASHED LINE WITH CROSS-TICKS
GREAT LOT LINE	DASHED LINE WITH CROSS-TICKS
SCHOOL DISTRICT LINE	DASHED LINE WITH CROSS-TICKS
FIRE DISTRICT LINE	DASHED LINE WITH CROSS-TICKS
DNOTES COMMON OWNER	DASHED LINE WITH CROSS-TICKS
TAX MAP BLOCK NUMBER	7
TAX MAP PARCEL NUMBER	76.00-1-11
FILED PLAN LOT NUMBER	(14)

LEGEND	
GREAT LOT NUMBER	76 (C)
CALCULATED ACREAGE	178 A
DEED ACREAGE	228 (B)
SCALED DIMENSION	173.2
DEED DIMENSION	173.2



TAX MAP  
**TOWN OF WARRENSBURG**  
WARREN COUNTY, NEW YORK

122.00