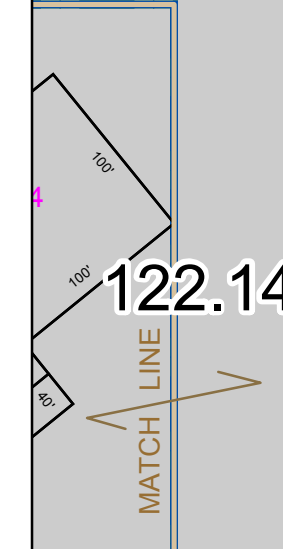
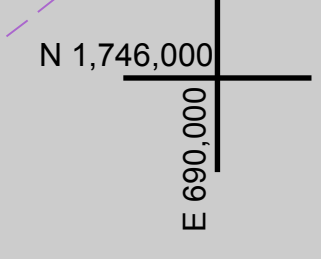


8
99.41 A(C)



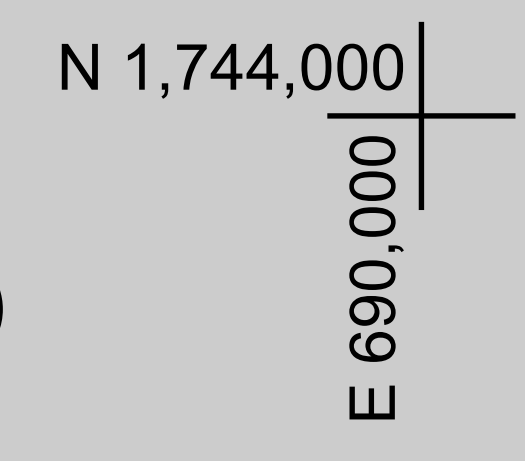
122.14



122.00

138.00

9
69.69 A(C)



122.15

P/O 122.19-1-1
MATCH LINE
MATCH LINE

1
3.90 A

1

SCHROON RIVER ROAD

9
7.74 A(C)

3
2.30 A

4
1.50 A

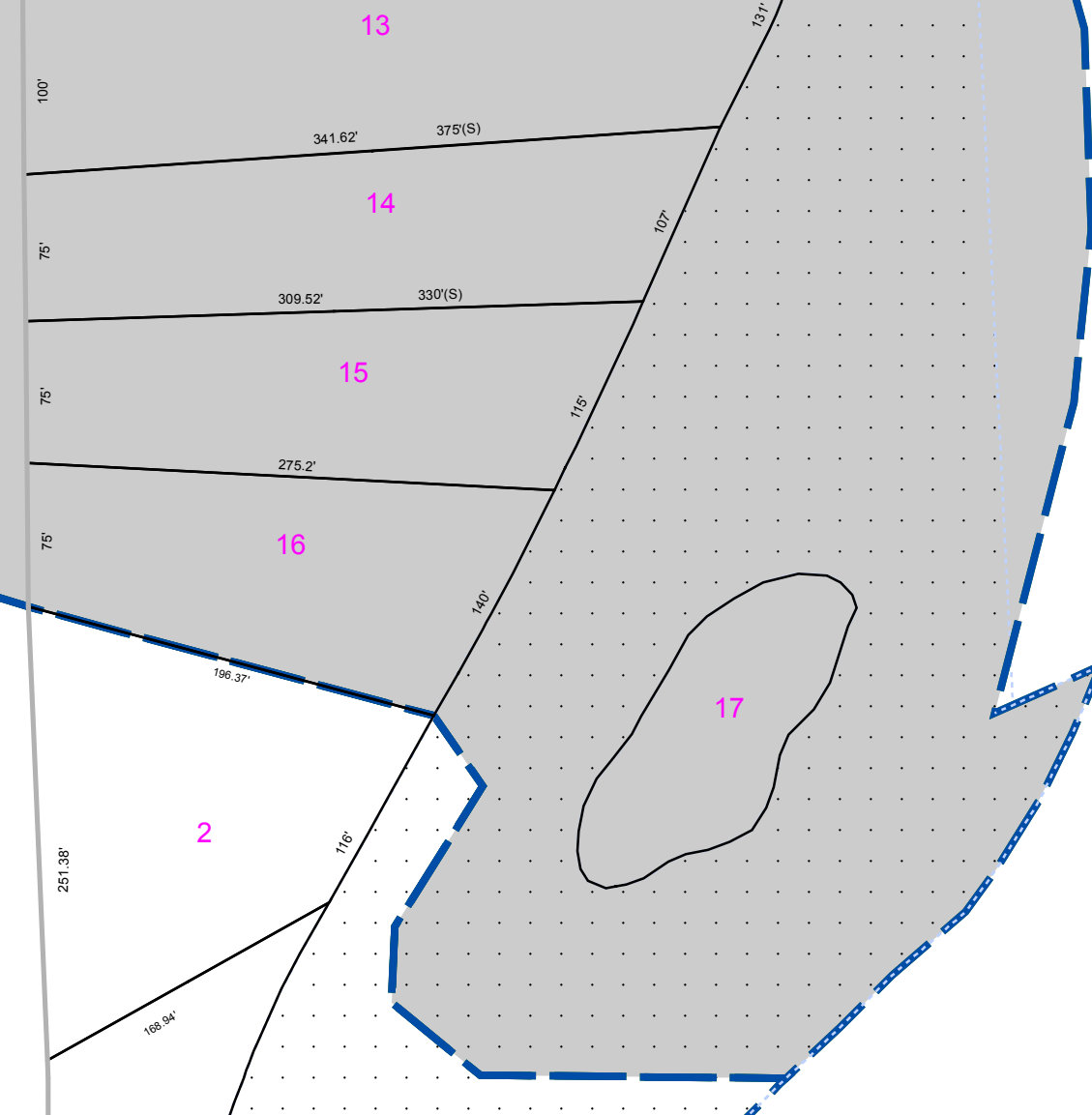
6
9.90 A

138.02

142-1

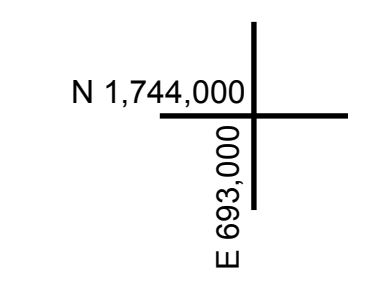
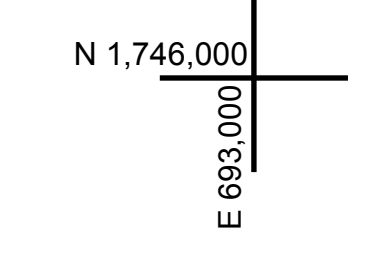
9457(S)

2



SCHROON RIVER

CONTRIBUTION TO NIMCO
INDICATED BY NIMCO



WARREN COUNTY REAL PROPERTY SERVICES
LAKE GEORGE, NEW YORK

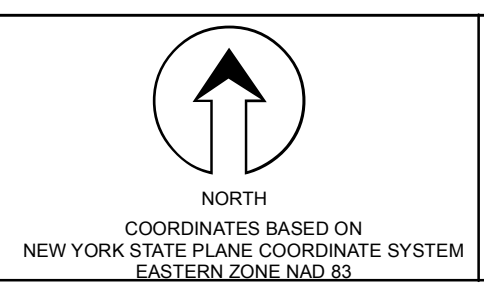
PREPARED BY:

REVISION TABLE			
DATE	MADE BY	CHANGES OR ADDITIONS	

SPECIAL DISTRICTS	
PROPERTY LINE	---
ORIGINAL LOT LINE	---
RAILROAD	---
STREAM OR DITCH	---
ROAD OR RAILWAY ENDY	---
COUNTY LINE	---

LEGEND	
TOWN LINE	---
VILLAGE LINE	---
BLOCK LIMIT	---
GREAT LOT LINE	---
SCHOOL DISTRICT LINE	---
FIRE DISTRICT LINE	---
DENOTES COMMON OWNER	---
TAX MAP BLOCK NUMBER	---
TAX MAP PARCEL NUMBER	---
FILED PLAN LOT NUMBER	---

GREAT LOT NUMBER	78 (C)
CALCULATED ACREAGE	178 A
DEED ACREAGE	228 (B)
DEED DIMENSION	173.2



SHEET INDEX		
122.14	122.15	122.00
122.00	122.00	122.00

TAX MAP
TOWN OF WARRENSBURG
WARREN COUNTY, NEW YORK

SCALE: 1 inch = 100 feet

122.19

DATE PRINTED: Apr 11, 2011

THIS DOCUMENT PREPARED FOR TAX PURPOSES ONLY