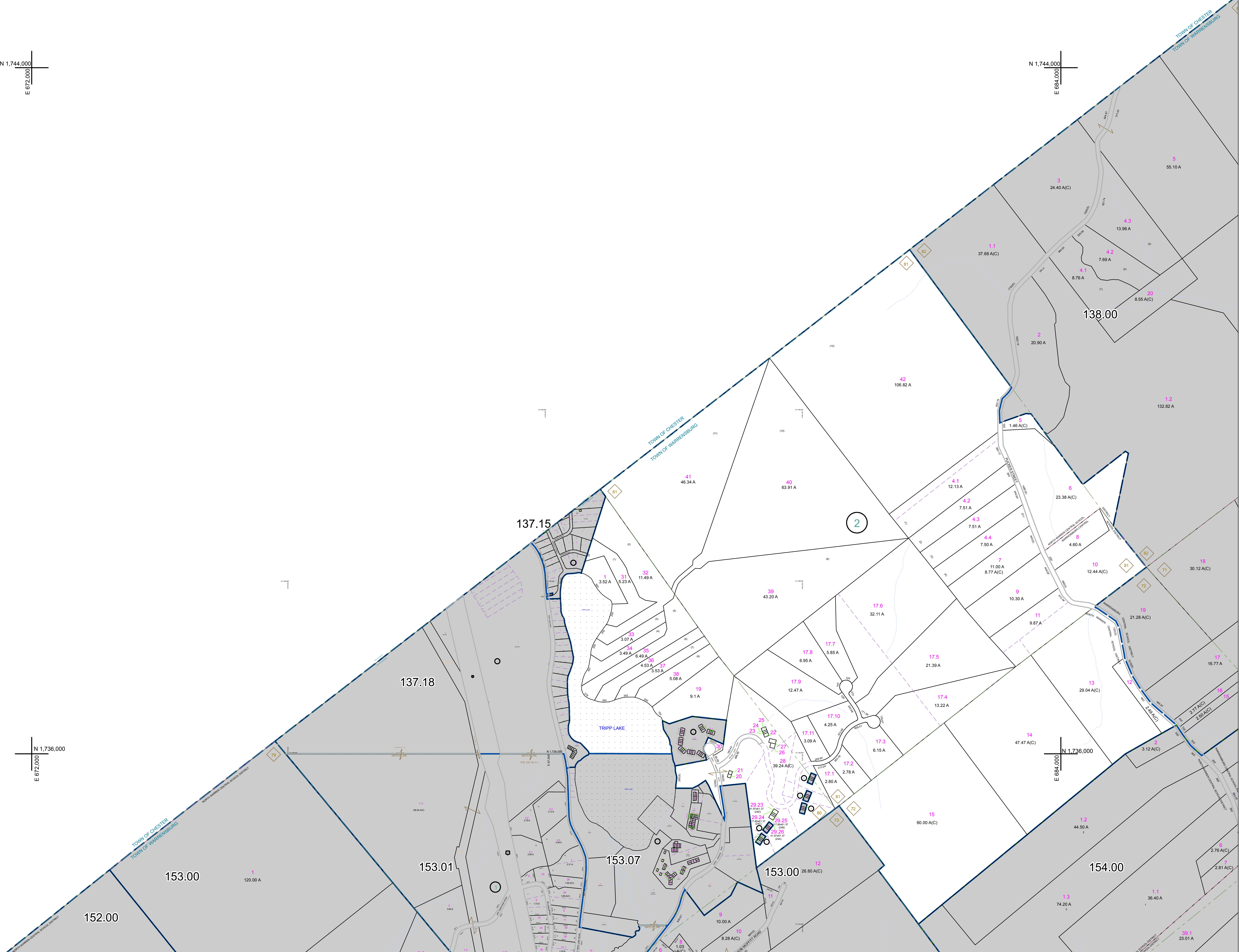


N 1,744,000  
E 672,000

N 1,744,000  
E 684,000

N 1,736,000  
E 672,000

N 1,736,000  
E 684,000



PREPARED BY:  
**WARREN COUNTY REAL PROPERTY SERVICES**  
LAKE GEORGE, NEW YORK

REVISION TABLE		
DATE	MADE BY	CHANGES OR ADDITIONS
9/28/2009	P. SIZEMORE	137.00-2-2-21-21-1 (TRIPPE POINT SUBDIVISION) NOW 137.00-2-31 PARCELS 137.00-2-32 THROUGH 43 CREATED.
11/4/2008	P. SIZEMORE	PARCELS 137.00-2-1 REMOVED INTO PARCELS 137.00-2-2 BY DEED BOOK 3412 PAGE 11 AND DELETED FROM TAX MAP.
11/4/2008	P. SIZEMORE	PARCELS 137.00-2-1 REVISED BY A RECENTLY FILED DEED FOR TRIPPE POINT, LLC.

SPECIAL DISTRICTS	
PROPERTY LINE	---
ORIGINAL LOT LINE	---
RAILROAD	---
STREAM OR DITCH	---
ROAD OR RAILWAY BNDY	---
COUNTY LINE	---

LEGEND	
FIRE DISTRICT LINE	---
DENOTES COMMON OWNER	---
TAX MAP BLOCK NUMBER	---
TAX MAP PARCEL NUMBER	---
FILED PLAN LOT NUMBER	---

GREAT LOT NUMBER	137.00
CALCULATED ACREAGE	76 (C)
DEED ACREAGE	76 A
SCALED DIMENSION	226 (B)
DEED DIMENSION	173.2

NORTH  
COORDINATES BASED ON  
NEW YORK STATE PLANE COORDINATE SYSTEM  
EASTERN ZONE NAD 83

SHEET INDEX	
137.00	137.01
137.02	137.03
137.04	137.05

TAX MAP  
**TOWN OF WARRENSBURG**  
WARREN COUNTY, NEW YORK  
137.00  
SCALE: 1 inch = 400 feet  
DATE PRINTED: Apr 11, 2011

THIS DOCUMENT PREPARED FOR TAX PURPOSES ONLY