

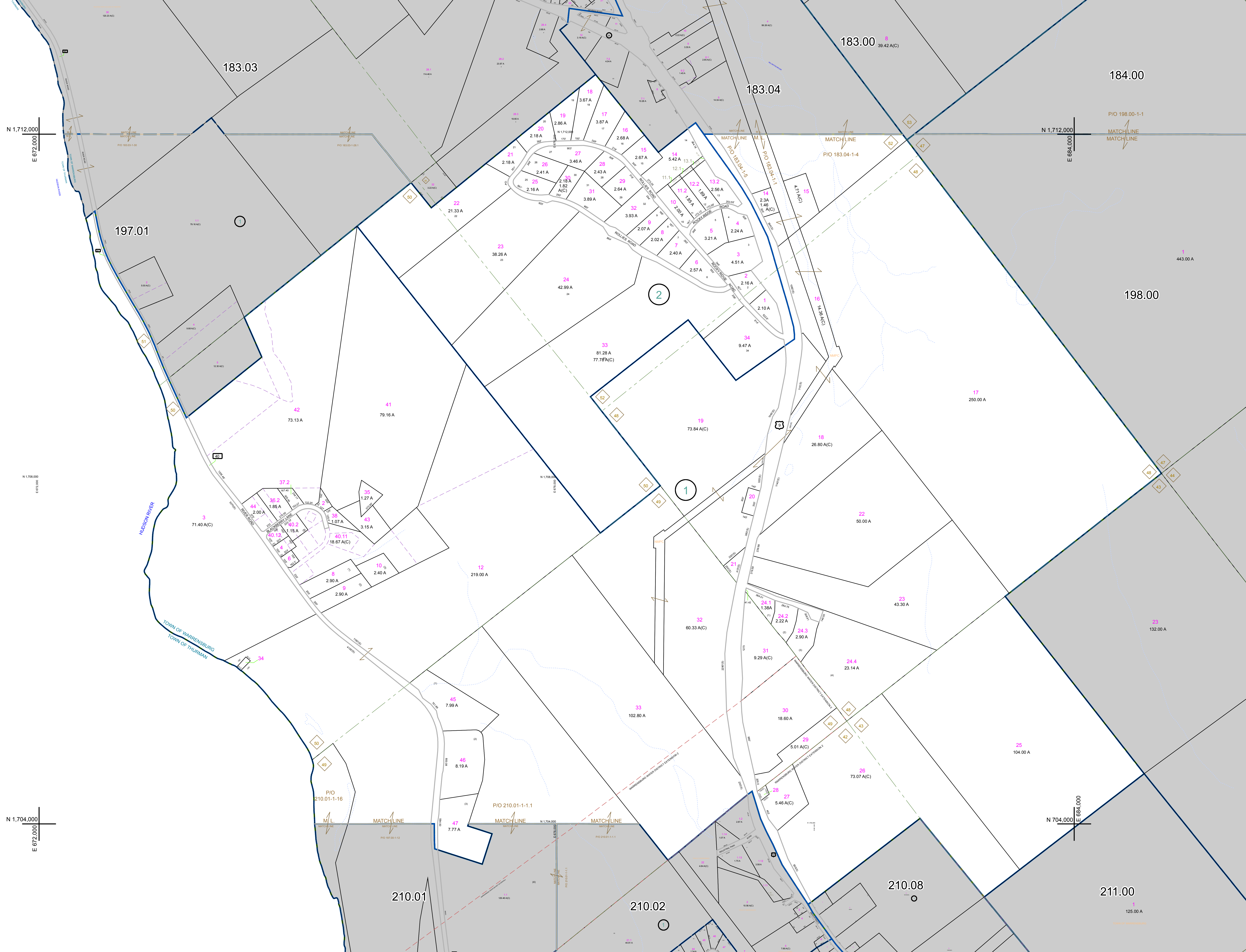
N 1,712,000  
E 672,000


N 1,712,000  
E 684,000

N 1,708,000  
E 672,000

N 1,704,000  
E 672,000

N 704,000  
E 684,000





 PREPARED BY:  
**WARREN COUNTY REAL PROPERTY SERVICES**  
 LAKE GEORGE, NEW YORK

REVISION TABLE	
DATE	MADE BY
11/17/2019	B. DIXON
CHANGES OR ADDITIONS	
SHEET 197.01-1-13 REVISED BY A RECENTLY FILED SURVEY FOR W/19-03.	

SPECIAL DISTRICTS	
PROPERTY LINE	---
ORIGINAL LOT LINE	---
RAILROAD	---
STREAM OR DITCH	---
ROAD OR RAILWAY BNDY	---
COUNTY LINE	---

LEGEND	
TOWN LINE	---
VILLAGE LINE	---
BLOCK LIMIT	---
GREAT LOT LINE	---
SCHOOL DISTRICT LINE	---
FIRE DISTRICT LINE	---
QUOTES COMMON OWNER	---
TAX MAP BLOCK NUMBER	---
TAX MAP PARCEL NUMBER	---
FILED PLAN LOT NUMBER	---

LEGEND	
GREAT LOT NUMBER	183.00
CALCULATED ACREAGE	39.42 A(C)
DEED ACREAGE	76 (C)
SCALED DIMENSION	178 A
DEED DIMENSION	226 (B)
	173.2

  
 NORTH  
 COORDINATES BASED ON  
 NEW YORK STATE PLANE COORDINATE SYSTEM  
 EASTERN ZONE NAD 83

SHEET INDEX	
183.00	184.00
197.01	198.00
210.01	211.00

TAX MAP **197.00**  
**TOWN OF WARRENSBURG**  
 WARREN COUNTY, NEW YORK  
 SCALE: 1 inch = 400 feet  
 DATE PRINTED: Apr 11, 2011

THIS DOCUMENT PREPARED FOR TAX PURPOSES ONLY