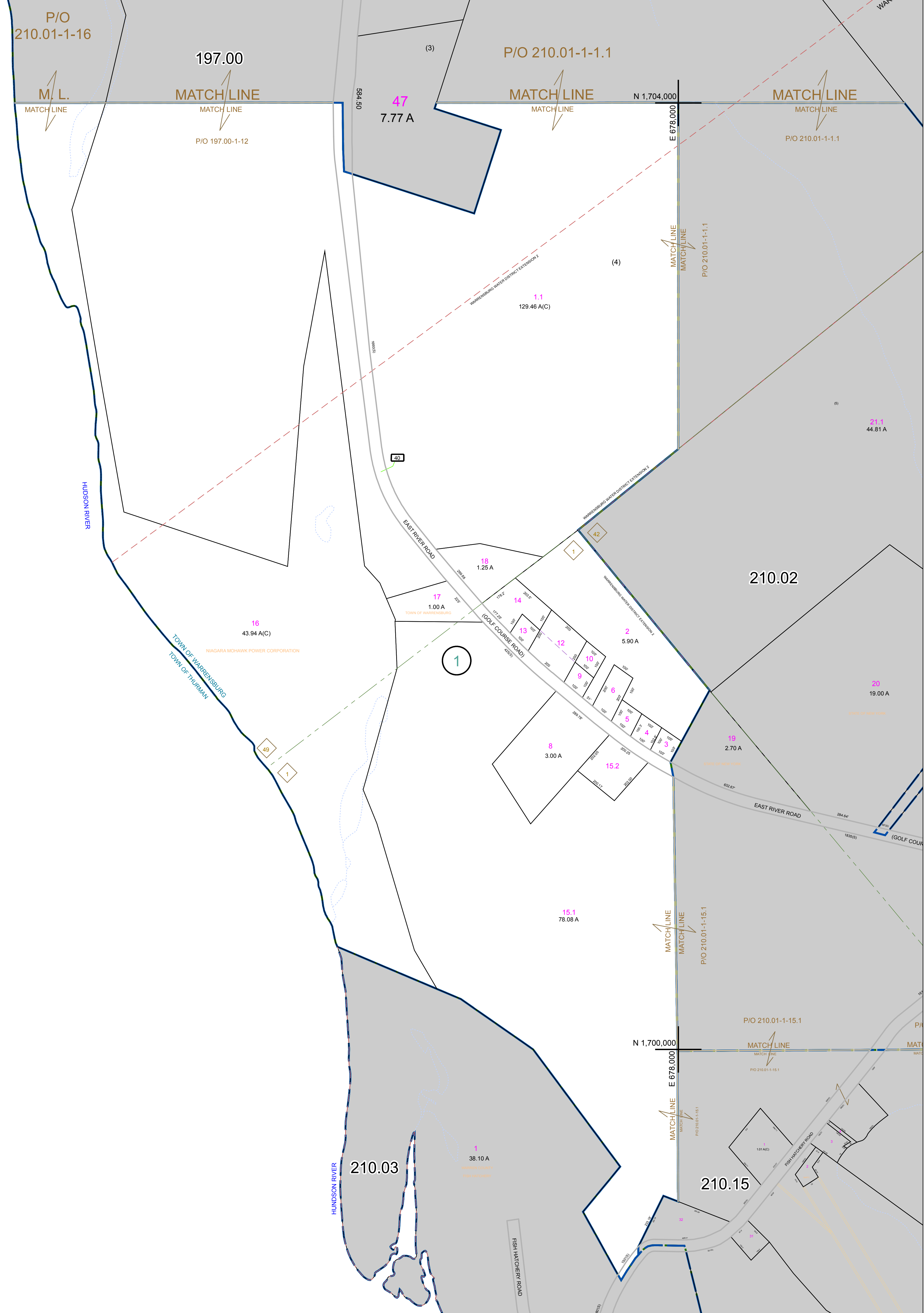


N 1,704,000
E 672,000

N 1,700,000
E 672,000



PREPARED BY:
WARREN COUNTY REAL PROPERTY SERVICES
LAKE GEORGE, NEW YORK

REVISION TABLE		
DATE	MADE BY	CHANGES OR ADDITIONS
12/27/2010	P. DIXON	PARCEL 210.01-1-15.1 DELETED (BY DEED BOOK 4355 PAGE 144) NOW 210.01-1-15.1 PARCEL 210.01-1-15.2 CREATED
2/24/2010	P. DIXON	210.01-1-11 MERGED INTO 210.01-1-12 (BY OWNER REQUEST DATED 2/23/10) AND DELETED FROM TAX MAP.
2/2/2010	P. DIXON	RECTANGULAR BOUNDARY OF PARCELS 210.01-1-15 REVISED BY A RECTANGULAR BOUNDARY FOR PARCELS (210.01-1-15).

SPECIAL DISTRICTS	
PROPERTY LINE	---
ORIGINAL LOT LINE	---
RAILROAD	---
STREAM OR DITCH	---
ROAD OR RAILWAY BNDY	---
COUNTY LINE	---

LEGEND	
TOWN LINE	---
VILLAGE LINE	---
BLOCK LIMIT	---
GREAT LOT LINE	---
SCHOOL DISTRICT LINE	---
FIRE DISTRICT LINE	---
DENOTES COMMON OWNER	---
TAX MAP BLOCK NUMBER	---
TAX MAP PARCEL NUMBER	---
FILED PLAN LOT NUMBER	---

GREAT LOT NUMBER	17
CALCULATED ACREAGE	76 (C)
DEED ACREAGE	76 A
SCALED DIMENSION	226 (B)
DEED DIMENSION	173.2

NORTH
COORDINATES BASED ON
NEW YORK STATE PLANE COORDINATE SYSTEM
EASTERN ZONE NAD 83

SHEET INDEX	
210.01	210.02
210.03	210.04

TAX MAP
TOWN OF WARRENSBURG
WARREN COUNTY, NEW YORK
SCALE: 1 inch = 200 feet
DATE PRINTED: Apr 11, 2011

THIS DOCUMENT PREPARED FOR TAX PURPOSES ONLY