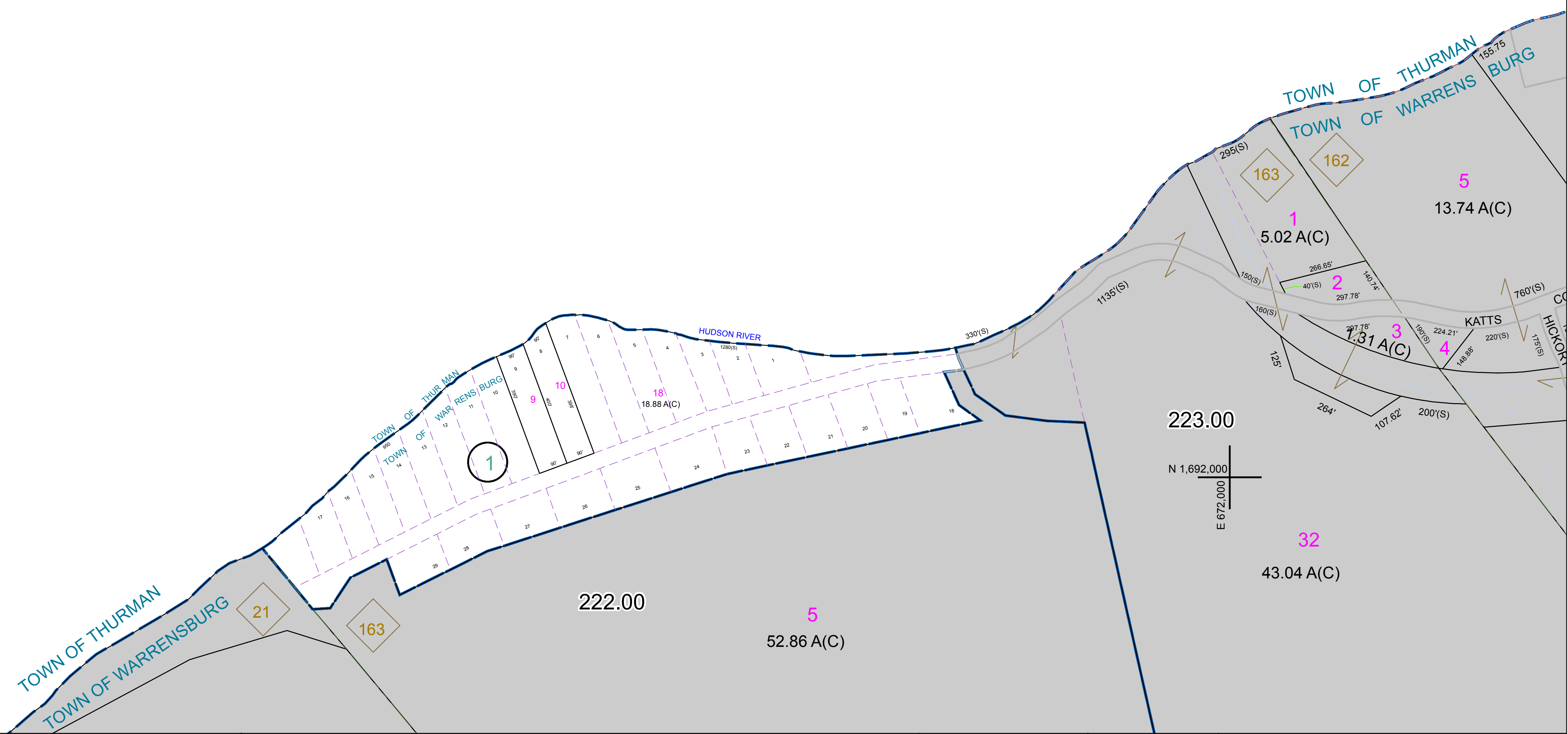


N 1,696,000  
E 672,000

N 1,696,000  
E 672,000

N 1,692,000  
E 672,000



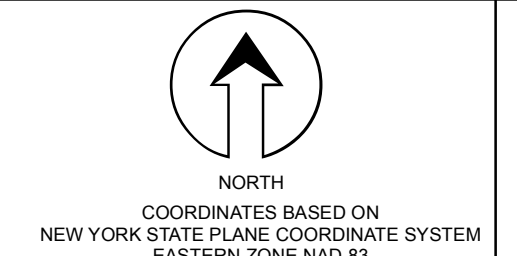
PREPARED BY:  
**WARREN COUNTY REAL PROPERTY SERVICES**  
LAKE GEORGE, NEW YORK

REVISION TABLE		
DATE	MADE BY	CHANGES OR ADDITIONS

SPECIAL DISTRICTS	

PROPERTY LINE		TOWN LINE		FIRE DISTRICT LINE	
ORIGINAL LOT LINE	---	VILLAGE LINE	---	DENOTES COMMON OWNER	---
RAILROAD	---	BLOCK LIMIT	---	TAX MAP BLOCK NUMBER	---
STREAM OR DITCH	---	GREAT LOT LINE	---	TAX MAP PARCEL NUMBER	---
ROAD OR RAILWAY BNDY	---	SCHOOL DISTRICT LINE	---	FILED PLAN LOT NUMBER	---
COUNTY LINE	---				

LEGEND	
GREAT LOT NUMBER	78 (C)
CALCULATED ACREAGE	178 A
DEED ACREAGE	222 (B)
DEED DIMENSION	173.2



SHEET INDEX	
222.00	223.00
223.00	224.00

TAX MAP  
**TOWN OF WARRENSBURG**  
WARREN COUNTY, NEW YORK

222.02  
SCALE: 1 inch = 200 feet  
DATE PRINTED: Apr 11, 2011