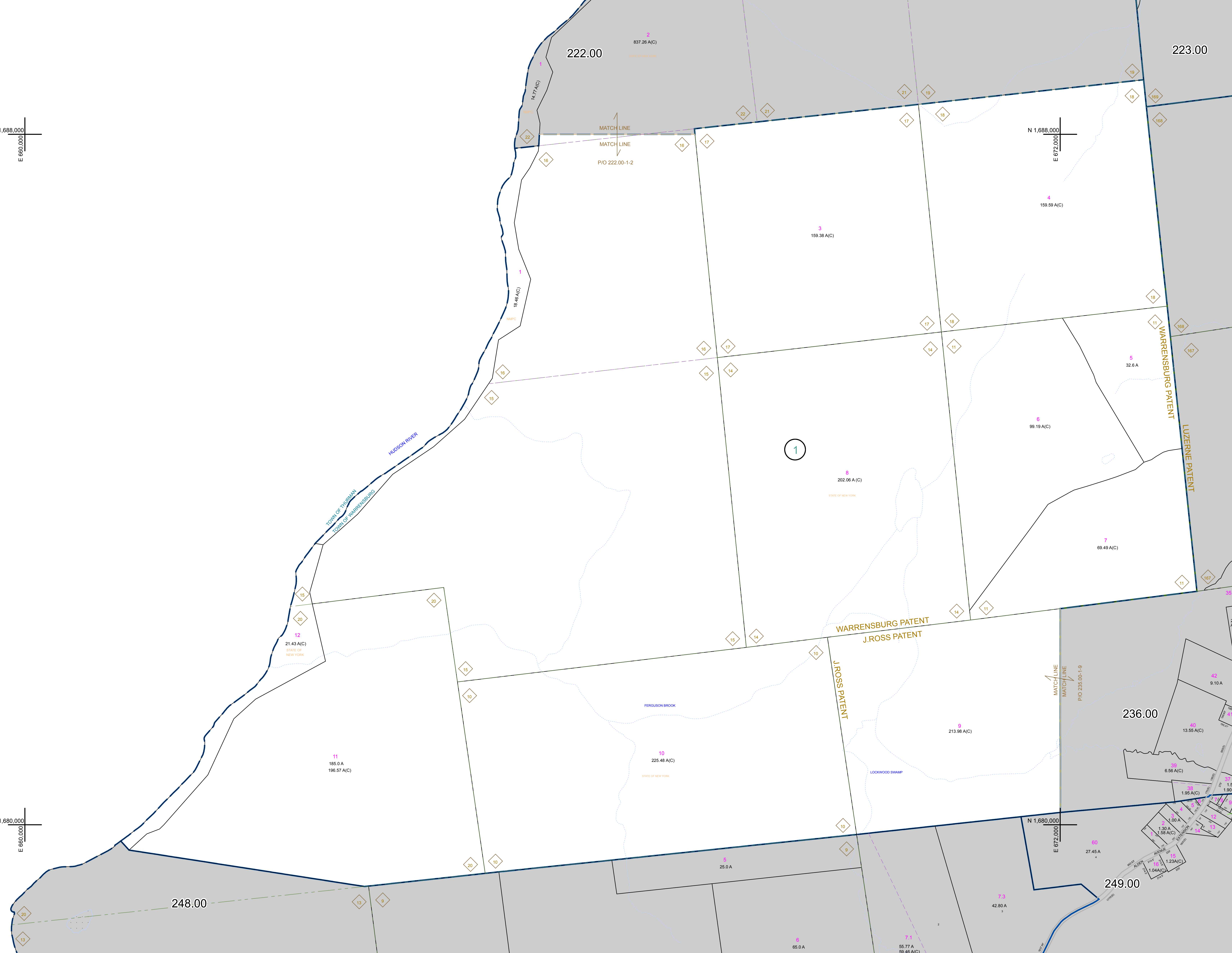


N 1,688,000
E 660,000

N 1,680,000
E 660,000



PREPARED BY:
WARREN COUNTY REAL PROPERTY SERVICES
LAKE GEORGE, NEW YORK

REVISION TABLE		
DATE	MADE BY	CHANGES OR ADDITIONS
3/29/2019	P. DIXON	EASTERLY BOUNDARY OF PARCELS 219, 00-1-1-9 REVISED BY A RECENTLY FILED SURVEY FOR OLDER (236, 00-1-09)

SPECIAL DISTRICTS	
PROPERTY LINE	---
ORIGINAL LOT LINE	---
RAILROAD	---
STREAM OR DITCH	---
ROAD OR RAILWAY BNDY	---
COUNTY LINE	---

LEGEND	
TOWN LINE	---
VILLAGE LINE	---
BLOCK LIMIT	---
GREAT LOT LINE	---
SCHOOL DISTRICT LINE	---
FIRE DISTRICT LINE	---
DENOTES COMMON OWNER	---
TAX MAP BLOCK NUMBER	7
TAX MAP PARCEL NUMBER	76.00-1-11
FILED PLAN LOT NUMBER	(14)

LEGEND	
GREAT LOT NUMBER	76 (C)
CALCULATED ACREAGE	176 A
DEED ACREAGE	226 (B)
SCALED DIMENSION	173.2
DEED DIMENSION	

NORTH
COORDINATES BASED ON
NEW YORK STATE PLANE COORDINATE SYSTEM
EASTERN ZONE NAD 83

SHEET INDEX	
222.00	223.00
248.00	249.00

TAX MAP
TOWN OF WARRENSBURG
WARREN COUNTY, NEW YORK
SCALE: 1 inch = 400 feet
DATE PRINTED: Apr 11, 2011

THIS DOCUMENT PREPARED FOR TAX PURPOSES ONLY