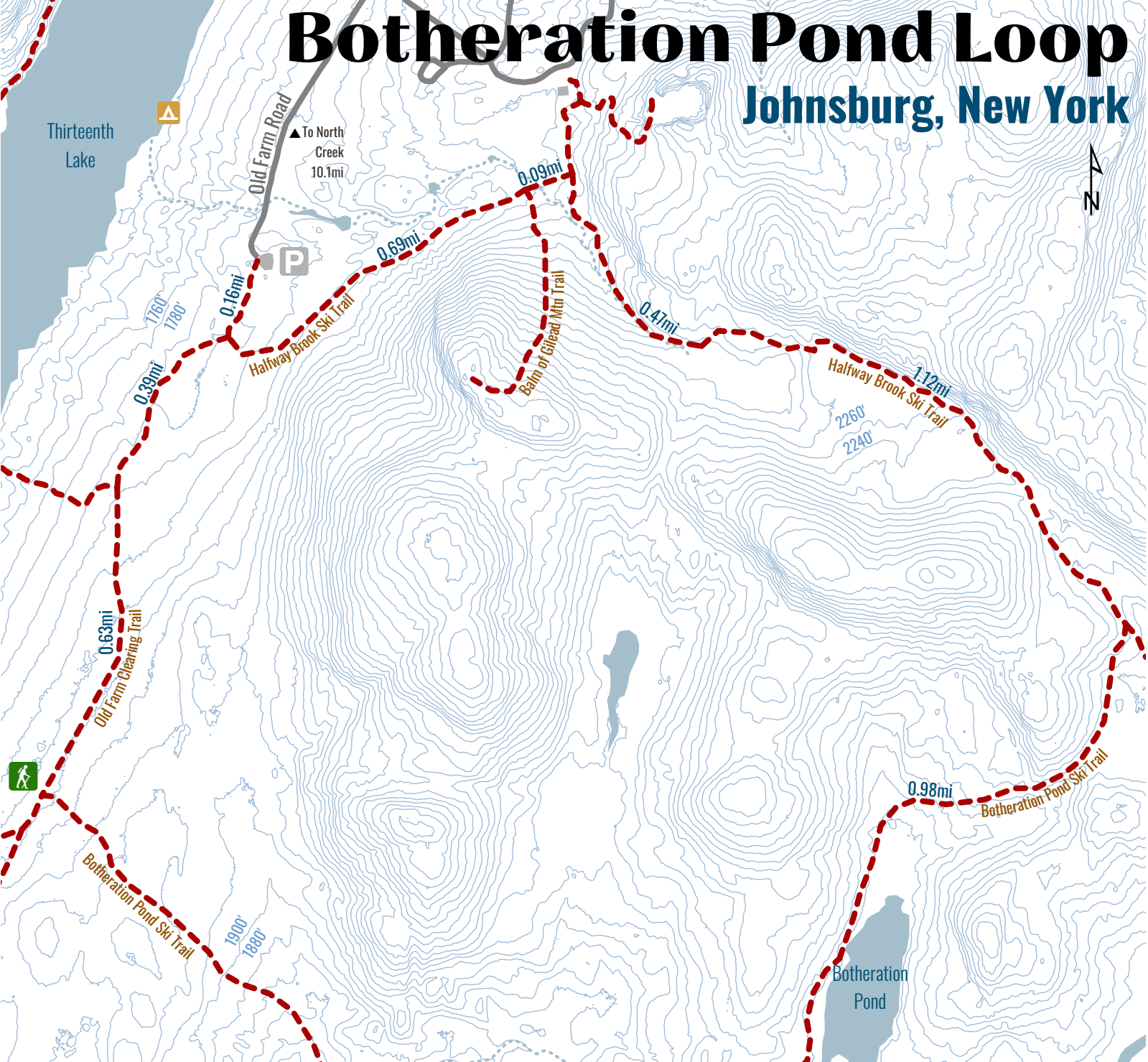


Botheration Pond Loop

Johnsburg, New York



Difficulty: intermediate
Length: 6.89 mi loop
Time to Complete: 4.5 hours
Trailhead Coordinates: -74.125, 43.689

Trail Notes: This is an intermediate level loop past Botheration Pond best suited for backcountry skiing.

Directions and Parking: Take the Northway to Exit 23. Turn left and then turn right onto US9. Continue until you reach State Route 28. Turn left onto State Route 28 for approximately 21.2mi and turn left onto 13th Lake Rd. Take 13th Lake Rd to Old Farm Rd. Parking is at the dead end of the road. The trailhead is about 1 mi from the parking area.

-  Campsite
-  Parking
-  Trailhead

