

Instructions for ArcGIS Field Maps App for Collecting Data with a Mobile Device

Please note that the screenshots below are from an IOS(Apple) device, but the instructions for an Andriod device are more or less the same. Call or email Amanda Beck at 518-761-6431 or becka@warrencountyny.gov OR Sara Frankenfeld at 518-761-6398 or frankenfelds@warrencountyny.gov . Thank you.

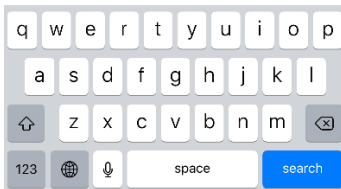
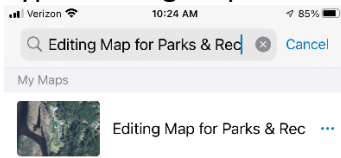
Step 1: If you have not already done so, download the ArcGIS Field Maps app onto your device. Open up the App Store or Play Store and type “ArcGIS Field Maps” into the search bar. Click where it says download and allow any services it asks for, ex. Location services, camera, etc.



Step 2: After the app has downloaded onto your device, open it up. It will bring you to a log in screen. Click on the first option called “Sign In with ArcGIS Online” and use the credentials that were given to you and click “Sign In”.



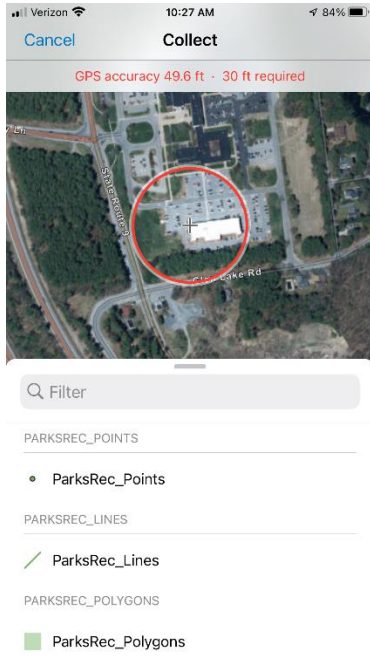
Step 3: Next, it will bring you to a screen that shows the list of maps available to your account. Type “Editing Map for Parks & Rec” into the search bar at the top. Click on the map to open it.



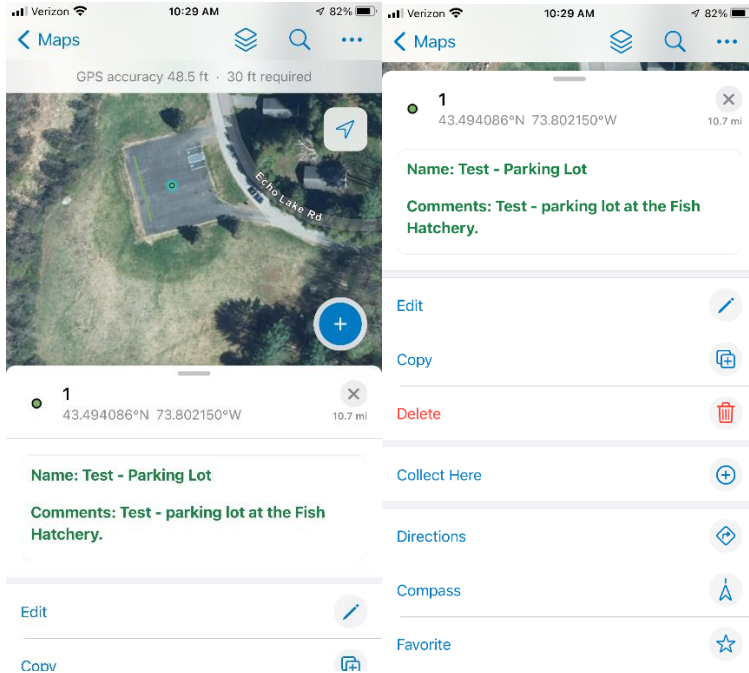
Step 4: If you have location services on, the map will open to the location you are on the map. To add data, click on the blue (+) sign in the lower right corner of the screen.



Step 5: Choose which feature you would like to collect data for (points, lines, or polygons). After inputting the associated data, click on Submit. The data is now in the map.

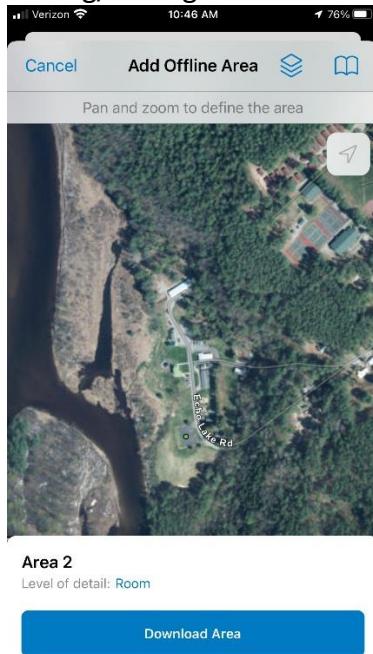


Step 6: To edit already existing data, click on the feature on the map. Choose edit and change any data that you need to. When finished editing, click on "Update".



For collecting data in an **offline area**, go back to step 3 and click on the three blue dots shown to the right of the map. Click on “Add Offline Area”. Make sure the area you will be collecting data in is viewable on the screen. Click on “Download Area”. This will allow the downloaded area to be downloaded onto your device when are in an out-of-service area. NOTE: Be sure to do this BEFORE heading out into the field or out-of-service area.

Step 1: To edit data in the downloaded area, click on the map to open it and start editing/adding data the same way you would normally.



Step 2: When you are finished editing/adding data to that downloaded area, after returning to an in-service area or back to the office, be sure to click on the “Sync” icon at the top of the screen.



If you decide that you are finished with that particular Downloaded Area, you can click on the three blue dots next to the Area and click “Remove Area”.

