

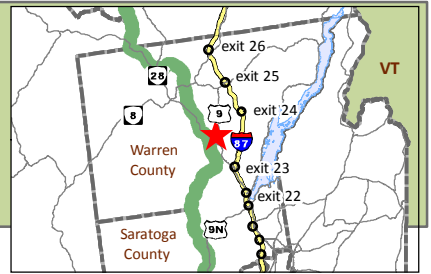


First Wilderness Heritage Corridor

Hiking Trails

Ben Wood Mountain

SUNY ESF PACK DEMONSTRATION FOREST - TOWN OF WARRENSBURG, NY



Difficulty: Easy; family friendly
Length: 2 miles roundtrip
Time to Complete: 1-2 hours
Trailhead Coordinates: -73 48.49 43 34.03
Elevation Gain: 364'
Trail Notes:



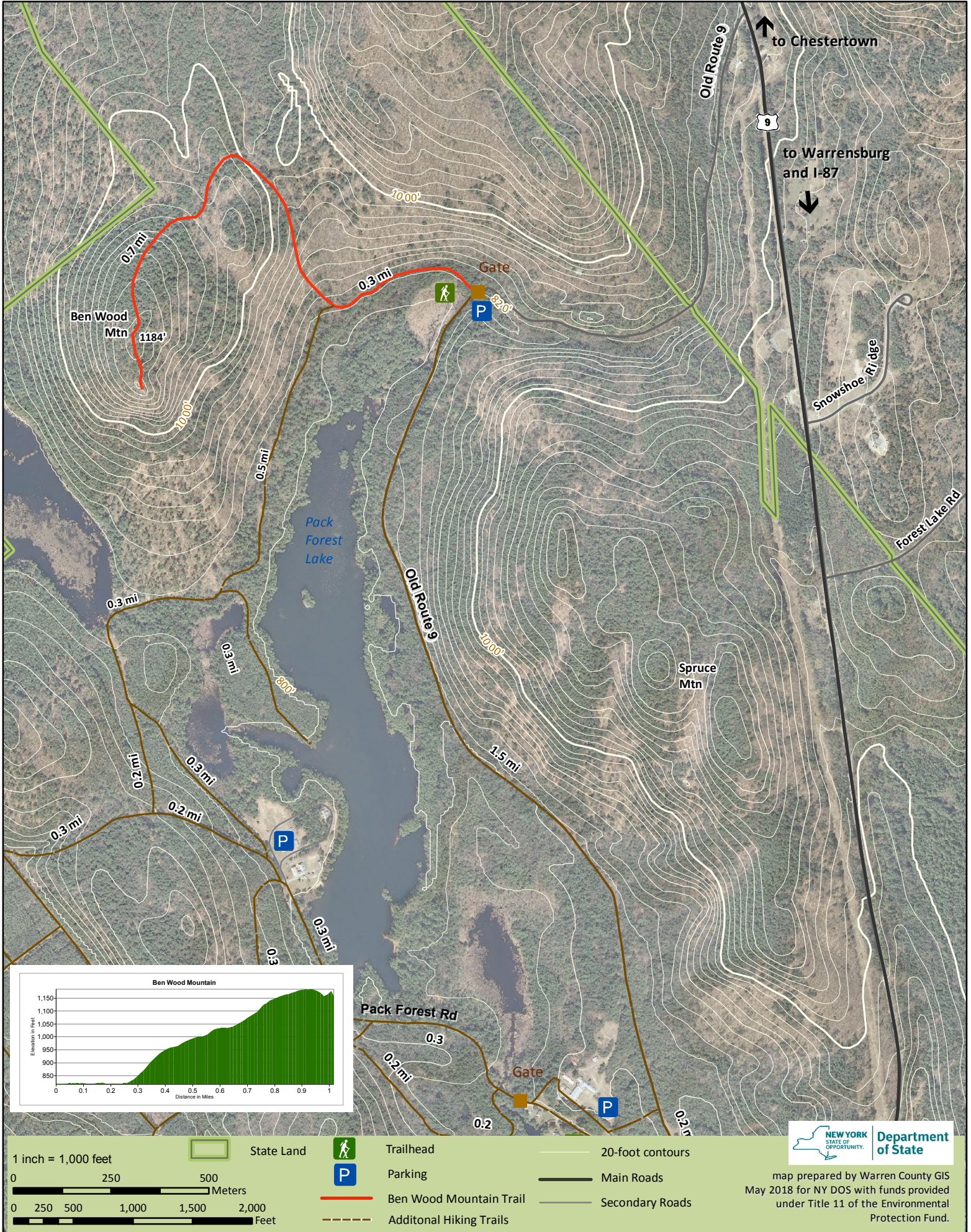
This is an easy hike along a logging road. The summit is wooded, but continuing on a short path south of the summit leads to a viewpoint with vistas of the peaks of Thurman and Warrensburg to the south. Open rock ledges provide a perfect picnic spot. The trail is not marked, but it is wide and easy to follow.

Directions and Parking:

Take the Northway to Exit 23. Turn left and then right onto US9. Go through Warrensburg, past the intersection with NYS 28. The entrance to Pack Forest will be 1/2 mile after this intersection on the left, but continue on US9 past the entrance for approximately 2.2 miles to Old Route 9. Turn left and continue for approximately 0.9 miles. The road is old and fairly rutted. Park across from the locked gate on the right. The gate is the beginning of the trail.

Things to Do Nearby:

Pack Forest contains many other recreational opportunities, including paddling, fishing, picknicking and mountain biking.



map prepared by Warren County GIS
 May 2018 for NY DOS with funds provided
 under Title 11 of the Environmental
 Protection Fund.