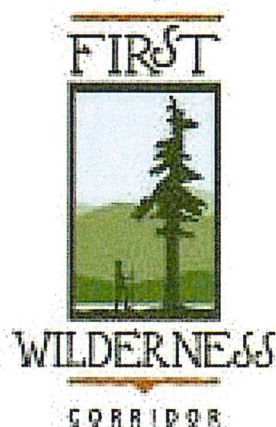


First Wilderness Scenic Byway

Corridor Management Plan



Prepared by:

Adirondack North Country Association, Saranac Lake, New York
Ann Ruzow Holland, Ph.D., Community Planning Advisor, Willsboro, New York
Warren County Planning Department, Lake George, New York

2012

This project, administered by the New York State Department of Transportation and managed by the Adirondack North Country Association, was funded by a grant to the New York State Scenic Byways Program through the Federal Highway Administration and the Transportation Equity Act for the 21st Century.

First Wilderness Scenic Byway

- Byways Program created by the NYS State legislature in 1992 and guided by an appointed Scenic Advisory Board
- Parallels the National Scenic Byway Program which provides funds for projects within all 50 states for roadways which receive this designation at the federal or state level
- Program intent is to identify roads with exceptional traveling experiences
- Enhance tourism and business development
- Designated Byways provide a platform for participation in other planning initiatives, such as Department of State's Local Waterfront Revitalization Program
- New York's North Country (north of the NYS Thruway) has the largest number of Byways – 15.

First Wilderness Scenic Byway

- 2007 - Adirondack North Country Association (ANCA) receives NYS DOT funding to prepare a Corridor Management Plan for the existing 40-mile Dude Ranch Trail Scenic Byway. In 1984, NYS designated this trail as part of States' scenic byway trail system.
- The federal government required all byway routes designated in the 1980's and 1990's to complete a Corridor Management Plan in order for Byway communities to qualify for available funding from the National Scenic Byway Program. Funding was provided by the Federal Highway Administration and the Transportation Equity Act through the NYS Department of Transportation.
- 2010 – Warren County Planning Department received funding from ANCA to complete a Byway Corridor Management Plan (CMP). The completed First Wilderness Corridor Plan documents and the prior involvement of local action committees provide the background information for the CMP.

First Wilderness Scenic Byway

- Elements of the Plan:
- 1.) Describes the Byway and identifies its resources
- 2.) Contains goals and strategies that support economic development through the promotion of tourism.
- 3.) Contains a Vision Statement, Theme and Intrinsic Qualities
- 4.) Emphasizes the preservation of the Byways' distinctive qualities and character concerning natural, historical, cultural and recreational resources.
- 5.) Recognizes the public participation process to reflect community-based interests and intentions through Plan implementation.

First Wilderness Scenic Byway

- 6.) Supports the local community “vision”, regional initiatives and the accomplishment of shared goals throughout the Byway.
- 7.) Establishes a foundation for self-directed initiatives within Byway communities.
- 8.) Identifies recommendations and enhancements for the Byway.

First Wilderness Scenic Byway

- **Recommendations and proposed changes:**
- 1.) Federal scenic byway guidelines require Byway themes to be based on public intrinsic resources rather than private commercial enterprises.
-
- 2.) The existing Dude Ranch Trail relied on the existence of privately owned, equestrian centered facilities and resorts that were the a “frontier-based” visitor experience that achieved a peak in the in the 1950’s and 1960’s within a limited geographical area.
- 3.)The “frontier-like” theme was broadened to emphasize the Adirondack wilderness and the trade-based outposts in the communities along the Hudson River.
- 4.) Warren County and its First Wilderness Heritage Corridor communities established this theme through the Local Waterfront Revitalization Program that appropriately reflects more than 400 years of history for this portion Hudson River corridor.

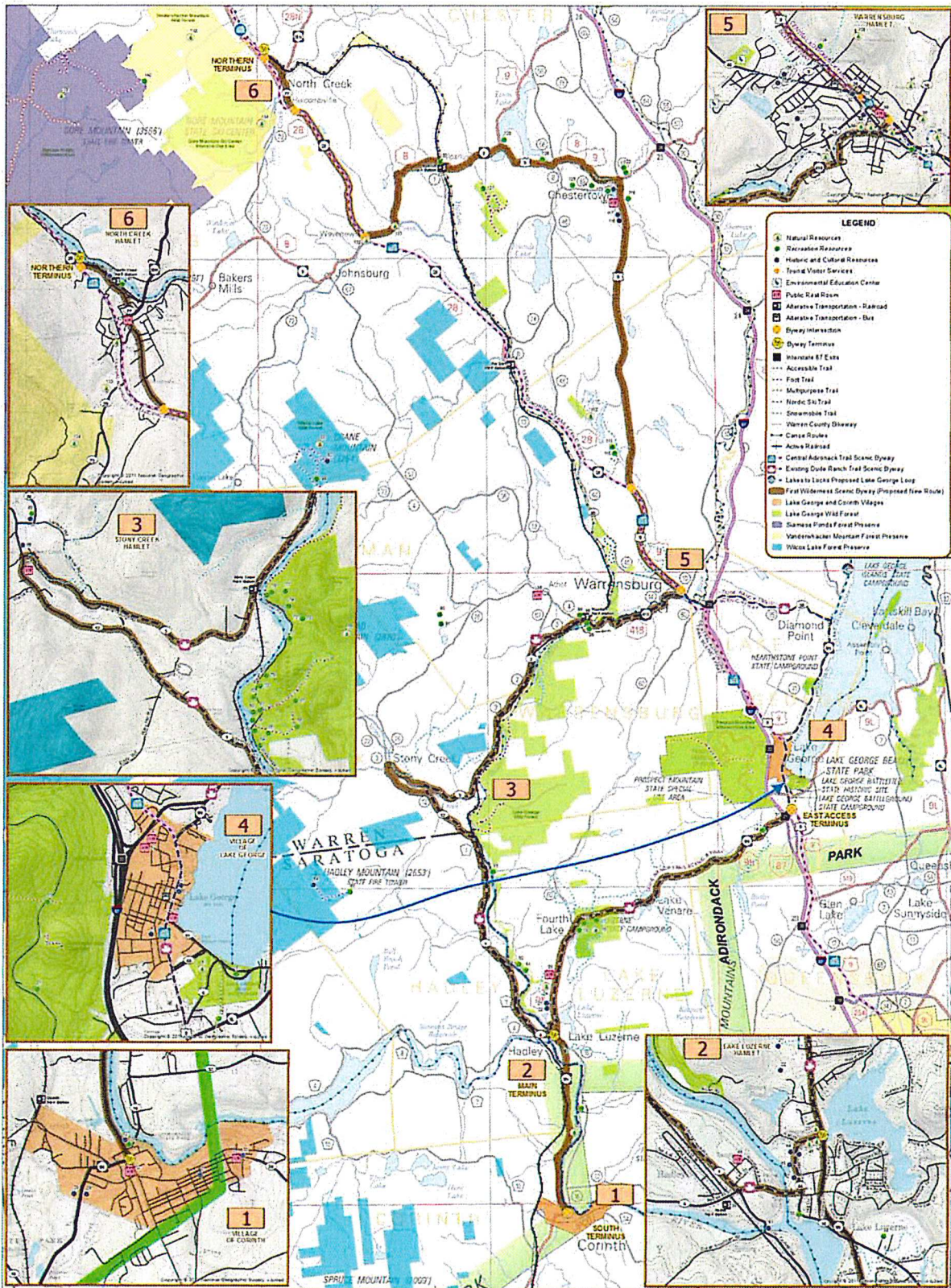
First Wilderness Scenic Byway

- **Recommendations and proposed changes:**
- 5.) The Adirondacks were one of the first places that American culture defined “wilderness” as a distinguishing feature of the environment different from agrarian and urbanized landscapes.
- 6.) A Byway name change and route expansion were incorporated into the development of the CMP.
- 7.) The Warren County Board of Supervisors through Resolution No.441 of 2006 authorized the renaming and incorporation of the Dude Ranch Trail into the planning corridor known as the First Wilderness Heritage Corridor.

First Wilderness Scenic Byway

Specifics on the First Wilderness Scenic Byway

- Involves 8 Warren County and 3 Saratoga County communities
- 65.5 miles in length (Dude Ranch Trail was 40.69 miles)
- Northern point is North Creek – Southern point is the Village of Corinth-Eastern point is the Village of Lake George.
- Overlaps the Central Adirondack Trail (4.66 miles)
- Adjacent to the proposed Lake George Loop of the Lakes to Locks Passage - All American Road
- Presentation to the NYS Scenic Advisory Board in January 2013
- Official Byway designation anticipated in 2013



This project, administered by the New York State Department of Transportation and managed by the Adirondack North Country Association, was funded by a grant to the New York State Scenic Byways Program through the Federal Highway Administration and the Transportation Equity Act for the 21st Century.

First Wilderness Scenic Byway

0 1 2 4 Miles

DATA SOURCES:
 Warren and Saratoga Counties
 Planning, Real Property Dept's
 NYS DEC, OCS, DOT, SPO
 Primary Base Map: NYS OCS 2011
 Inset Base Map: ESRI USA Topo

Map prepared by Warren County
 Planning Department in January 2012

Graphic information prepared by the
 New York State Office of Cyber Security, 2011

IMPORTANT WRITING AND DISCLAIMERS:
 THIS MAP AND INFORMATION IS PROVIDED "AS IS" AND WARREN COUNTY MAKES NO WARRANTIES OR GUARANTEES, EXPRESS OR IMPLIED, INCLUDING MERCHANTABILITY, FITNESS FOR A PARTICULAR PURPOSE, OR ACCURACY. THE USER ASSUMES ALL RISK AND RESPONSIBILITY FOR ANY DAMAGE OR LOSS OF DATA. THIS MAP IS SUPPLEMENTARY TO THE INFORMATION PROVIDED BY THE OFFICIAL RECORDS OF THE STATE OF NEW YORK.