

CLARK PATTERSON LEE
 DESIGN PROFESSIONALS
 205 ST PAUL STREET, SUITE 500
 ROCHESTER, NEW YORK 14604
 TEL (800) 274-9000
 FAX (585) 454-7818
 www.clarkpatterson.com

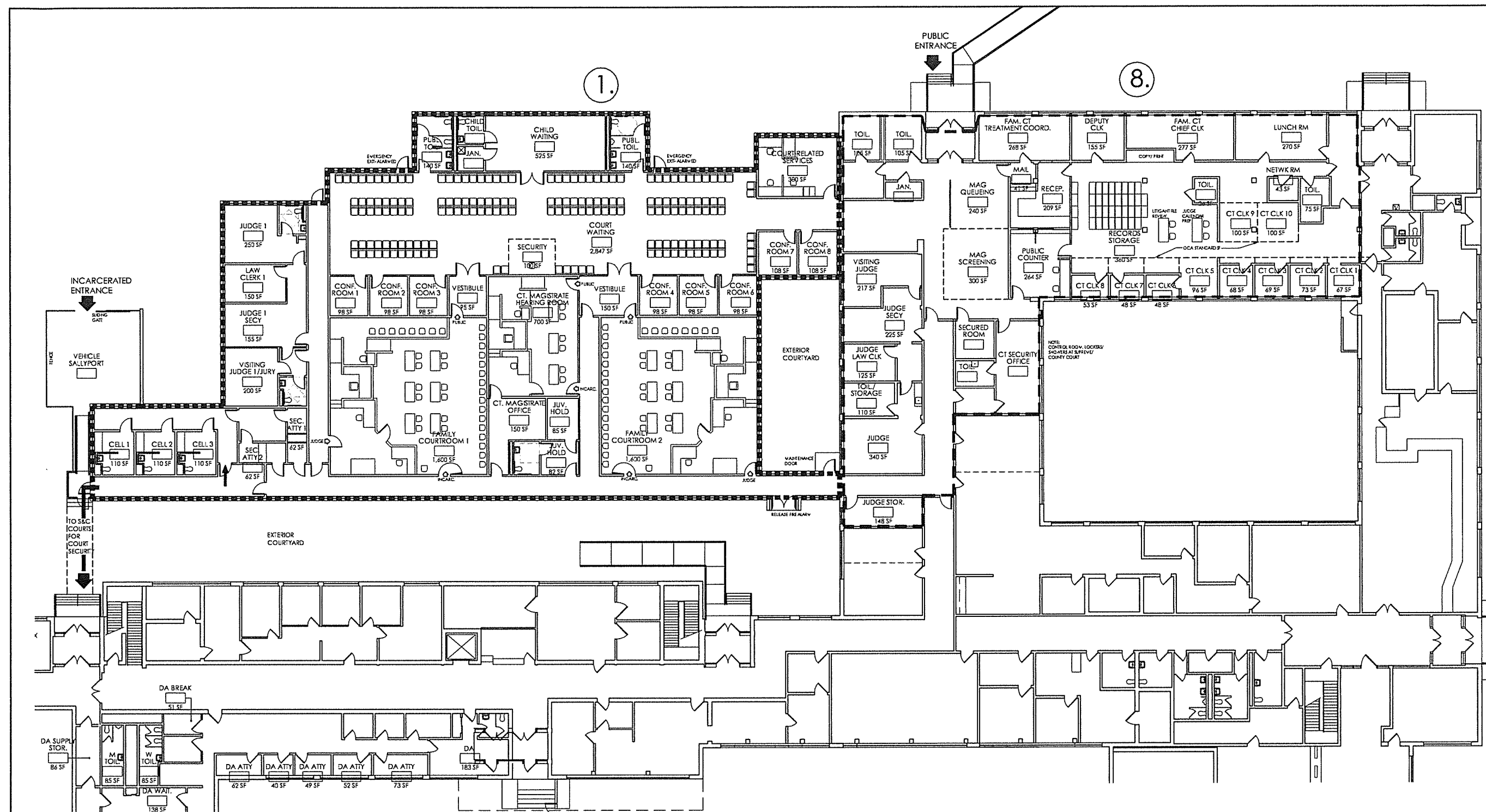
| REVISIONS NO. | DATE | DESCRIPTION |
|---------------|------|-------------|
| | | |
| | | |

**WARREN COUNTY
 MUNICIPAL CENTER
 COURT NEEDS ASSESSMENT**

1340 STATE ROUTE 9
 LAKE GEORGE, NEW YORK 12845

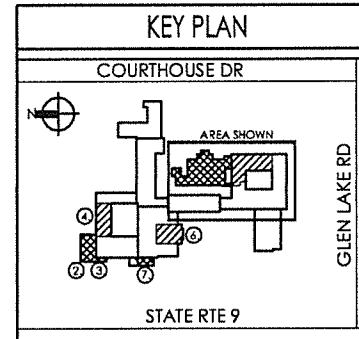
| | | |
|-------------------------|-------|---------|
| DATE | DRAWN | CHECKED |
| 11-6-14 | MM | JN |
| SCALE AS SHOWN | | |
| SHEET TITLE SCHEME 3 | | |
| SF | | |

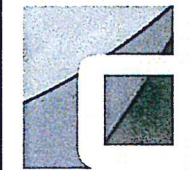
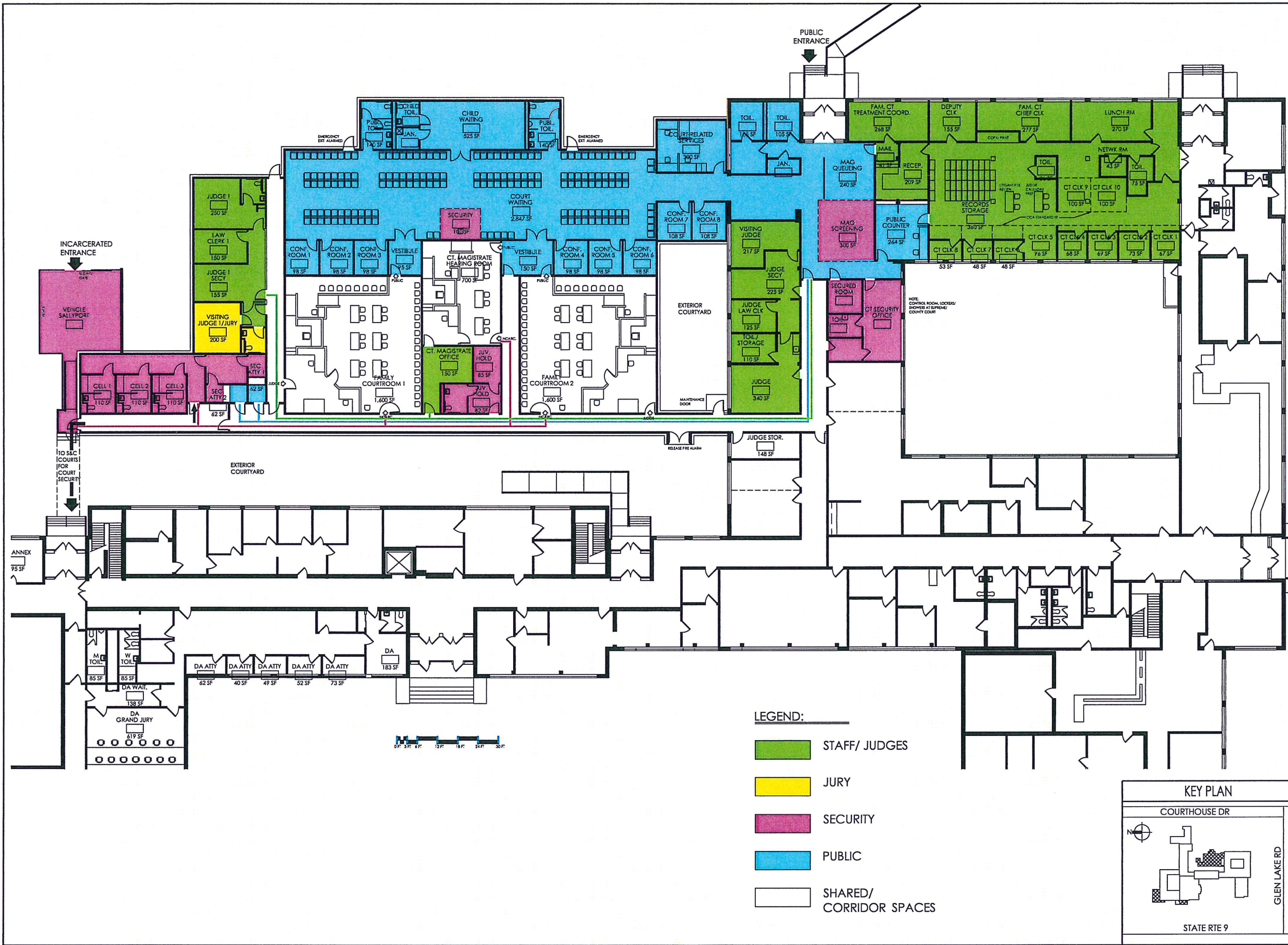
| |
|----------------------------|
| PROJECT NUMBER 13260.00 |
| MC A201-11B |
| DRAWING NUMBER |



| GROSS SF: | |
|---|------------------|
| ADDITIONS: | |
| 1. FAMILY COURT ADDITION (SHOWN): | 11,830 SF |
| 3. SURROGATE VAULT EXTENSION: | 330 SF |
| 2. SUPREME & COUNTY COURT SECURITY ADDITION: | 1,910 SF |
| 2. COMM. OF JURORS AND S&C SCREENING ADDITION (modified): | 1,690 SF |
| 7. COUNTY COURT READY ADDITION: | 1,255 SF |
| (TOTAL ADDITIONS:) | 17,015 SF |
| TOTAL SF: 50,995 SF | |

| GROSS SF: | |
|--|------------------|
| RENOVATIONS: | |
| 8. FAMILY COURT CLERK, FAMILY COURT SCREENING (SHOWN): | 8,010 SF |
| 4. THIRD COURTROOM/ JURY IMPANEL RENOVATION: | 4,720 SF |
| 6. SUPREME/COUNTY/ SURROGATE RENOVATIONS: | 21,250 SF |
| (TOTAL RENOVATIONS:) | 33,980 SF |





CLARK PATTERSON LEE
 DESIGN PROFESSIONALS
 205 ST PAUL STREET, SUITE 500
 ROCHESTER, NEW YORK 14604
 TEL (800) 274-9000
 FAX (585) 454-7818
 www.clarkpatterson.com

| REVISIONS NO. | DATE | BY | DESCRIPTION |
|---------------|------|----|-------------|
| | | | |
| | | | |

| |
|--|
| |
| |
| |

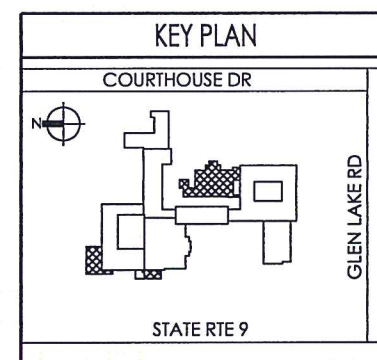
**WARREN COUNTY
 MUNICIPAL CENTER
 COURT NEEDS ASSESSMENT**

1340 STATE ROUTE 9
 LAKE GEORGE, NEW YORK 12845

| | | |
|----------------------|-------|---------|
| DATE | DRAWN | CHECKED |
| 11-6-14 | MM | JN |
| SCALE AS SHOWN | | |
| SHEET TITLE SCHEME 3 | | |

| | |
|----------------|----------------|
| PROJECT NUMBER | 13260.00 |
| MC | A201-9B |
| DRAWING NUMBER | |

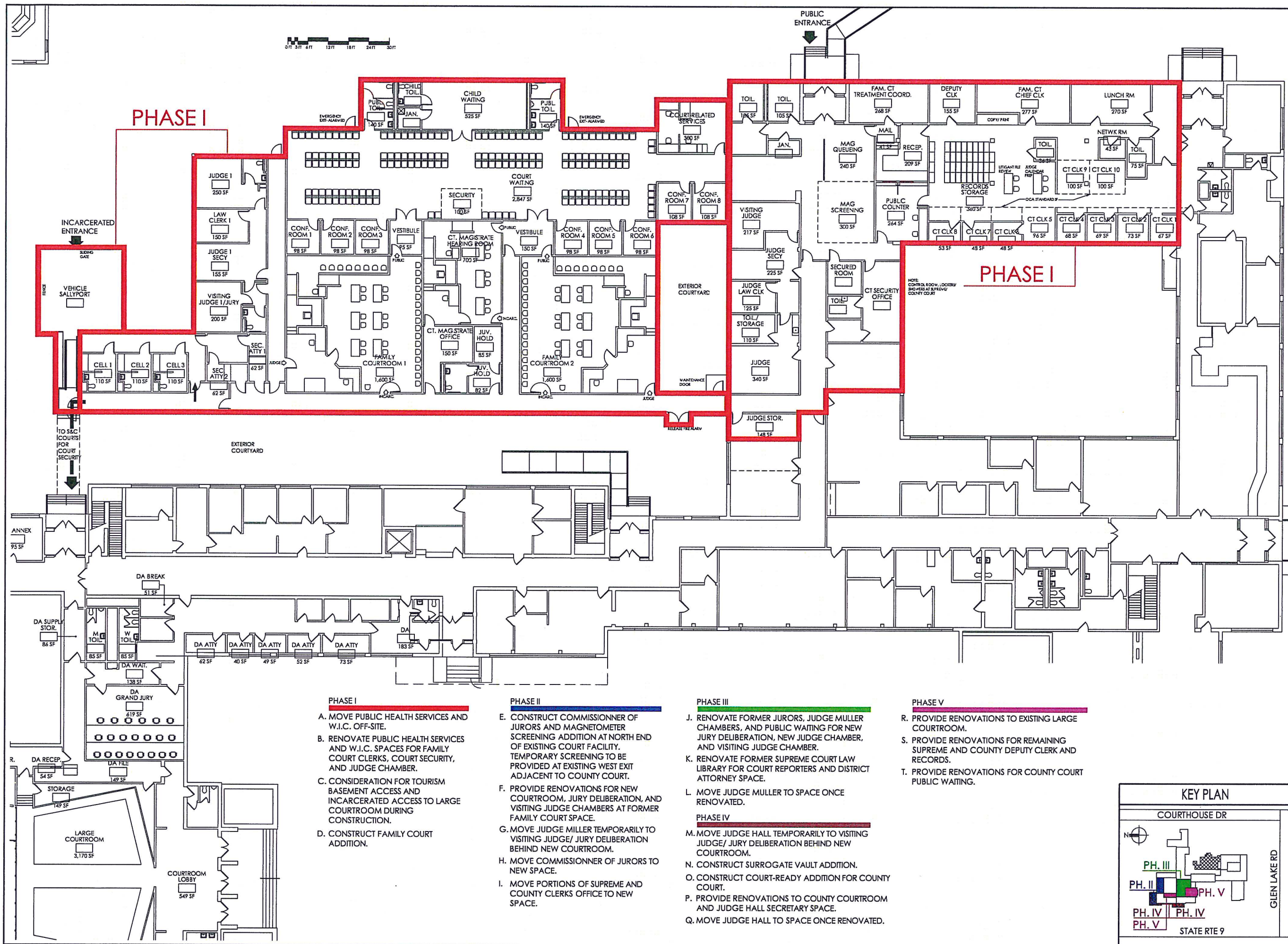
- LEGEND:**
- STAFF/ JUDGES
 - JURY
 - SECURITY
 - PUBLIC
 - SHARED/
CORRIDOR SPACES





PHASE I

PHASE I

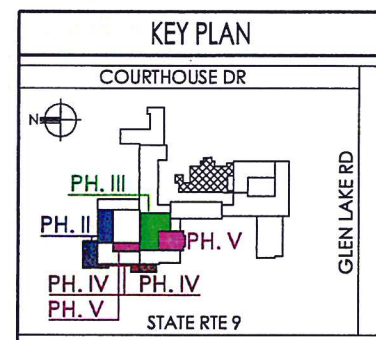


- PHASE I**
- A. MOVE PUBLIC HEALTH SERVICES AND W.I.C. OFF-SITE.
 - B. RENOVATE PUBLIC HEALTH SERVICES AND W.I.C. SPACES FOR FAMILY COURT CLERKS, COURT SECURITY, AND JUDGE CHAMBER.
 - C. CONSIDERATION FOR TOURISM BASEMENT ACCESS AND INCARCERATED ACCESS TO LARGE COURTROOM DURING CONSTRUCTION.
 - D. CONSTRUCT FAMILY COURT ADDITION.

- PHASE II**
- E. CONSTRUCT COMMISSIONER OF JURORS AND MAGNETOMETER SCREENING ADDITION AT NORTH END OF EXISTING COURT FACILITY. TEMPORARY SCREENING TO BE PROVIDED AT EXISTING WEST EXIT ADJACENT TO COUNTY COURT.
 - F. PROVIDE RENOVATIONS FOR NEW COURTROOM, JURY DELIBERATION, AND VISITING JUDGE CHAMBERS AT FORMER FAMILY COURT SPACE.
 - G. MOVE JUDGE MILLER TEMPORARILY TO VISITING JUDGE/ JURY DELIBERATION BEHIND NEW COURTROOM.
 - H. MOVE COMMISSIONER OF JURORS TO NEW SPACE.
 - I. MOVE PORTIONS OF SUPREME AND COUNTY CLERKS OFFICE TO NEW SPACE.

- PHASE III**
- J. RENOVATE FORMER JURORS, JUDGE MULLER CHAMBERS, AND PUBLIC WAITING FOR NEW JURY DELIBERATION, NEW JUDGE CHAMBER, AND VISITING JUDGE CHAMBER.
 - K. RENOVATE FORMER SUPREME COURT LAW LIBRARY FOR COURT REPORTERS AND DISTRICT ATTORNEY SPACE.
 - L. MOVE JUDGE MULLER TO SPACE ONCE RENOVATED.
- PHASE IV**
- M. MOVE JUDGE HALL TEMPORARILY TO VISITING JUDGE/ JURY DELIBERATION BEHIND NEW COURTROOM.
 - N. CONSTRUCT SURROGATE VAULT ADDITION.
 - O. CONSTRUCT COURT-READY ADDITION FOR COUNTY COURT.
 - P. PROVIDE RENOVATIONS TO COUNTY COURTROOM AND JUDGE HALL SECRETARY SPACE.
 - Q. MOVE JUDGE HALL TO SPACE ONCE RENOVATED.

- PHASE V**
- R. PROVIDE RENOVATIONS TO EXISTING LARGE COURTROOM.
 - S. PROVIDE RENOVATIONS FOR REMAINING SUPREME AND COUNTY DEPUTY CLERK AND RECORDS.
 - T. PROVIDE RENOVATIONS FOR COUNTY COURT PUBLIC WAITING.



**CLARK PATTERSON LEE
DESIGN PROFESSIONALS**
205 ST PAUL STREET, SUITE 500
ROCHESTER, NEW YORK 14604
TEL (800) 274-9000
FAX (585) 454-7618
www.clarkpatterson.com

| REVISIONS | NO. | DATE | DESCRIPTION |
|-----------|-----|------|-------------|
| | | | |
| | | | |
| | | | |

**WARREN COUNTY
MUNICIPAL CENTER
COURT NEEDS ASSESSMENT**

1340 STATE ROUTE 9
LAKE GEORGE, NEW YORK 12845

| | | |
|----------------|-------|---------|
| DATE | DRAWN | CHECKED |
| 11-6-14 | MM | JN |
| SCALE AS SHOWN | | |
| SHEET TITLE | | |
| SCHEME 3 | | |
| PHASING | | |

PROJECT NUMBER
13260.00

MC
A201-13B
DRAWING NUMBER