

**Economic Growth & Development**  
**Department of Workforce Development**  
**AGENDA**

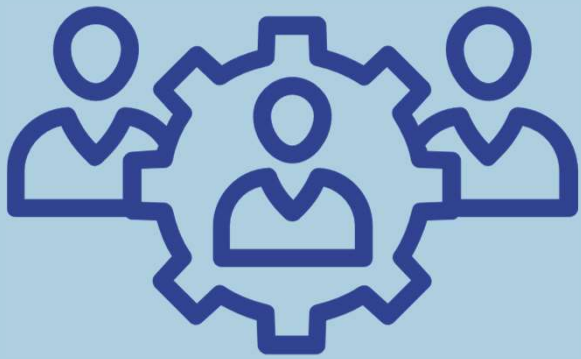
**February 21, 2024**



**Etu**, Strough, Bean, Maday, Turner, Dickinson and Wild

- I. Committee meeting called to order by Chairman**
  - II. Motion to approve minutes of prior Committee meeting**
  - III. Privilege of the Floor and Public**
  - IV. Action Agenda/New Business:**
  - V. Referral/Pending Items**
  - VI. Information for Discussion/Review**
    - 1. General workforce updates
    - 2. Overview of department and 2023 review
  - VII. Privilege of the Floor and Public**
  - VIII. Motion to Adjourn**
- 

**Attachments:**

# Warren County Workforce Development

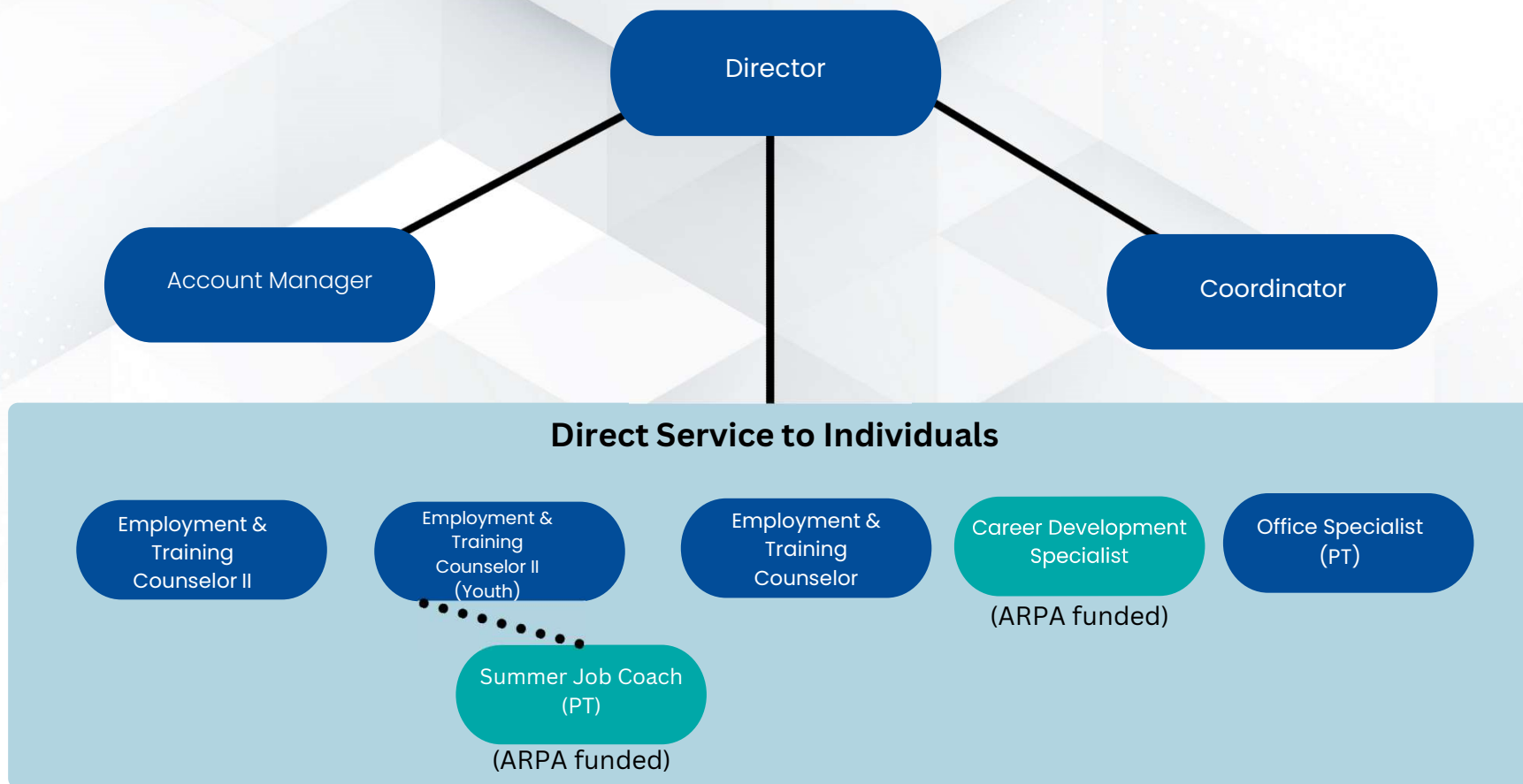


 Warren County Career Center  
333 Glen Street, Suite 300  
Glens Falls  
 [thejoblink.org](http://thejoblink.org)

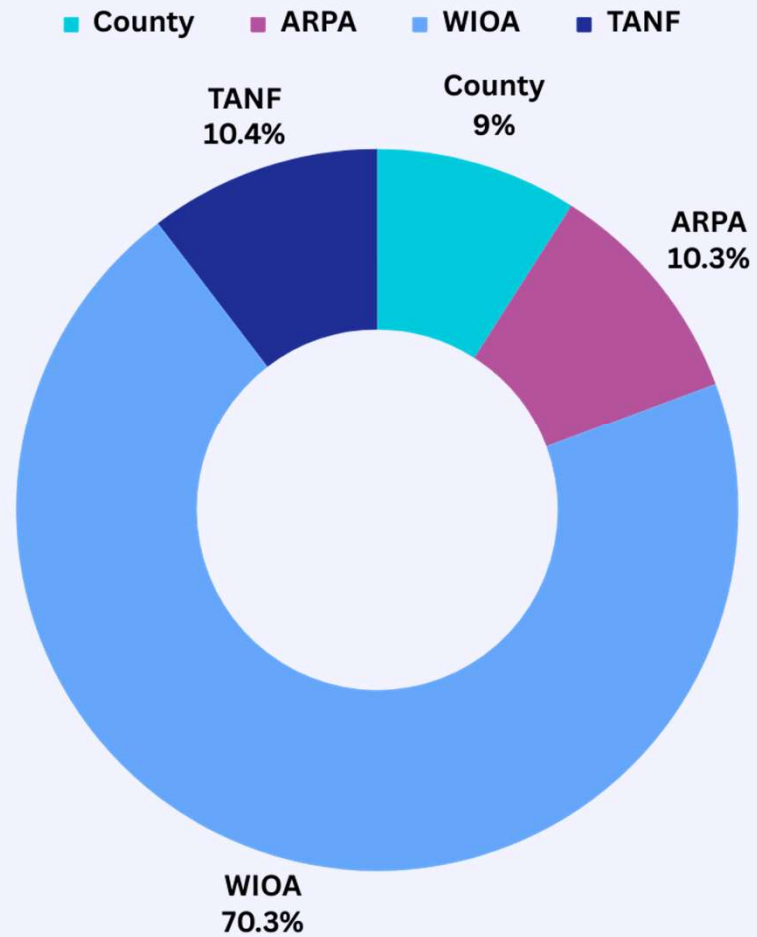
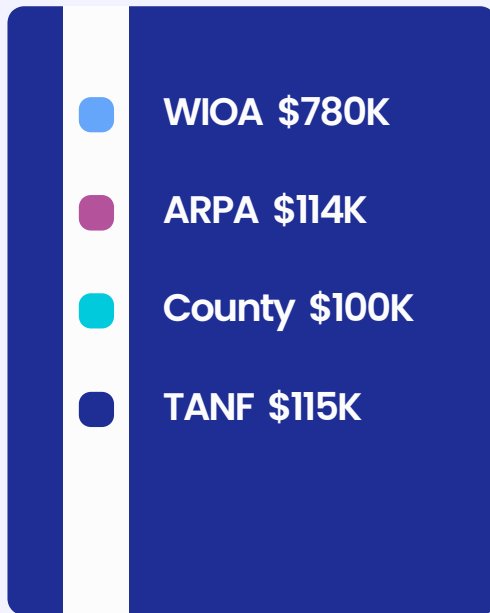
 **americanjobcenter**<sup>®</sup>  
Warren County, NY



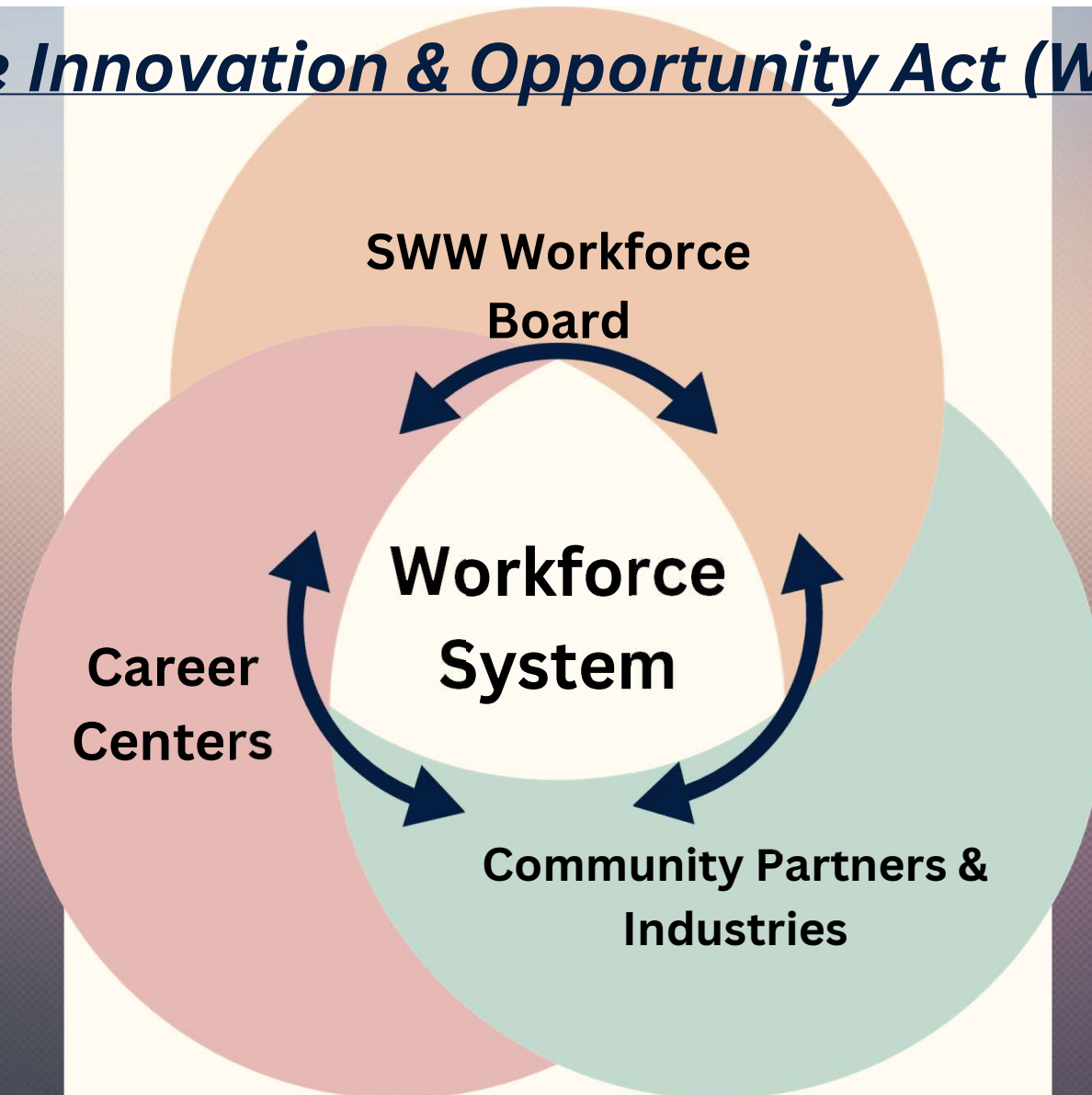
# WARREN COUNTY WORKFORCE DEVELOPMENT



# Workforce Annual Budget



# *Workforce Innovation & Opportunity Act (WIOA), 2014*





**LOW COST & FREE TRAINING AVAILABLE FOR ELIGIBLE APPLICANTS!**

- HVAC-R
- Electrical Technician
- CDL-A/B
- Home Inspection
- Machine Tool Technology
- Asbestos Removal
- OSHA 10, 30, or 40
- Food Service Manager
- CNA
- LPN
- CRPA-P
- EKG
- Dental Assistant
- Phlebotomy
- Food Handler
- And More!

Local certified training partners include: WSWHE, BOCES, SUNY Adirondack, Metrix, and others!

Sponsorship applications are available for Warren County residents at the Warren County Career Center.

333 Glen Street, Suite 300  
 Glens Falls, NY 12801  
 518-743-0925

Open Monday-Friday 8:30am-4:30pm



CDL-A	14
CDL-B	5
Practical Nursing (LPN)	12
CRPA-P	8
Mental Health/Human Services	3
Registered Nurse (RN)	2
Dental Asst.	1
HVAC-R	1
Machine Tool Technology	1
Asbestos Cert.	1
<b>Total</b>	<b>48</b>

## 2023 Training Sponsorships

WIOA	\$58,495
Warren County	\$47,969
ARPA	\$15,809
<b>Total</b>	<b>\$122,273</b>

**\*\*11 CDL sponsorships were for municipal workers and another for Bolton School District**

### Supportive Services:

Work Boots:	3
DOT Med Cert:	1
Transportation:	17
<b>Total</b>	<b>21</b>

# Greater Capital Region Career Centers February 2024 Virtual Workshops

	Monday	Tuesday	Wednesday	Thursday	Friday
1-2				11am <u>Transferable Skills</u> <sup>1</sup>	
5-9					
12-16		10:30am <sup>13</sup> <u>Interview Preparation</u>	10am <sup>14</sup> <u>Goal Setting</u>	11am <sup>15</sup> <u>Completing Job Apps</u>	10:30am <sup>16</sup> <u>Networking</u>
19-23			10am <sup>21</sup> <u>Resume Development</u>	1:30pm <sup>22</sup> <u>Social Media</u>	
26-29		11am <sup>27</sup> <u>Overcoming Barriers</u>			

## 2023 Workshop Attendance

Transferable Skills	269
Resume Development	313
Interview Preparation	240
Goal Setting	247
Completing Job Apps	316
Overcoming Barriers	296
Social Media	240
<b>Total</b>	<b>1921</b>

Presented by the Greater Capital Region Career Centers










# Warren County Labor Statistics

	Total Labor Force	Employed	Unemployed	Unemployment Rate
August 2019	33,600	32,400	1,200	3.6%
December 2019	31,300	29,600	1,700	5.4%
April 2020	31,000	25,100	6,000	19.2%
August 2020	32,600	30,600	2,000	6.3%
December 2020	30,600	28,700	1,900	6.1%
August 2023	33,200	32,200	1,000	3%
December 2023	31,400	30,000	1,500	4.6%

Source: NYS Department of Labor





# Summer Youth Employment Program (SYEP)

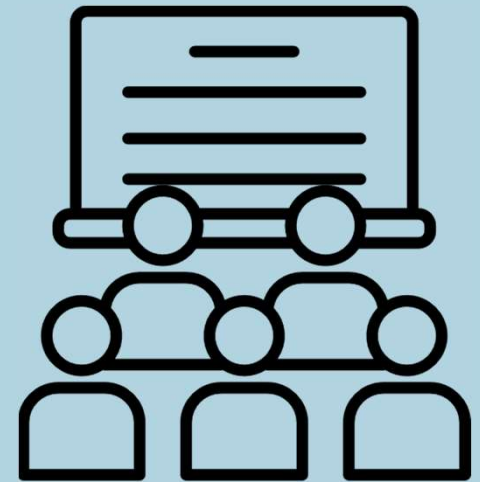
27 youth  
8 zip codes  
18  
worksites



537 summer lunches served in  
Operation Food Chain!

# Youth GED Class

Full at 12 students  
3 graduates in 2023  
Ongoing Wait List



## Additional Youth Programming

- Y-Reconnects Worksite Mentoring Program: 2 cohorts per year and up to 10 hours per week
- Year-Round Work Experience provided more long-term placements
- Virtual reality job exposure
- HS job fairs



# Additional Successes

- Technology upgrades and access for the public
- Pathways class with DSS
- Doubling budget
- Increased staffing
- Community partnerships with schools, agencies, and businesses
- Chamber events to engage business community
- Fiscal audits always positive
- Workforce celebrations
- Traditions, recognitions, and annual retreats
- Supporting WC government workforce
- Updated center decor



# Challenges

- **Greatest barriers to employment: housing, transportation, child care, mental health, criminal records, skill deficits, demographics, technology gaps**
- **Vulnerable populations: veterans, seniors, youth, justice-involved, in recovery from addiction, people with disabilities: each have own challenges**
- **Retention and workplace culture**
- **School resources & training capacities**
- **Gov bureaucracy and program audits**
- **Grant restrictions**
- **Different fiscal years**

